

November 14, 2009-January 24, 2010

Crayola Gallery

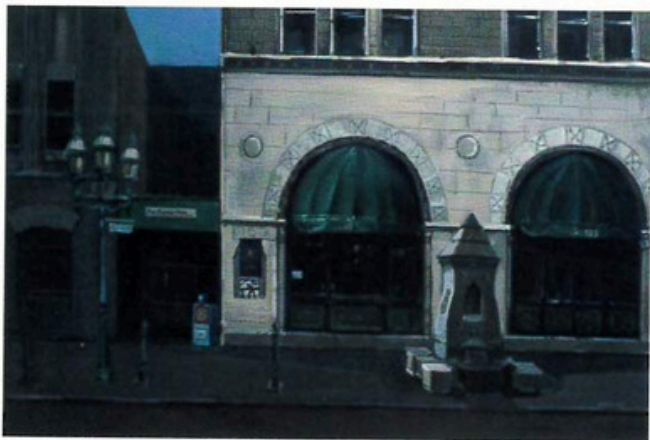
Banana Factory

25 W. Third St.

Bethlehem, PA

ARTISTS' ANNUAL EXHIBITION

**BANANA
FACTORY**



BEN MARCUNE STUDIO 350
Main Street, Bethlehem, Oil on Canvas



BRUCE WARD STUDIO 249
Ready to Take Flight, Photograph



BERRISFORD BOOTHE STUDIO 343
To Understand This Is To See Beyond Its Form,
Paper, Tape and Mixed Media on Panel



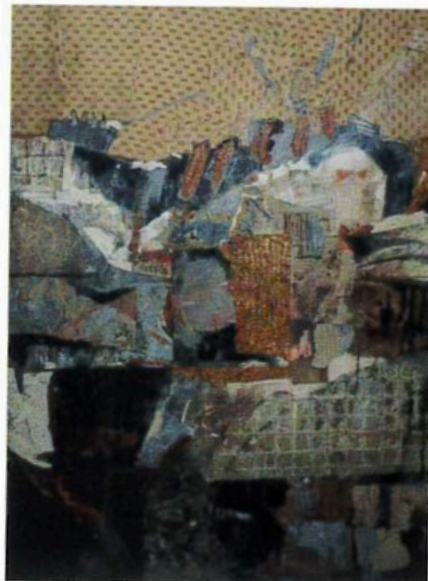
DEBORAH SLAHTA STUDIO 247
Untitled, Raku Fired Clay



DENNIS GARDNER GLASSWORKS STUDIO
Untitled, Blown Glass,
Acrylic Plastic, Epoxy Resin



DOUG WILTRAUT STUDIO 248
Sweet Seventy, Watercolor



GINI ILLICK STUDIO 250
Earth Works, Mixed Media



HEATHER SINCAVAGE STUDIO 342
Beside Herself, Mixed Media



HOLLY FIELDS-SCOTT STUDIO 346
*Donna Arabella & Donna Necia,
Buon Fresco Portrait Panel*



JAMES HARMON STUDIO 345
Painted Urn, Painted and Blown Glass



JOHN CHOI GLASSWORKS STUDIO
*Crows and Leopard, Hot Sculpted and
Blown Glass*



ADRIANO FARINELLA STUDIO 218A
Remember This Moment, Oil on Canvas



ANDREW KISH III STUDIO 248A
Secret Affair, Watercolor



ANGIE SNYDER-LANDE STUDIO 255
Shackleford Banks, Oil on Canvas



ANN ELIZABETH SCHLEGEL STUDIO 243
Bethlehem Steel, Oil on Canvas



MARLENE "LINNY" FOWLER/
OCTAVIO PEÑA STUDIO 330
Untitled, Stained Glass



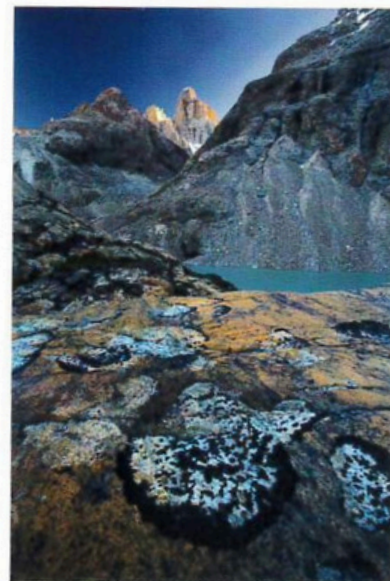
OLAF STARORYPINSKI STUDIO 233
heidi, the day after #58, Black & White Photography



NESSA GRAINGER STUDIO 347
Fashion Plate, Acrylic Wash and Collage



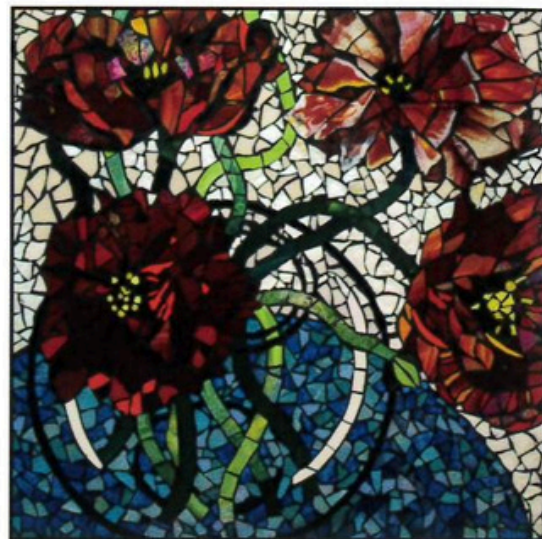
PRISCILLA TAYLOR
ROSENBERGER STUDIO 253
Southwest Afternoon, Oil on Canvas



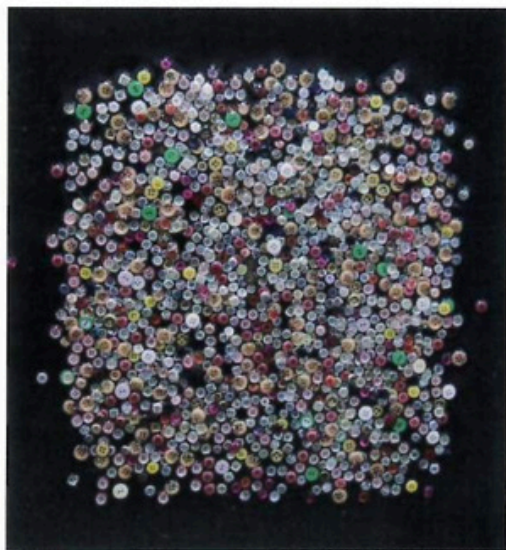
RICHARD HOLT STUDIO 338
Mount Fitzroy, Photograph



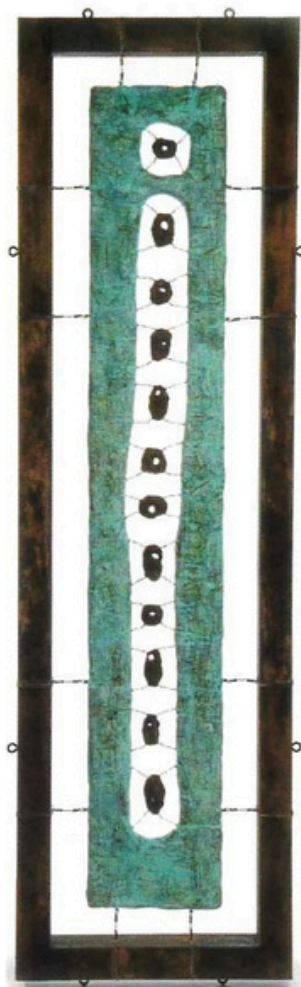
KAREN STEEN STUDIO 254
Garden Whimsy II, Paper, Wood and Plexiglas



KIM HOGAN STUDIO 249
Red Poppies in a Clear Vase, Glass Mosaic



LARA BLY-ALLAIK STUDIO 337
The Garden, Mixed Media



KHALIL ALLAIK STUDIO 337
The Aurora, Mixed Media



LIZ MAGNO STUDIO 218
Carpathian Sybil, Plaster, Mixed Media

TRANSFORMATION

To change something dramatically or to convert something to different energy. A variance from routine, a fresh set of something.

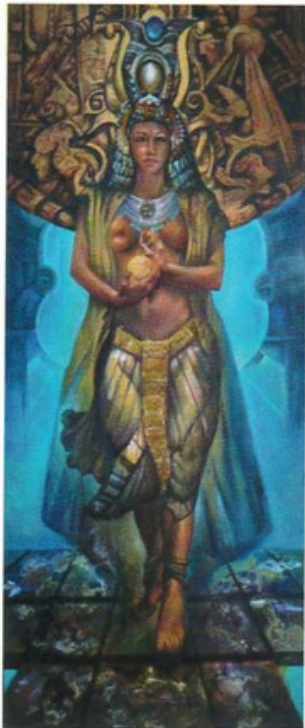
Life is forever changing and we are transformed by change. As artists we embrace this transformation as it brings about new ways of seeing, creating and being. This year we welcomed two new artists to the Banana Factory. When we bring new artists into the group, the dynamics change and there is a shift, a paradigm, an adventure. We greet change with open arms. Without change art stagnates and becomes mundane. Viva la change! We welcome Virginia Abbott and Holly Fields-Scott to the Banana Factory as resident artists. We look forward to their creative contributions to our arts organization, and we look forward to how their art and their spirit transform the Banana Factory.

Virginia Abbott is an award-winning sculptor on a serious green mission. In addition to working in bronze, she works with recycled egg cartons to create personal work as well as works for exhibition. The intricacies of the medium are remarkable, and when patina is applied you would be hard pressed to tell the difference unless you pick it up. Virginia is a member of the National Sculpture Society, where she earned numerous honors for her work such as the Gloria Medal and The Ben Franklin Award, and she has captured the prestigious Malvina Hoffman bronze horses head award from the Catherine Lorillard Wolfe Art Club in New York City.

Holly Fields-Scott's passion lies in art, architectural restoration and theater design. Holly's studies have taken her to Il Laboratorio Per Affresco in Italy and the School of Realist Art in Seattle. She has devoted the last 20 years to making her passion for art her livelihood.

Holly is co-owner of Bella Pintura Inc., a design studio that works closely with clients to create beautiful architectural surface treatments, frescoes and murals. Her clients have included Shania Twain, Siegfried and Roy, Mandalay Development and the Shell Group. In addition to high profile commissions, she paints the most unique and whimsical animal portraits.

Janice Lipzin
Director of Visual Arts and Education
ArtsQuest



RIGO PERALTA STUDIO 340
La Luz en Las Manos de Cleopatra, Oil on Linen



VALERIE BREAUX HAAF STUDIO 351
Amazon Shield, Handmade Paper and Copper



SCOTT ATIYEH STUDIO 242
Blue Gobbler, Clay, Glaze and Horse Hair



VIRGINIA ABBOTT STUDIO 245
Radiance, It's a Beautiful Light, Cast Paper

BANANA FACTORY

25 W. Third St.
 Bethlehem, PA 18015
 610-332-1300
www.bananafactory.org

2009 Crayola Gallery
 shows underwritten by:

CORNER
 STONE 

2009 Banko Family Gallery
 shows underwritten by:

*Service*MASTER
 Clean

by Round the Clock Cleaning

2009 Gallery
 Media Sponsor:

THE MORNING CALL
the.morning.call.com

Banana Factory mission:
*"To kindle, support and
 celebrate the artistic, cultural
 and creative spirit of the
 Lehigh Valley"*

Gallery exhibitions made
 possible by support from
 Christkindlmarkt Bethlehem
 and the Pennsylvania
 Council on the Arts.



Design: Angel Gable