



OFFICIAL PROGRAM
25c

BETHLEHEM BULLDOGS

VS.

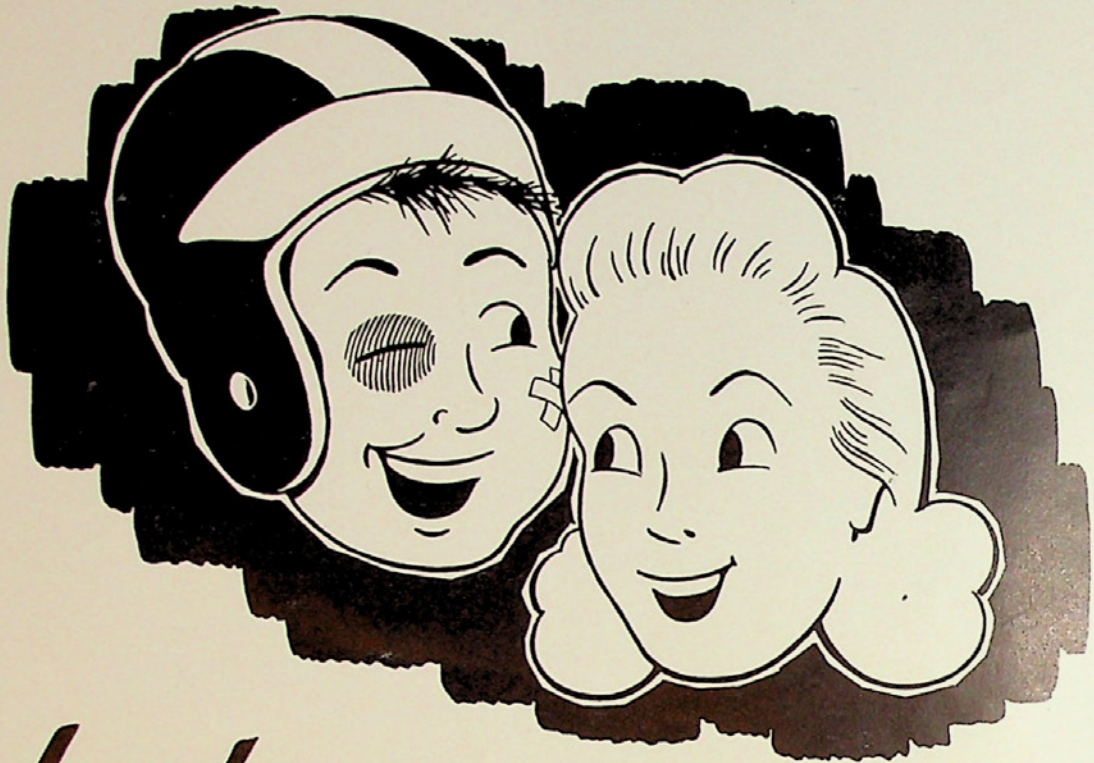
HAWAIIAN WARRIORS

COMING ATTRACTION

Bethlehem Bulldogs vs. Jersey City Giants
Wednesday, September 14

LIBERTY HIGH SCHOOL STADIUM
SATURDAY, SEPT. 10, 1949

JOHN KRAMER



but...TENDER

A & B *Skinless*
FRANKFURTERS

These are the only Frankfurters made
in Allentown which are inspected and
passed by the U. S. Government.

U. S. Govt. Est. 289

CONTENTS

Lucky Number "A" ..	2
Bulldog Players	3
Bulldog Roster	4
Lucky Number "B" ..	5
Visiting Players.....	7
Starting Lineups	8
Squad Lists.....	9
Bulldog Players	10
Bulldog Coaches.....	11
Penalties.....	11
Lucky Number "C" ..	12
Visitors' Roster.....	13
"In and Out of the Huddle".....	14
Referee Signals.....	16
Lucky Number "D" ..	17



Liberty High School Stadium

THE BULLDOG GRIDDER

Official Publication
BETHLEHEM BULLDOGS

Member
AMERICAN FOOTBALL LEAGUE

ADMINISTRATIVE STAFF

Al Ennis.....	General Manager	Dr. A. R. Zack.....	Team Physician
Henry F. Check.....	Ticket Manager	Lester Jones.....	Team Trainer
J. Birney Crum.....	Coach	Warren Getter.....	Equipment Manager
Leo F. Prendergast.....	Coach	Robert Conover.....	Statistician
Charles E. Gauer, Jr.....	Coach	Phil Phillippi.....	Stadium Operations

HEADQUARTERS

BETHLEHEM BULLDOGS - - LEWIS AND ROGERS STREETS

P. O. Box 1273

Phone 6-8302

BETHLEHEM, PENNSYLVANIA

Team Colors: Green and Silver, Red

In Midtown Allentown . . .

. . . at 726 Hamilton Street

BETZ

RESTAURANT

— NEVER CLOSED —

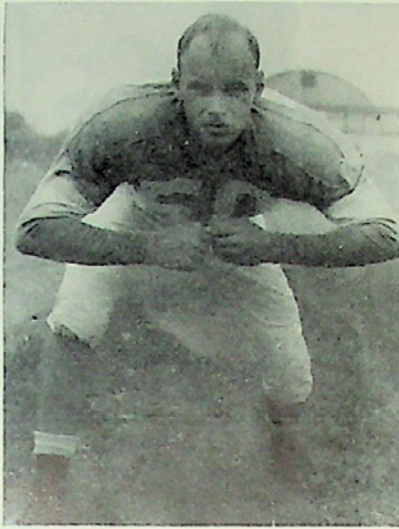
A Complete Menu to Suit . . .

. . . Every Taste

. . . Every Pocketbook

LUCKY NUMBER

A N^o 9733



BUD SVENDSEN
Center

Bud Svendsen, pivot man of the Bethlehem Bulldogs' line, has a wealth of football experience behind him, although only 34 years old. A first stringer on Bernie Bierman's championship University of Minnesota teams in 1934, 1935 and 1936, he was signed by the Green Bay Packers upon graduation, and was first string center for them in 1937, 1938, and 1939. In 1940 and 1941 he played under Jock Sutherland with the Brooklyn Dodgers of the National Football League. In 1942 he took over the coaching chores at Connecticut University but his college season ending early, he came back to the Dodgers.

In 1943 he enlisted in the U. S. Navy. In 1946, 1947 and 1948 he was Head Football Coach at Hamilton College in Clinton, N. Y.

This year he came to Lafayette College in Easton, Pa. as Line Coach under Clipper Smith.

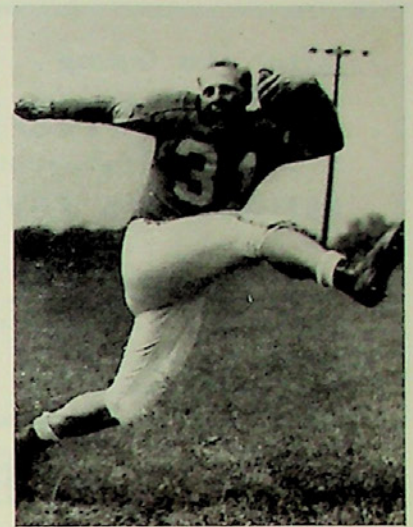


ERNIE PARKS
Halfback

This giant negro ball totter comes to the Bethlehem Bulldogs with a brilliant record of gridiron performances with McKinley High School in Canton, Ohio, and Ohio State University.

Standing 6 feet 3 inches and balancing the scales at 235 pounds, Parks has the speed of a sprinter. As a matter of fact, he competed in the sprints at high school and college, and was State Champion at the 100 yard and 220 yard dashes. He negotiated the "century" in 9.8 seconds, and was clocked for the 220 in 21.4 seconds.

He also participated in basketball, both in college and as a semi-pro. Despite his great height and weight, Parks is as shifty on the gridiron as a lightweight. He is equally adept at battering his way through opposing lines or threading his way through a broken field.



HARLAN DEDRICK
Fullback

This handsome blond young Californian makes his professional debut this year with the Bethlehem Bulldogs of the American Football League.

He starred at Glendale (California) Junior College under the coaching of former Chicago Bears center Forrest MacPherson. Naturally he's a "T" formation specialist, being recommended to the Bulldogs as "a superior blocker and tackler . . . a fast, powerful runner and a good pass receiver". He can also handle the ball under the center if the occasion demands.

Like most of the 1949 Bulldogs, Dedrick is young, being only 23 years of age. He stands six feet one and a half inches, and weighs 214 pounds. He is married and has a six months old son.

Follow the BULLDOGS -- Follow BETHLEHEM HI

Form a Party
and
Charter a



SAFE!!!!
SWIFT!!!!
SMOOTH!!!
ECONOMICAL

TRI CITY COACH LINE

734 High Street - Bethlehem, Pa.

Phone 8-2021

Ideal Transportation: to the Games...for Picnics...for Scenic Tours...for Deep Sea Fishing

LEROY J. MILLER, Owner

After the Game . . . VISIT

The CANDLELIGHT ROOM

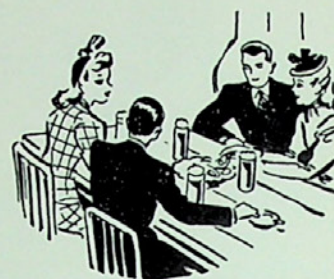
☆ Delightful ☆ Relaxing ☆
 BETHLEHEM'S FAVORITE COCKTAIL LOUNGE
 at the

HOTEL BETHLEHEM

(Direction: American Hotels Corporation)

J. LESLIE KINCAID, Pres.
 CHARLES F. KNAPP, Gen. Mgr.

Jess Flaherty and His Hammond Organ



Bethlehem Bulldogs' Roster

No.	Player	Pos.	Age	Hgt.	Wgt.	College
70	BAILEY, JIM	RT	22	6-03	225	West Va. State Univ.
12	BERRY, ARTHUR	LHB	22	5-10	205	Morgan State
30	BONFORTE, LEONARD	LHB	26	5-10	163	Georgetown
21	CASCIANO, MATT	FB	20	5-07	186	Bangor (Pa.) H.S.
11	DANCEWICZ, BOLEY	QB	24	5-10	195	Notre Dame
31	DEDRICK, HARLAN	FB	23	6-01½	214	Glendale (Calif.) Jr. Coll.
10	DINI, RAYMOND	QB	22	6-00	200	Allentown (Pa.) H.S.
71	DI VIETRO, NICK	LT	22	5-10	215	Easton (Pa.) H.S.
53	GAWRYS, RAUL	C	23	6-03	214	Edison Park HS (Chicago)
75	GEOSITS, JOHN	LG	27	6-01	220	Bucknell
33	GHAUL, HARRY	FB	28	6-00	212	Univ. of Miami (Florida)
60	GUTHRIE, TOM	LE	22	6-04	230	Notre Dame—Harvard
22	HOCHHEISER, MORT	C	25	6-02	210	Temple
44	KLINE, WILLIAM	LHB	23	5-10	175	Villanova
51	LILIENTHAL, BILL	RT	25	6-02½	220	Villanova
84	LOGEL, BOB	RE	22	6-04	215	El Toro Marines
41	MICHAELS, JOHN	RT	23	6-02	200	Univ. of Delaware
40	NOJUNAS, AL	RHB	24	5-11½	190	Temple
63	O'CONNOR, WILLIAM	RG	23	5-11	220	Notre Dame
32	PARKS, ERNIE	RHB	23	6-03	235	Ohio State
62	PEREZ, PETE	RG	23	5-10	222	Illinois
42	PETRELLA, JOHN	RHB	26	5-08	190	Penn State
80	PETRO, JOE	LG	29	6-01	195	Muhlenberg
81	REINHART, CLAUDE	RG	20	6-02	227	Pottstown (Pa.) H.S.
61	RESETAR, EDWARD	LG	26	5-11½	222	Kansas State
20	ROSENTHAL, JACK	LE	25	5-10	185	Pennsylvania
43	RUMAN, BERNIE	FB	25	5-11½	196	Arizona
65	SCHLEICHER, ROY	LE	24	6-01	220	Villanova
83	SCOTT, PERRY	RE	28	6-03	210	Muhlenberg
23	STANCZAK, FRANK	QB	25	5-10	185	Lafayette
72	SUKEENA, PETE	RT	25	6-00	215	Allentown (Pa.) H.S.
50	SVENDSEN, BUD	C	34	6-01	195	Minnesota
64	TERRY, GEORGE	LT	24	5-10	245	College of Pacific
82	WARDENSKI, JOE	LT	23	6-04½	262	Liberty H.S.

For the largest
 most varied
 selection of Pipes
 fine Tobaccos
 in the Valley

The

Smoke Shop



at 957 Hamilton Street

Allentown, Pa.

GEORGE'S

7 WEST BROAD STREET
BETHLEHEM, PA.

“WHERE QUALITY MERCHANDISE
CARRIES
A MONEY BACK GUARANTEE”



Featuring:

ADAM HATS
BOTANY NECKWEAR
PHOENIX HOSIERY
RUGBY SPORTSWEAR
SWANK JEWELRY
VAN-HEUSEN SHIRTS

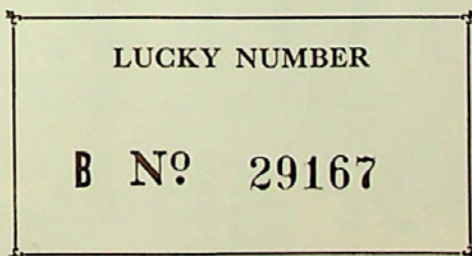
GEORGE'S MEN'S SHOP

7 WEST BROAD STREET

PHONE 6-2432

Summer-Winter Air Conditioning

●
1st Award
Tickets to
Bulldogs Next
Home Game
●



●
2nd Award
an
Adam Hat
●

Open Thursday Evenings

LET
Mowrer
BE
**YOUR
MILKMAN**

Mowrer's

Golden Guernsey
MILK

IT'S VITAMIN "D" HOMOGENIZED

Drink It For Health

FOR DELIVERY
DIAL 7-5804

The Hawaiian Warriors

Out of the Golden Isles of the mid-Pacific comes a football team that is truly representative of the Islands. Representing the City of Honolulu and the Territory of Hawaii, the Hawaiian Warriors is a community owned team and manned by players whose ancestry fans to all quarters of the eastern Pacific, and a European blending typical also of the New World.

Hawaii, Korea, Japan and China are represented in the oriental blood of the Warriors. Forefathers from Europe were native to Switzerland, Portugal, Italy, Sweden, Poland, Spain and Norway.

The opponents of the Bulldogs this evening were organized in 1946 and immediately were entered into the Pacific Coast Football League. In their first year, they were runners-up to the league championship. In 1947 they coralled the flag and repeated as league champions last year.

The Hawaiians home field is the Honolulu stadium, with a seating capacity of 26,000. At home and away, their game added attractions instead of the band—majorette routine familiar to American gridirons, is comprised of antics associated around the world solely with the Hawaiian Islands. In addition to a hula routine by the Hawaiian members of the squad, several of its members doff shoes and put on a "barefoot" kicking exhibition that even curls the toes of the spectators.

A look at the record books of major and minor league football finds that the Warriors have origin-

ated entries in both. Professional football as a whole includes the record for the most points scored in a single game. In 1948 against the Hollywood Bears, they amassed 75 points while the denizens of the Movie Capitol counted 21. In that same game, another record was established when Bill "The Knee" Acheco booted 8 consecutive points after touchdowns in one half.

Minor professional football league records established by the Warriors are: Buddy Abreu's 84 points in 9 games; and an attendance record set when the Los Angeles Bulldogs came to town on December 7, 1947. 26,833 saw the game.

The Pacific Coast record book contains all the foregoing plus Alvin Chang's passing performance in 1948. 67 completions out of 110 tries. His yardage gained in the process also set another high mark. It totalled 1012 yards. In the Punting department, Johnny "Kailua" Wright, Warrior end, averaged 42 yards over a ten game schedule.

Warriors Staff

President	-	-	-	BEN DILLINGHAM
Secretary	-	-	-	ROBERT RATH
Equipment Manager	-	-	-	ERNEST LEMELLE
Trainer	-	-	-	MONA WILLIAMS
Head Coach and General Manager—				F. J. "Bruck" Brickner.
Assistant Coach—				Frank Trigilio.

Satisfying Pleasure...

Stegmaier's
GOLD MEDAL
BEER
BREWED TO THE TASTE OF THE NATION

STEGMAIER BREWING COMPANY, WILKES-BARRE, PENNA.

After the Game Stop for a Stegmaier's

HAWAIIAN WARRIORS

55 Guerrero, le	77 Han, lhb	90 Lam Ho, fb
58 Wright, le	80 Hulihee, rhb	93 Cabral, rt
63 Joao, qb	83 Kang, rg	94 Anderson, lg
67 Neves, lhb	84 Kalaau, le	95 Kealoha, c
68 DeRego, rhb	85 Castro, qb	96 Ruiz, lg
69 Nelson, re	86 Ackerman, re	97 Malama, lt
70 Chang, qb	87 Collins, re	98 Watasaki, rt
72 Yonamine, rhb	88 Trigilio, fb	99 Shibuya, c
74 Abreu, lhb	89 Apau, lt	

BETHLEHEM BULLDOGS

10 Dini, qb	40 Nojunas, rhb	64 Terry, lt
11 Dancewicz, qb	41 Michaels, rt	65 Schleicher, le
12 Berry, lhb	42 Petrella, rhb	70 Bailey, rt
20 Rosenthal, le	43 Ruman, fb	71 Di Vietro, lt
21 Casciano, fb	44 Kline, lhb	72 Sukeena, rt
22 Hochheiser, c	50 Svendsen, c	75 Geosits, lg
23 Stanczak, qb	51 Lilienthal, rt	80 Petro, lg
30 Bonforte, lhb	53 Gawrys, c	81 Reinhart, rg
31 Dedrick, fb	60 Guthrie, le	82 Wardenski, lt
32 Parks, rhb	61 Resetar, lg	83 Scott, re
33 Ghaul, fb	62 Perez, rg	84 Logel, re
	63 O'Conner, rg	

CHESTERFIELD
RADIO AND TELEVISION

"Smoke Out"
Always Buy



A

**ARTHUR
GODFREY**



ARTHUR GODFREY—Next-door neighbor
to 90 million people! You look at him—
listen to him—laugh with him and love him!

ALL CBS RADIO AND TELEVISION STATIONS

MILDER CHESTERFIELD

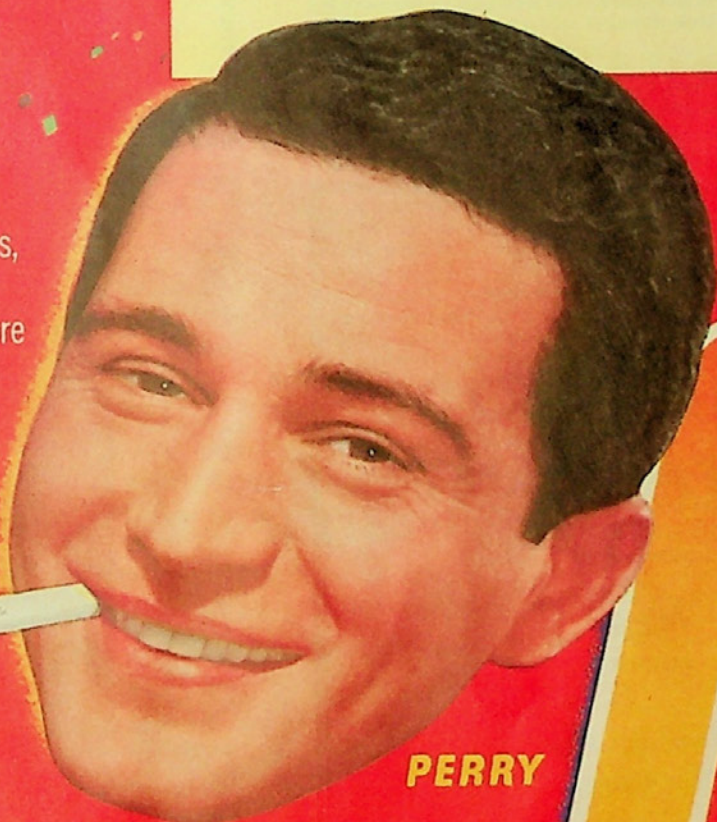
D'S BIG THREE
VISION STARS SAY...

R cigarette
"Chesterfield"

BING
CROSBY

BING CROSBY — Through his records, movies, and his radio programs, he has brought more pleasure to more people than any other living man.

ALL CBS RADIO STATIONS



PERRY

PERRY COMO — Now in his seventh year as Chesterfield's great radio and recording star. Today, millions acclaim him as television's greatest singing star.

ALL NBC RADIO AND TELEVISION STATIONS

COMO

HAWAIIANS

BETHLEHEM

84 Kakaau; 55 Guerrero; 58 Wright	L E R	83 Scott; 84 Logel
89 Apu; 97 Malama	L T R	41 Michaels; 70 Bailey; 72 Sukeena; 51 Lilienthal
94 Anderson; 96 Ruiz	L G R	62 Perez; 63 O'Connor; 81 Reinhart
95 Kealoha; 99 Shibuya	C	22 Hockheiser; 50 Svendsen; 53 Gawrys
83 Kang	R G L	61 Resetar; 75 Geosits; 80 Petro
93 Cabral; 98 Watasaki	R T L	64 Terry; 71 DiVietro; 82 Wardenski
87 Collins; 86 Ackerman; 69 Nelson	R E L	20 Rosenthal; 60 Guthrie; 65 Schleicher
85 Castro; 63 Joao; 70 Chang	Q	10 Dini; 11 Dancewicz 23 Stanczak
74 Abreu; 77 Han; 67 Neves	L H R	32 Parks; 40 Nojunas; 42 Petrella
72 Yonamine; 80 Hulihee 68 DeRego	R H L	12 Berry; 30 Bonforte; 44 Kline
90 Ho; 88 Trigilio	F	21 Casciano; 31 Dedrick; 33 Ghaul; 43 Ruman

D Largest selling cigarette in America's Colleges
(BY LATEST NATIONAL SURVEY)



ARTHUR BERRY
Halfback

This talented negro ball-toter comes to the Bethlehem Bulldogs highly recommended by college coaches who have seen him in action as a member of the Morgan State varsity eleven.

Berry, a native of Caldwell, New Jersey, stands five feet ten inches in height, and tips the scales at 205 pounds. In pre-season workouts, he has more than lived up to his advance notices, and the Bulldog coaches are predicting a brilliant pro career for him.

A hard-running, hard-hitting back, he can be used for those quick openers through the line, and his great speed afoot and his shiftiness tab him as a leather-lugger who can go all the way if given half a chance.

OLYMPIC

Athletic Equipment Reconditioners

E. Stroudsburg, Pennsylvania

★

Telephone
Stroudsburg
1200



★

Marty Baldwin,
Manager



**YOU LIKE IT
IT LIKES YOU**

The Place to Go . . .

PURE FOOD RESTAURANT

APPROVED



RESTAURANT

Bethlehem's Newest and Largest Restaurant

With Air Conditioning at All Times



11-13 WEST BROAD STREET

PHONE 7-4211



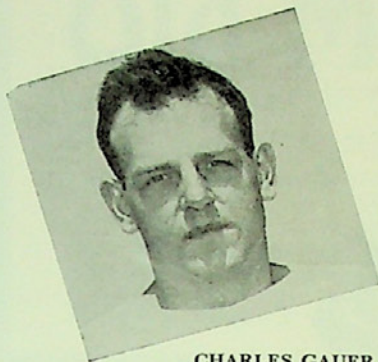
HARRY GHAUL
Halfback

The acquisition of Harry Ghaul, husky 212 pound half-back, assures the Bulldogs of a talented and experienced punter, as well as a rugged, heavy duty running back.

The 28 year old Ghaul has long been regarded as one of the game's great booters. He led the nation's collegiate toe artists while a member of the University of Miami (Florida) eleven, and played with the Sunshine State's aggregation in two Orange Bowl contests, in both of which his powerful kicking was a potent factor in his team's triumphs.

Ghaul will take over the extra point and field goal kicking chores for the Bulldogs as well as the punting.

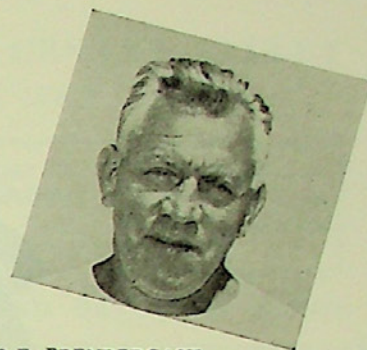
THE BULLDOG COACHES



CHARLES GAUER, JR.



J. BIRNEY CRUM



LEO F. PRENDERGAST

It would be difficult to find a happier combination than the trio responsible for the fortunes of the Bethlehem Bulldogs—Birney Crum, Leo Prendergast and Charlie Gauert. In addition to knowledge gained from years of experience in the coaching field, all have the faculty of imparting their knowledge of the game to their charges and making it stick—and all are thoroughly conversant with the intricacies of the "T" used by the Bulldogs.

The combined activities of Crum and Prendergast as players and coaches total more than a half century. Despite this long span of football activity, their football thinking today is as modern as television.

Although lacking the long experience of his associates, Charlie Gauert's contribution to the coaching set-up is considerable. A keen student of the game, he brings to the overall picture the ultra-modern viewpoint of the young coach whose big-league playing days are only just behind him. He will do most of the Bulldog's scouting, a field in which despite his comparative youth, he has gained an enviable reputation.

It has been twenty-seven years since Birney Crum, after a brilliant athletic career at Muhlenberg College, began to teach the art of doing things with a football. His first coaching assignment was at the Sommerville, New Jersey, High School, where he remained for the 1923 season, and then took over at Carnegie, Pa., High School. In 1925 he came to the Allentown High School and embarked on an amazing coaching career in football, basketball and baseball. He has achieved national prominence through numerous demonstrations and lectures at coaching clinics.

The Bulldogs too are fortunate in having the services of Leo Prendergast to coach their forward wall. No less an authority than George Halas, head coach of the Chicago

Bears, regards him as one of the country's outstanding line specialists.

The silver-thatched mentor began his football career at Kiski Prep. In 1921 and 1922 Leo played at Lafayette under the great Jock Sutherland, developing into one of the country's great guards. He took part in the first great inter-sectional football game in New York's Polo Grounds against Washington and Jefferson before 50,000 spectators.

In 1923 he transferred to St. John's College in Brooklyn. Coach Ray Lynch switched him to the end position where Leo promptly proved himself as adept as he had been at guard. After two brilliant seasons he was elected captain of the All-Metropolitan eleven, made All-Eastern and received All-American Honorable Mention. After graduation he played two years with the New York Giants.

He has been head coach at Liberty High School in Bethlehem, and at Lehigh University. While at Liberty High, his teams met Allentown High, coached by Birney Crum, five times. Leo won two, lost two, and tied one.

Charlie Gauert, though born in Chicago, received most of his early schooling in suburban Philadelphia. He developed into one of the most versatile boy athletes of that district, participating in football, basketball and track. He was named to several All-Scholastic football and basketball teams, and held the district shotput record for two years.

As a Freshman at Colgate University in 1940 he played quarterback. The following year he made the varsity and alternated between end and fullback. He left school in his senior year to join the U. S. Navy. Upon discharge he joined and played with the Philadelphia Eagles, by whom he had been drafted for three years. Greasy Neale has often said that Gauert could have become one of the game's great ends, but Charlie's thoughts were on coaching. When the opportunity came in 1947, he joined the Bulldogs.

LOSS OF FIVE YARDS

1. Taking more than four times out during either half (except for replacement of injured player).
2. Illegal delay of game.
3. Violation of kickoff formation.
4. Player out of bounds when scrimmage begins.
5. Failure to maintain proper alignment of offensive team before ball is snapped. Also, backfield man illegally in motion.
6. Offside by either team, or encroachment on neutral zone.
7. Attempt to draw opponents offside.
8. Flying block or flying tackle.
9. Illegal use of hands and arms by defensive player.
10. Intentional grounding of forward pass.

PENALTIES

LOSS OF FIFTEEN YARDS

11. Team not ready to play at scheduled time.
12. Violation of rules during intermission.
13. Illegal return of suspended or disqualified player.
14. Failure to stop at least one second on shift play.
15. Interference by member of passing team with defensive player on an interception. (Also loss of a down.)
16. Illegal use of hands and arms by offensive player.
17. Defensive player striking opponent above shoulders.
18. Roughing the kicker.
19. Piling up, hurdling, clipping.
20. Tackling player out of bounds.

OTHER PENALTIES

21. Striking, kneeling, or kicking opponent—disqualification of offending player plus loss of fifteen yards.
22. Foul within one yard line—half the distance to the goal.
23. Interference by defensive team on forward pass—first down for passing team at spot of foul.
24. Illegal forward pass—five yards from spot of pass, also loss of down.
25. Flagrant roughing of kicker—disqualification, plus fifteen yards.
26. Flagrant unsportsmanlike conduct—disqualification, plus fifteen yards.
27. Forward pass becoming incomplete beyond the line of scrimmage by touching or being touched by an ineligible player—loss of fifteen yards from spot of preceding down, play to count as down.
28. Illegal touching of kicked ball inside opponent's 10 yard line—touchback.

Bricker's

BREAD

AND

ROLLS

Phone Beth. 7-4127

LUCKY NUMBER

C N^o 49167

Old Mill Lodge

in CENTER VALLEY
DELIGHTFUL DINNERS IN A RUSTIC SETTING

BEERS :: WINES :: LIQUORS

Your New Host and Hostess:

AL and MARY MORRIS, of the
American Hotel, Bethlehem

Catering Specialists for:

BANQUETS :: WEDDINGS :: ANNIVERSARIES

MARGE AND PAT TOCCI ENTERTAINING ON FRIDAY AND SATURDAY NITES

Weekday Dinner 5 to 10 p. m.
Sundays and Holidays 12 to 8 p. m.
A la Carte 10 p. m. to closing
Monday - A la Carte only

Hawaiian Warriors' Roster

No.	Name	Pos.	Ancestry	Hgt.	Wgt.	Yrs. with Team	Previous Experience	Hometown
74	HENRY ABREU	LHB	Hawaiian-Portuguese	5-08	176	2	U. of Hawaii	Honolulu
86	WARREN ACKERMAN	RE	Irish-Hawaiian	6-00	185	1	Hawaii Sr. League	Honolulu
94	ADRIAN "Ehu" ANDERSON	LG	Hawaiian-Norwegian	5-10	222	3	Hawaii Sr. League	Honolulu
89	BILL "Piilani" APAU	LT	Hawaiian-Chinese	6-01 1/2	215	2	Hawaii Sr. League	Wailua
93	JOHN "Kakaio" CABRAL	RT	Hawaiian-Portuguese	6-02	216	4	Hawaii Sr. League	Honolulu
85	LOUI "Opu" CASTRO	QB	Hawaiian-Portuguese	5-10	202	1	Hawaii Sr. League	Honolulu
70	ALVIN KAUIA CHANG	QB	Hawaiian-Chinese	5-06 1/2	172	3	U. of Redlands	Honolulu
87	LOUI "Kalani" COLLINS	RE	Hawaiian-Swiss	6-00	205	1	U. of Hawaii	Honolulu
68	DANNY "Kaniala" DeREGO	RHB	Hawaiian-Portuguese	5-11	175	1	Hawaii Sr. League	Honolulu
55	HOWARD "Laho" GUERRERO	LE	Hawaiian-Spanish	5-08	174	2	Hawaii Sr. League	Honolulu
77	JOHNNY HAN	LHB	Hawaiian-Korean	5-09	188	1	Wiesbaden Commanders, AF Germany	Honolulu
90	WALLY LAM HO	FB	Hawaiian-Chinese	5-10	208	2	U. of Hawaii	Honolulu
80	ED "Nihinihi" HULIHEE	RHB	Hawaiian	5-10	190	2	Hawaii Sr. League	Honolulu
63	ARTHUR "Pokii" JOAO	QB	Hawaiian	5-06	170	2	Hawaii Sr. League	Honolulu
84	GEO. "Kaoha" KALAAU	LE	Hawaiian	5-11	188	2	Hawaii Sr. League	Kauai
83	BILL "Popoki" KANG	RG	Korean	5-11	210	2	U. of Hawaii	Honolulu
95	TOM KEALOHA	C	Hawaiian	5-11	210	2	Hawaii Sr. League	Honolulu
97	BILL MALAMA	LT	Hawaiian	6-00	196	1	Hawaii Sr. League	Honolulu
69	BOB NELSON	RE	Swedish	6-01 1/2	196	2	U. of Washington	Tacoma, Wash.
67	VERNON NEVES	LHB	Hawaiian-Portuguese	5-10	178	1	Hawaii Sr. League	Honolulu
96	JOHNNY RUIZ	LG	Hawaiian-Portuguese	5-10	224	2	Hawaii Sr. League	Honolulu
99	BOB SHIBUYA	C	Japanese	5-10	214	2	U. of Hawaii	Honolulu
88	FRANK TRIGILIO	FB	Italian	6-00	215	3	Los Angeles Dons	Buffalo, N.Y.
98	SADAO WATASAKI	RT	Japanese	5-11	228	1	U. of Hawaii	Honolulu
58	JOHNNY "Kailua" WRIGHT	LE	Hawaiian-English	5-11	170	3	Hawaii Sr. League	Honolulu
72	WALLY YONAMINE	RHB	Japanese	5-09	186	2	S. F. 49'ers	Maui

SAVE WITH A SEASON TICKET BOOK

and WATCH the

BETHLEHEM BULLDOGS

THIS YEAR



\$8.50

Reserved Seat
Season Book
(5 Games)



RESERVED SEAT per game \$2.00
GENERAL ADMISSION - 1.25

MAIN TICKET OFFICE: 2637 EASTON AVENUE, BETHLEHEM PHONE 6-8302

"IN AND OUT OF THE HUDDLE"

* By AL ENNIS

The Bulldogs' plane trip to Erie last Sunday brought to light hitherto unsuspected talents on the part of two of their linemen—Bucky O'Connor and George William Terry. Both took upon themselves the job of squiring the two charming air hostesses assigned to the flights by T.W.A., and both worked full time at their self-appointed jobs. Only twice during the day were they unable to turn the full charm of their personalities upon the ladies—once when they were on the field against the Erie Vets, and once, at the evening meal, when the girls apparently preferred the more enlightening conversation of Coaches Crum, Prendergast and Gauer. But for the rest of the trip home, the boys were in command. It was interesting to watch their techniques. Bucky used the more subtle method favored at Notre Dame—a toothsome smile, a well-turned compliment, and perhaps the brushing of hands. Clown Prince Terry favored the more direct approach so prevalent in his native Hollywood, and was immune to attempts to brush off his attentions. Both Romeos fought off all opposition from their teammates throughout the day—and both waved tearful goodbyes into the sky as the airliners roared off into the night.

Of the thirty-one players on the Bulldogs' squad, twenty are happily married. Eleven still enjoy single blessedness, although several are contemplating the leap into matrimonial waters in the near future. Twenty youngsters are in the football family—twelve boys and eight girls.

Bethlehem football fans are due to see a replay of the bitter struggle waged by the Bulldogs in Erie last Sunday, when the Erie Vets journey to Bethlehem on Wednesday night, September 21st, for

another whack at the Dogs. Make no mistake—this Erie aggregation is a fine football club, as witness their holding the powerful Pittsburgh Steelers to a 10-7 score. It is quite probable that the Vets will be admitted to the American Football League next season. They should prove a welcome addition to the circuit.

Thanks to big John Geosits, the football used last Sunday at Erie now hangs in the Bulldogs' office as a souvenir of the team's first 1949 victory. As the game ended, big John scooped up the pigskin, tucked it into his helmet, and headed for the locker room.

When big Tom Guthrie arrived in Bethlehem from the Chicago Bears' training camp, the first one to greet him was Boley Dancewicz. Boley and Tom were teammates on the 1944 Irish eleven. Then Bucky O'Connor, former Notre Dame guard, arrived from the Buffalo Bills, and Boley and Tom formed a two-man committee to welcome him.

When the Bulldogs alighted from their planes at Erie last Sunday, they found two loyal home-town rooters waving a greeting to them. Mr. and Mrs. Leavitt Frey, of Bethlehem, had driven all night to be on hand to welcome them. How can you miss with supporters like that?

A much-traveled footballer is Tackle George Terry, the Tank That Walks Like a Man. His grid career lists service with Glendale Junior College in California, where he was a teammate of Harlan Dedrick; the College of the Pacific; the Hollywood Bears of the Pacific Coast League; the Fleet City Bluejackets, one of the great service teams; the Los Angeles Dons; and the San Francisco Forty-Niners.



KIST BEVERAGES

Five Delicious Flavors

Orange

Lemon

Cherry

Birch

Grape



DISTRIBUTOR

FRANK BANKO

806 E. FOURTH ST.

PHONE 7-3983

BETHLEHEM, PA.

Santoro

**RADIO
SERVICE**

SOUND SERVICE ENGINEERS FOR BULLDOGS IN L.H.S. STADIUM

1643 BROADWAY BETHLEHEM
TELEVISION - RADIO - PUBLIC ADDRESS
Sales and Service

GUARANTEED REPAIRS

Phone 6-8343

ANTHONY P. SANTORO, PROP.

It's The Best Food in Town
at

THE ORTWEIN'S

Tommy and Catherine

EAGLE HOTEL



430 MAIN STREET
HELLERTOWN

**NATIONAL
Coat & Apron Supply, Inc.**

Bethlehem, Pa.

Phone 7-7451



**Bethlehem Electric Laundry
& Dry Cleaning**

"Like Twins—Dry Cleaning and Laundry Go Together"

Bethlehem, Pa.

Phone 6-1322

From Allentown—Phone 3-3532

GEORGE HALKIAS, Mgr.

Miers-Bachman Lithographing Co.

COMPLETE PRINTING AND LITHOGRAPHING SERVICE

Printers of

Football Programs for
Bethlehem Bulldogs - Allentown High School
Stadium Enterprises

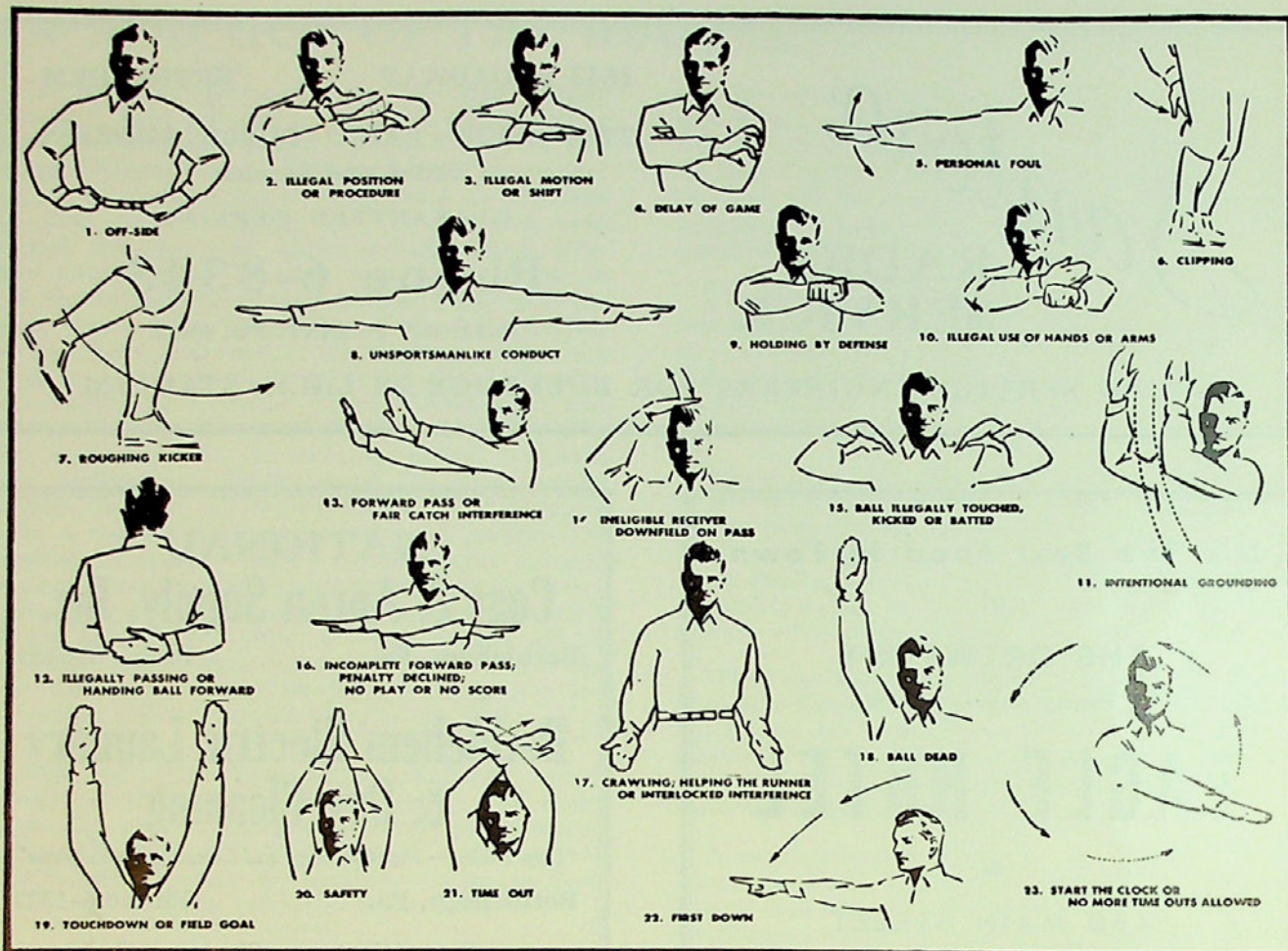
ALLENTOWN FAIR RACE PROGRAMS



Phone 3-5204

330 S. WEST STREET

ALLENTOWN, PA.



WITWER-JONES CO.

Sporting Goods

923 HAMILTON STREET
ALLENTOWN, PA.

Phone 2-2780

"A Store You'll Like—On the Bethlehem Pike"

SAWYER EQUIPMENT CO.

1330 CENTER ST. BETHLEHEM, PA.

Telephone 7-3765

SPORTING GOODS

Firestone Tires Auto Accessories

TELEVISION ★ APPLIANCES ★ RADIO

PHILCO DISTRIBUTOR

DON SAWYER, Owner

2 COMPLETELY AUTOMATIC "package" HEATING UNITS

For OIL . . .

The Bethlehem DYNATHERM

Gives you MORE HEAT from LESS OIL!

For COAL . . .

The Bethlehem ANTHRATUBE

SAVES up to 40% IN COAL CONSUMPTION!

MANUFACTURED BY

**BETHLEHEM FOUNDRY
& MACHINE COMPANY**
BETHLEHEM, PENNSYLVANIA

The All-American Drink



LUCKY NUMBER

D N° 63606

There's no better kick-off to a good time than a frosty bottle of Coca-Cola. When there's life and tingle in the air, remember there's life and tingle in ice-cold Coke--to refresh you and keep you on your toes.

Coke and good sports just simply go together. That's why, in stadiums across the land, the pause that refreshes with ice-cold Coca-Cola is part of the game--the friendly, sociable part--the part you play. Enjoy it.

★ ★

Bottled Under Authority of The Coca-Cola Company By
Coca-Cola Bottling Co. of Pennsylvania

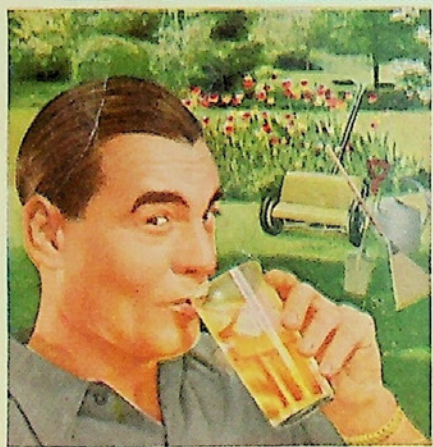
BETHLEHEM, PA.

Whatever your hobby

When day is done . . . you

deserve

SCHENLEY



It's a Grand and Glorious Feeling when you land the biggest trout of the day. And it's a glorious feeling, too, when you enjoy Schenley in your favorite drink. For Schenley is richer, finer *always*. Its smooth, mellow taste is the result of Schenley's rare, older whiskies and matchless blending skill. So, when day is done, treat yourself to the best. Enjoy Schenley, the whisky of *unchanging* perfection.



Whatever Your Hobby . . .

fishing, gardening, or "arm-chair" baseball . . . when day is done, it's time for Schenley. Treat yourself and your friends to delicious drinks made with finer-tasting Schenley. You'll agree every drop of Schenley is richer, *more satisfying!*

Richer
Finer
SCHENLEY



A Schenley Mark of Merit Whisky

from **SCHENLEY**

the House of Aged Whiskies

RARE PRE-WAR QUALITY BLENDED WHISKY. THE STRAIGHT WHISKIES IN THIS PRODUCT ARE 5 YEARS OR MORE OLD. 35% STRAIGHT WHISKY. 65% GRAIN NEUTRAL SPIRITS 86 PROOF. SCHENLEY DISTRIBUTORS, INC., NEW YORK CITY.