

BETHLEHEM

The Star

Sept. 15 - 21, 1994

50 cents

Copyright © 1994 Vol. 1, No. 42

Bethlehem's Community Newspaper

WHY DO WE OWN A DUMP?

“This city has always had a tough time trying to make a decision to stay in the trash business. Well, we're in.”
Thomas Mohr—City Councilman

BY CHRISTOPHER JUDD

In a few weeks, the city of Bethlehem gets back into the waste management business.

Two years ago, the only city in Pennsylvania that owns and operates its own landfill had an opportunity — and indeed tried — to turn over the 200-acre site to professionals, but no one was buying.

The landfill along Applebutter Road in Lower Saucon Township was 50 years old when the state Department of Environmental Resources ordered it closed and cleaned up in December 1991. The city was faced with three options: shut it down and grow grass over it; sell it to a private landfill operator; or dig another hole and resume taking trash.

Page 14, please

inside

opinion

random shots

The senseless death of a 59-year-old woman from a stray bullet was no accident — and shouldn't be treated as one.

Page 4

sports

natural born kicker

Freedom's Erik Bernotas has the ultimate soccer scorer's mentality — have ball, will shoot.

Page 12



legacy

preppie past

Two posts engraved with "Class '16" are all that's left of Bethlehem Prep.

Page 10



nature

finch fables

It's hard to believe that 50 years ago the house finch, that familiar and ravenous fixture at most bird feeders, was as scarce as it is now ubiquitous.

Page 9

up front

By GERALD SCHARF

Grazing for charity

Bethlehem, like all great cities, has a lot of great causes. It seems, sometimes, that you can't turn around without bumping into someone collecting money or asking for volunteer labor.

If you lose sight of the fact that this "problem" is simply evidence that a lot of people are doing a lot of good things here, you might find it all a little tiresome.

That said, it's especially pleasant to find a group using creative approaches to the grim task of fund raising.

A great example of this is the Historic Bethlehem Partnership's new "Tables on Tour" campaign.

Here's how it works.

For \$100 (for \$125 you can be a sport and get listed as a patron), you can choose from among 12 feasts at 12 of Bethlehem's most elegant homes.

Jane Biggs, co-chair of the event, explains that guests will choose their dinner from descriptions printed on invitations. The event will begin at a pre-dinner reception, sponsored by the Holiday Inn at the Kemerer Museum. There the diners will learn whose home they will be visiting.

The money will go to HBP, which supports Burnside Plantation, the Kemerer Museum

of Decorative Arts and the programs of Historic Bethlehem, Inc., and the Bethlehem Area Chamber of Commerce Foundation.

The gourmet event will be held on Oct. 8, and reservations must be made by Sept. 23.

Jerry Bastoni, Executive Director of HBP, said in an announcement "Tables on Tour" is the first of what we hope becomes an annual event. We want to raise \$20,000 to fund research into local history, services to local school districts, costume design, and scholarships to history camp at Burnside Plantation."

"Investing in our community should always be this tasty. Here are descriptions of the feasts from which to choose:

- **Game Dinner** – Pumpkin soup, pheasant a l'orange accompanied by wild rice in seasoned stock, a spinach and artichoke casserole, tossed salad, dessert



Gerald Scharf
is editor of
The Bethlehem Star

and coffee.

- **A taste of the Carolinas** – Mint juleps, she-crab soup, scallops mornay with accompaniments, pecan pie or a lighter, fruit dessert, served while diners listen to a repertoire of melodies of the South.

- **Fisherman's fantasy** – New England's freshest codfish and shrimp find a happy blend in a casserole with tomatoes and feta cheese, served with orzo simmered in a wine broth; lightly poached garden strawberries served with ice cream and Grand

(stuffed grape leaves) and hummus, followed by *kibbeh* (beef) and *tabbouleh*, a salad of seasoned cracked wheat. Coffee is accompanied by a dizzying assortment of sweets.

- **A la Louisiane** – Visit the "Big Easy" for snapper soup with sherry, salmon with mustard sauce, potato-tomato gratin, seasonal vegetables, chocolate pecan bourbon tarte.

- **The emperor dines in** – In the tradition of the royal court, a Chinese banquet: hors d'oeuvres of scallion oil shrimp and tea eggs, then lemon chicken, chili pepper beef, and stir-fried vegetables.

- **Willkommen** – The taste of Germany and Austria combine in a memorable dinner. An appetizer of *busumer krabben* (shrimp) is followed by a spinach romaine salad, wild rice compliments *zigeunerschnitzel* (gypsy-style veal), then cranberry chocolate torte, cheesecake, linzer cookies and *kif-fels*.

- **Spanish fiesta** – Begin with *empadillas de pato* (duck turnovers) and pineapple with Catalan cream; then Spanish bean soup and mango sherbert prepare for *escalopitas de ternera perfumadas al Estragon* (veal scallops), asparagus with almond sauce and potato nest with shrimp, and chocolate banana mousse with pistachio figs.

- **European elegance** – Coquilles St. Jacques introduces us to the continent. Visit Spain for white gazpacho and Italy for antipasto. A Swiss intermezzo of *poire* William sorbet prepares us for *wienerschnitzel* and *rotkohl* (red cabbage and apples). The dream ends with *Doboshtorte* with creme chantilly.

This sounds to me like a memorable event to share with friends.

The hosts are: David and Noel Adams, Frank and Peggy Baker, Rob and Jane Biggs, Bill and Ursie Fairbairn, Bob and Susan Gadowski, Ray and Thelma Holland, Aoun and Teresa Kara, White and Jane Matthews, Bob and Edeli O'Connell, Charles and Marty McIntyre, Cheryl and Jack Peters, Don and Mary Trautlein, and Constantine and Nikki Vasiliadis.

To make reservations, call 882-0450 between 8:30 and 5 p.m., Monday through Friday. Remember, these are private homes and seating will be limited, so call early.

The money from "Tables on Tour" will go to Historic Bethlehem Partnership, which supports Burnside Plantation, the Kemerer Museum of Decorative Arts and the programs of Historic Bethlehem, Inc., and the Bethlehem Area Chamber of Commerce Foundation. Investing in our community should always be this tasty.



Marnier sauce are an elegant finish.

- **Continental kaleidoscope** – An epicurean tour of Europe: Scandinavian smoked salmon, British beef Wellington with Parisian vegetables, and a Viennese frozen mocha soufflé to complete the tour.

- **London luxury** – An English feast in the Berkeley Square tradition: mushroom and barley soup, beef Wellington with Yorkshire pudding; finished with a light chocolate trifle and vintage port.

- **Greek feast** – *Tiropites* and *spanokopita* start a meal that will transport you to the sun-drenched Greek isles: entrees choices are *moussaka* and *arni yakni* (lamb stew) with *orzo*; Greek salad and *baklava* tops it off, while the music of the *outi* and *bouzouki* plays.

- **Middle Eastern holiday** – Authentic food of the Mediterranean: appetizers include *yebra*

contents

opinion

4 editorial, letters and cartoon

milestones

6 deaths, births, marriages

last week

8 the week in review

nature

9 arlene koch; news and notes

legacy

10 in days gone by

profiles

11 15 questions

sports

12 feature and calendar

cover story

14 soon the city of Bethlehem will be back in the waste management business and once again be the only city in Pennsylvania that owns and operates a landfill.

movies

16 trailers and showtimes

time out

17-21 the list

19 calvin and hobbles

masthead

The Bethlehem Star533 Main Street P.O. Box 229
Bethlehem, PA 18016-0229
telephone: 868-4444
fax: 882-1159**editor**

Gerald Scharf

advertising manager

Timothy Laubach

managing editor

Dave Ross

graphic artist

Erica Montes

layout editor

Tom Ostrosky

office manager

Heidi Fisher

advertising salesSandy McKinney
Larry Hippenstiel
Janette Weigand**news staff**Chris Judd, *writer*
Janet Worsley, *writer*
April Pilz, *photographer*
Thomas Harper, *sports*

The Bethlehem Star is published weekly in
Northampton and Lehigh counties.

Third Class postage is paid in Bethlehem, Pa.

Subscription rates are \$25 per year in the Bethlehem area,
\$35 in Pennsylvania and USA, \$50 in Canada.

ad index

art

6 Dick Blick Art Supplies

automotive10 Bennett Jaguar
23 Daniel's BMW
13 Isuzu Truck of the Lehigh Valley
21 Keystone Dodge
22 Key Pontiac-Nissan
22 Lehigh Valley Volkswagen
23 Milham Used Car
9 TCI Tire Centers**building, home, garden**10 Aykroyd Hardware
15 Bell Atlantic
20 CJ Tile
17 Eastern Rental and Equipment
20 Horizon Home Improvements
5 Miller's Paint & Wallpaper
7 Royal Furniture
20 Schaller's Decorating
20 Tilemaster
17 Tommy's Upholstery
11 Wood Doctor**department stores**

3 Leh's

florists8 Patti's Petals
8 RichMar Florist**food, drink and fun**19 Cheers
18 Da Vinci's
18 Gus's Crossroads Inn17 Market Street Deli
18 Marktplatz
13 Six Pack Shop
17 Todd's Cafe**gifts**

8 Glen Anthony Designs

health care15 Hunsicker's Pharmacy
15 Planned Parenthood
5 Westgate Optical
9 Young's Pharmacy**insurance**

13 Ruthhart Smith

learning & education11 National Education Center
11 Pedro Boone**leisure**

17 Touchstone Theatre

personal services17 Super Saver Salon
20 Total Body Tanning**photography**

9 C & J Photo

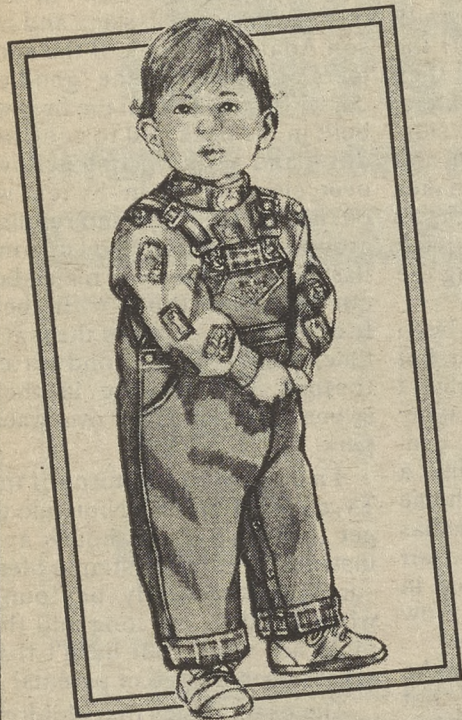
real estate28 Fishburn Realty
28 Fran Doyle Century 21
24-27 Home Buyers Guide
28 The Laurels
28 Prudential MGM Realtors**retirement**

5 Moravian Hall Square

travel

6 Iobst Travel

WE'RE YOUR HEADQUARTERS FOR OSHKOSH® PLAYWEAR



Each collection is unique in trim detail and you can be assured that kid after kid, OshKosh B'Gosh childrens clothes stand up to wear and tear. We think you'll find that when it comes to quality, they're definitely the Genuine Article. Infants, Toddlers, Girls 4-6x and Boys 4-7. Plus...Come In and Register To Win A \$100 OshKosh Wardrobe!

TAKE A BRAND NEW LOOK AT LEH'S...
And Discover What's In Store For You! Exciting Styles, Great Quality & The Best Brand Names Like OshKosh.

LEH'S

EST. 1850

America's Oldest Family Department Store

• WHITEHALL MALL • QUAKERTOWN PLAZA • BETHLEHEM SQUARE

SHOP ALL STORES DAILY 9:30-9:30... SUNDAY 11-5!

Opinion

Editorials and Letters

“ We have trained men to think of the future as a promised land which favored heroes attain — not as something which everyone reaches at the rate of 60 minutes an hour, whatever he does, whoever he is. ”

C.S. Lewis

editorial

It wasn't just an accident

The circumstances of Patricia Webster's death are almost too tragic to contemplate.

She was a 59-year-old grandmother, sitting on the back porch of her Cambridge Avenue home, babysitting grandchildren. It was the last day of her vacation from her job at Dun & Bradstreet; a beautifully crisp, fall afternoon.

Mrs. Webster was shot to death last Friday. An errant round from a 38-caliber handgun killed her.

According to police, a 24-year-old neighbor, Jerry V. Valianatos, was showing off a semiautomatic pistol he'd acquired.

Apparently, incredibly, Mr. Valianatos was firing this powerful handgun in a barn in a residential neighborhood.

A bullet, having pierced the barn wall, needed to travel only 20 yards to reach Mrs. Webster as she sat on her porch, watching the children play in the yard.

Police said Mr. Valianatos surrendered to authorities Monday. He was charged with involuntary manslaughter and a firearms violation — both misdemeanors.

If the facts reported by the police are determined to be accurate, then there is no alternative

but to swiftly and severely punish Mr. Valianatos, not as the co-victim of a terrible accident, but as the person responsible for a reckless act that resulted in a senseless death.

We support the right to own handguns (though we can think of few reasons for owning them). But with that right comes an obligation to respect the vicious capabilities of guns.

Mrs. Webster didn't die accidentally. She died because someone decided to take the risk of discharging a lethal weapon in a residential neighborhood.

In the blink of an eye, the life of an innocent woman was extinguished; and the life of a young man was changed forever.

Why? Because apparently Mr. Valianatos, like many other owners of guns involved in fatal accidents, did not respect the heavy responsibility that comes with gun ownership.

As a community, we must answer that kind of irresponsibility with severe punishment.

This punishment not only pays respect to Mrs. Webster's life, but puts other gun owners on notice that while they may have the right to own a gun, they damn well better ensure it's used responsibly.

How to get published

The Bethlehem Star will publish your written views of events and issues in the city so long as these rules are followed:

Letters should be no longer than 200 words, be in good taste, and be signed by the writer.

Include your telephone number so your letter can be verified.

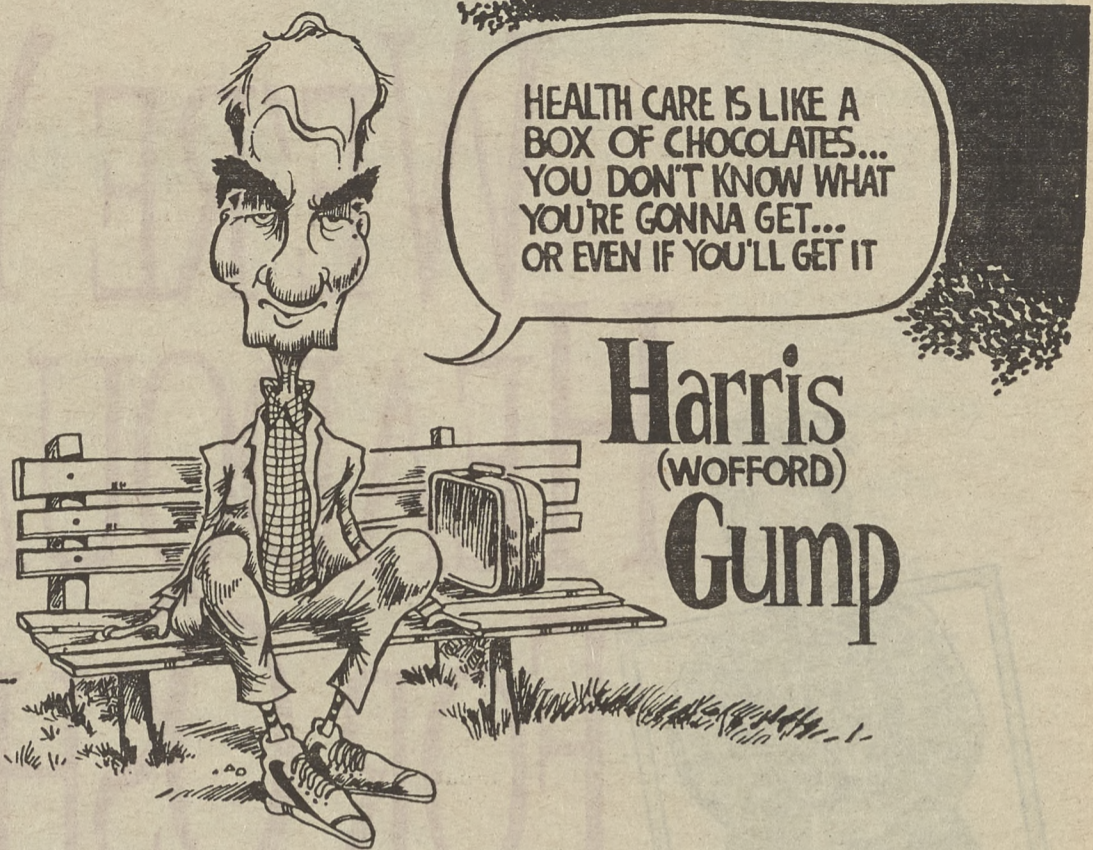
The Bethlehem Star reserves the right to edit any letters.

If your topic requires longer treatment, contact the editor to arrange to publish a guest column. Here's how to reach us:

By mail: The Bethlehem Star, 533 Main St., P.O. Box 229, Bethlehem, PA., 18016-0229.

By fax: 882-1159

By telephone: 868-4444.



letters

Summer traditions remain

Dear Mr. Scharf:

Flipping through The Star, I came upon the article by Bruce Alan Sigmon where he posed the question, "What ever became of good ol' summer?" (Aug. 18). I feel compelled to write to let him know those summer traditions he remembers so fondly are alive and well. Of course, there are a few minimal changes with technology being what it is.

The ice cream truck still drives through our neighborhood every day, though the driver doesn't ring a bell anymore. He plays taped merry-go-round music through a loudspeaker that the children can hear coming from blocks away. As annoying to adult ears as it may be, it does give the children more time to run in the house for money and get to the corner on time.

You still see the occasional lemonade stand on the corner too. I saw one the other day. I believe the lemonade was selling for a quarter a cup. The children running the stand were also selling tomatoes picked from their parents' garden. I even know a little boy who had a stand in his front yard who was selling tie-die T-shirts his father helped him make. At \$5 a shirt, the little entrepreneur made quite a handsome profit.

I'm sure the little boys who live

behind me can tell you just how many butterflies fly around. I see the boys running through my backyard quite often with their butterfly nets in hot pursuit of another specimen for their collection. And my son caught enough lightning bugs in a coffee can to try to make a flashlight. But, much to his dismay, he couldn't get them all to light at the same time for his idea to work.

Though the cannons you so fondly recall from your youth have indeed been taken off the market for safety reasons, they have been replaced by sparklers, snaps that you throw on the sidewalk which make a loud pop, and a disgusting thing called snakes which leave this lump of black ash on your sidewalk that at a quick glance looks like something the dog left behind.

As for the heat, it has been incredibly warm this summer, but I can recall only two days when I actually had to seek shelter at my parents' home as they have central air conditioning; otherwise, a couple of fans have kept my home comfortable. I think everyone has become too accustomed to air conditioned air — in the office, in the car, and in their homes. Now they just mind the heat more.

Children still run through the sprinkler in the backyard, but these days it's coupled with a wading pool and some other water toys like these plastic sheets you stretch across your backyard, aim the sprinkler on it, take a running start, and slide across.

There aren't any sandlots in our neighborhood, but the kids still play baseball. They use a couple of yards that back up to each other or go down to the cul-de-sac where there is no through traffic.

As for school shopping, I know I still take my children, as do the

parents of every child I know. A hot topic of discussion between us all in August is who is having a sale on jeans and where you can get the cheapest name brand sneakers (since these are the staples of any public school child's wardrobe). The children may not look as well groomed as the children of years ago, but trust me, parents are paying a pretty penny for all the latest styles.

Forty years from now I'm sure that my daughter Jessica and my son Adam will think of the summers of the 90's as the "good ol' days." They will recall the fires we built in the backyard to cook hot dogs and roast marshmallows over, sleeping out in the tent we pitched on the patio, and running around the backyard playing flashlight tag. They will remember our backyard filled with their friends (six or seven of them at a time), playing Frisbee and vortex football, or everyone in their swimsuits making their own water park.

I may have had to turn off the TV, the VCR, and the Nintendo to get them out of the house and instruct them in the simple pleasures that can only be found when the days are long and the night are warm, but hasn't that always been the job of parents?

The exact things that children do to entertain themselves during the summer may have changed slightly over the years, but the children are still creating memories. These memories and the warm feelings these memories invoke will remain with them and be as timeless to them as the season.

Sincerely,
Tracy Hay Staats
Bethlehem Township

around the city

New business takes hassle out of travel

By JANET WORSLEY

When entrepreneur Dan Guth talks about entertainment, he's not thinking about an afternoon at Dorney Park.

Try, instead, dinner and dancing on a luxury yacht, choice tickets to a Broadway show, or a ride in a limousine.

Or, all of the above.

Mr. Guth, a native of South Bethlehem, is the president of MJS Entertainment Company — a new local business which provides a "one-stop shopping" service for trips to Philadelphia, New York, Atlantic City and beyond.

MJS will help plan an excursion, provide transportation, meals and tickets to shows and sporting events. Though some trips are already mapped out, custom trips are an MJS speciality, according to Mr. Guth.

"Whatever your imagination is, we'll plan the trip," he said.

For example, Mr. Guth is currently planning an office party for a Lehigh Valley business. One hundred and fifty employees will enjoy a cruise on New York Harbor in an 80-foot yacht — complete with food, drinks and music — before taking a spin into Man-

hattan to the site of the famed Christmas tree in Rockefeller Center.

Standard trips include Wednesday matinees on Broadway, shopping on Fifth Avenue in New York City, and casino hopping in Atlantic City. Also in the works are trips to see David Letterman, Rush Limbaugh, and the home games of the Eagles, the Jets, the Giants and the Redskins.

He stressed the importance of customer service at MJS, saying that trips are planned months in advance to ensure the best seats at performances and sporting events.

The prices of the trips vary according to destination and number of people. A 10-hour trip to NYC, which includes dinner, a Broadway show and drinks, runs about \$179 per person.

Mr. Guth, a graduate of Liberty High School in Bethlehem, returned to the city last year after pursuing several jobs across the country.

At that point, he decided he wanted to start his own business. "I was looking to do something customized, something that I could have fun with," he said.

The idea of MJS was sparked

after Mr. Guth took his daughter, Michelle, and a group of her friends into New York City for her birthday.

Mr. Guth said that afterwards, he and a friend realized that while New York City and Philadelphia are close to the Bethlehem area, fighting traffic and parking can be a hassle. And bus trips, though convenient, can be uncomfortable and far from glamorous.

The solution, he said, was MJS, a company that would offer complete trips with one phone call from the customer.

MJS is named after Mr. Guth's most indispensable consultants, his three children, Michelle, Justin and Stacey.

The kids, experts on what they like, help their father plan MJS trips for children. Children's trips include the Franklin Institute in Philadelphia, the Camden Aquarium, or the Metropolitan Museum of Art. For the holidays, the Christmas Show at Radio City Music Hall, and shopping at F.A.O. Schwartz are offered.

Lunch is included in the price of the children's excursions, which run from \$29 to \$59.

Mr. Guth is also accepting trip suggestions from customers. "If anybody has a better idea, we're open," he said.

Since the business officially opened on Sept. 6, Mr. Guth said, MJS has been booking trips. "I've been on the phone all morning," he said a few days after the MJS kickoff, "It's been great."

To reach the MJS Entertainment Company, call 800-750-7718.

Celebrating **Our 6th Store!**

GRAND OPENING

REGISTER TO WIN!

• Free Room Make-Over (Wallpaper and/or Paint)
• \$400 in "Miller Dollars" Gift Certificates

No Purchase Necessary

We pledge \$1.00 to the Liberty H.S. Florida Football trip for every gallon of Ben Moore paint purchased at our Bethlehem store during September.

Benjamin Moore PAINTS

60% OFF
Hunter Douglas
WINDOW TREATMENTS

30% OFF
NEW BRUSHES
WHEN YOU BRING
IN AN OLD BRUSH

30% OFF
ALL WALLPAPER ORDERS
PLUS MANY MORE STOREWIDE DISCOUNTS!

MILLER'S PAINT & WALLPAPER STORES

NEW STORE Rt. 191 (Linden St.)
3 miles south of Rt. 22
Bethlehem
865-3320

VISA

MasterCard

Discover

Novus

4041 Wm Penn Hwy.
Easton
252-7575

"IT'S SO EASY
TO ENJOY A PLEASANT
VISIT WITH MOTHER."



Anita Keck & her mother Mary Kabler Knecht

Anita and her mother have continued their close, loving relationship since Mary moved to Moravian Hall Square five years ago. Their lives of giving recently led to Anita and Mary's recognition as "Volunteers of the Month" at Moravian Hall Square.

The Bethany House Assisted Living Center and Thaeler Health Care Center offer privacy and security in a supportive environment from the community you trust.



MORAVIAN HALL SQUARE
RETIREMENT COMMUNITY

Schedule a visit to our campus
or call (610) 746-1000 for a free brochure.



ACCREDITED BY THE CONTINUING CARE ACCREDITATION COMMISSION
OF THE AMERICAN ASSOCIATION OF HOMES FOR THE AGING.

175 W. NORTH ST., NAZARETH, PA 18064 610/746-1000

VARILUX WEEK AT WESTGATE OPTICAL

STOP IN TO SEE FACTORY REPRESENTATIVES

SEPTEMBER 19-24 ONLY

Stop in for a
FREE GIFT

\$25 OFF
Varilux Comfort
Exp 9-24

\$25 OFF
Transitions Plus Adjustable Tint Plastic Lenses
Exp 9-24

\$25 OFF
Any Non-Sale Frame
Exp 9-24

THESE OFFERS MAY BE COMBINED WHEN APPLICABLE
Some Restrictions apply-not valid on orders placed before 9-19-94

Daily drawings for free frames, lenses, State Theatre tickets etc.

VARILUX REP. ON SITE
SEPTEMBER 19-24 ONLY
VARILUX COMFORT

FREE EYEGLOSS CLEANER AND CLEANING CLOTH W/PURCHASE

WESTGATE OPTICAL 867-1182
WESTGATE MALL, BETHLEHEM

Milestones

Bethlehem's Vital Statistics

deaths

EDITH T. SMITH, 95, formerly of Christian Street in Bethlehem, died Monday, Sept. 5. The wife of the late Harold W. Smith. A member of St. Peter's Lutheran Church in Bethlehem.

THELMA J. DORNBLASER, 40, of 5145 William Penn Highway in Bethlehem Township, died Wednesday, Sept. 7. The wife of Walter F. Dornblaser. Worked for Pfizer Inc. in Easton, and was a member of Good Shepherd Lutheran Church in Wilson.

ALOMA COMPTON, 67, of 231 Main St. in Freemansburg, died Wednesday, Sept. 7. The wife of Joseph Compton. A member of Trinity United Church of Christ in Freemansburg.

MARGARET E. KISH, 74, formerly of East Fourth Street in Bethlehem, died Wednesday, Sept. 7. The wife of the late George Kish. A sewing machine operator at Fountain Hill Mills. A member of St. John's Windish Lutheran Church in Bethlehem.

LOUIS MESSICK, 81, of 335 S. New St. in Bethlehem, died Friday, Sept. 2. The son of the late Charles and Mary Messick.

CATHERINE HENNING, 79, formerly of Bethlehem, died Wednesday, Sept. 7, in Oklahoma City, Okla. The wife of Lester Henning. A member of Ss. Cyril and Methodius Catholic Church in Bethlehem.

EDWARD E. SHIPLEY, 85, of 430 Main St., Apt. 2B, in Bethlehem, died Thursday, Sept. 8. A general manager of Hausman Steel in Lansing, Mich.

BETTY J. ZELLNER, 69, of Bethlehem, died Thursday, Sept. 8. The wife of the late Robert P. Zellner Sr. A member of Christ UCC in Bethlehem, and a director of the Bethlehem Lioness Club.

ROBERT J. BARNETT, 70, of 1618 North Blvd. in Bethlehem, died Thursday, Sept. 8. The husband of Herta T. Barnett. A clerk at the Lehigh Valley Post Office for 34 years. A member of St. Anne's Catholic Church in Bethlehem.

JAMES KLOTZ, 84, of 5418 Highland Ave. in Hanover Township, died Wednesday, Sept. 7. The husband of Winifred E. Klotz. Employed by the Bethlehem Steel Corp. A member of St. Peter's Lutheran Church in Bethlehem.

RICHARD RICHARDS, 68, of 1767 West Blvd. in Bethlehem, died Thursday, Sept. 8. The husband of the late Elizabeth Richards. A PBX installer for AT&T in Bethlehem. A member of Wesley United Methodist Church in Bethlehem.

LUIGI MARCOZZI, of 758 Front St. in Hellertown, died Friday, Sept. 9. The husband of Amerinda Marozzi. Employed in the maintenance department of the Bethlehem Area School District. A member of Our Lady of Pompeii of the Most Holy Rosary Catholic Church in Bethlehem.

STANLEY E. RICE, 70, of Lake Worth, Fla., formerly of Bethlehem, died Thursday, Sept. 1. An electrical contractor in the Bethlehem area until retiring.

DANIEL KWASNOSKI, 59, and **CAROLYN A. KWASNOSKI**, 57, of 1874 Dartford Road in Lower Saucon Township, died Thursday, Sept. 8, in the crash of USAir Flight 427 in Pittsburgh. They were married for 33 years. He was an engineer for the Bethlehem Steel Corp. They were members of St. Theresa's Church in Hellertown.

MARGARET D. EDGE, 71, of 2858 County Line Road in Lower Saucon Township, died Friday, Sept. 9. A secretary for two district justices in Lower Saucon, and formerly a secretary for Bethlehem Steel Corp.

KEVIN WRECSICS, 23, of 506 Hayes St. in Bethlehem, was killed Friday, Sept. 9, in a car-truck accident. The son of Jessie M. Wrecsics of Bethlehem and Gerald H. Wrecsics of Florida.

MADGE L. SPECK, 93, of 701 Main St. in Bethlehem, died Friday, Sept. 9. The wife of the late William G. Speck Jr. A member of West Side Moravian Church in Bethlehem.

MILDRED N.S. HEINEMAN, 81, formerly of 2110 Pennsylvania Ave. in Bethlehem, died Thursday, Sept. 8. The wife of the late Andrew F. Heineman and LeRoy C. Smith. A member of St. Andrew's Episcopal Church in Allentown.

EFFIE E. SZABO, 77, of 1737 Third St. in Bethlehem Township, died Friday, Sept. 8. The wife of John F. Szabo. A member of Trinity United Church of Christ in Freemansburg.

JOHN G. WAIDNER, 61, formerly of 2075 Hopewell Road in Bethlehem, died Saturday, Sept. 10. Taught in the Bethlehem Area School District and worked with gifted students at East Hills and Nitschmann Middle Schools. A Scoutmaster to a Boy Scout troop in Hellertown. A member of First United Church of Christ in Bethlehem.

AWILDA VELEZ, 43, of 1261 E. Fourth Street in Bethlehem, died Saturday, Sept. 10. A member of Holy Infancy Catholic Church in Bethlehem.

RUSSELL S. HAWK JR., 71, of 2107 11th St. in Bethlehem Township, died Saturday, Sept. 10. A crane operator for the Bethlehem Steel Corp. A member of St. John's Windish Lutheran Church in Bethlehem.

ROSE MARIE ZAKSZESKI, 71, of 2328 Sixth St. in Bethlehem Township, died Sunday, Sept. 11. The wife of Edward J. Zakszeski. A member of Sacred Heart Catholic Church in Bethlehem Township.

MANUEL CUEVAS, 61, of 401 E. Fourth St. in Bethlehem, died Sunday, Sept. 11. A laborer for Eaton Corp. in Allentown for five years. A member of Holy Infancy Catholic Church in Bethlehem.

MARTIN J. KOZIK, 28, of 819 Muschlitz St. in Bethlehem, died Monday, Sept. 12. An encoder for the U.S. Postal Service in Bethlehem. A member of St. John's Slovak Lutheran Church in Lansford.

WILLIAM H. SILVERMAN, 90, of Bethlehem, died Sunday, Sept. 11. A retired private practitioner who served on the staffs of St. Luke's Hospital and Muhlenberg Hospital Center. A physician for the Bethlehem Area School District, serving at Broughal Middle School. A member of Congregation Brith Shalom.

MARTHA A. MOYER, 84, of 256 W. Fairview St. in Bethlehem, died Saturday, Sept. 10. The wife of the late Richard A. Moyer.

births

DENISE AND WAYNE HORTON, a son, Sept. 1, St. Luke's
LISA AND JOHN PINTANDE, a daughter, Sept. 2, St. Luke's
JOSEPH AND JENNIFER PENZES, a daughter, Sept. 2, St. Luke's
MR. AND MRS. FRED PIAZZA, a son, Sept. 2, St. Luke's
MARY AND GREGORY EISTER, a son, Sept. 2, Lehigh Valley
JOHN AND ANN LUSHIS, a daughter, Sept. 2, Sacred Heart
MICHAEL AND ELLEN BACA, a daughter, Sept. 3, St. Luke's
DAYAN XIAO AND ZIONG ZOU, twin sons, Sept. 4, St. Luke's

IAN AND JULIA CHAN, a daughter, Sept. 3, Sacred Heart
GARY AND JOANNE GARCSAR, a son, Sept. 5, St. Luke's
WENDY LORRAH AND SAM SANCHEZ, a daughter, Sept. 5, St. Luke's
DAYAN XIAO AND QIONG ZOU, twin sons, Sept. 4, St. Luke's
JESSIE MORALES, a daughter, Sept. 6, St. Luke's
ANTONIO AND PIETRA LIOTTI, a daughter, Sept. 6, St. Luke's
ANNE FRANKLIN-LEDYARD AND ROLAND LEDYARD, a daughter, Sept. 2, St. Luke's
KWAME CHANDLER AND MELANIE GRIDER, a daughter, Sept. 3, St. Luke's
MR. AND MRS. ARIEL FERRER, a son, Sept. 7, St. Luke's

Take
The
Road
to
EMMAUS
For
These
Great
Savings.

BACK TO  **Dick Blick** 

SCHOOL SALE '94

Art Materials

See us for
Back-to-School
supplies for all ages!

NOW THRU SEPT. 24

7th & Broad St., Emmaus, PA
(610) 965-6051
Mon.-Thurs. 9-5; Fri. 9-8; Sat. 9-5

WE SHOP TRAVEL SO YOU DON'T HAVE TO!

Carlson Travel Network

Grand Reopening & 15th Anniversary Celebration
Sept. 19-25, 1994

Tune in to
Royal Caribbean's Sail Sale
Sept. 25 1-3PM TV 69
Savings up to \$2300.00
with extra 
Bonus Features

- * FREE Tuxedo Rentals (CE Roth)
- * FREE 35mm Camera on selected sailings (Dan's Camera City)
- * FREE Valet Service for parking at ABE International Airport

IOBST TRAVEL SERVICE
328 Main St
Emmaus, PA
965-9025
Business Hours
Mon-Thurs 8-5:30
Fri. 8-8
Sat. 9-3
Sun 12-4

Broadway Shows
Sept 24 Miss Saigon
Oct 2 Grease
April 29 Phantom

Join Mary Mountcastle
Sept. 19 Holland America Cruises
One Day Sale

Join Angie Thompson-Lobb
Sept. 23 American Hawaii Cruise & Aloha Friday



Let us
Furnish
Your Castle
For Less...

ROYAL FURNITURE OF EMMAUS LET'S CELEBRATE!

EVERY- ITEM (ON OUR FLOOR) IS ON SALE.

Memo to all Royal Employees:
 The Last 10 months have been extra tough
 • from our moving into our bigger ware-
house
 • To our renovating the lower showroom
 • from the awful winter of 94
 • through our renovating of the main
showroom
 • to the water pipe break of 8-3-94
 It has been one very long haul and we (the
management) thank each and every
employee for all your hours and extra
efforts. Hopefully now we can settle in and
do what we do best — Move a lot of furni-
ture and work hard to make our customers
Happy. To help us keep on our Prosperous
ways let's celebrate with prices that are
FUN!

With Pride
Store manager
Larry Evans

20% OFF
(Our Everyday Tags)
on all wall to wall carpet jobs

40% OFF
(Our Everyday Tags)
On Every Recliner
On Our Floor

30% OFF
(Our Everyday Tags)
All furniture in
our newly refurbished
showrooms
Living Room • Bedroom
Dining Room • Dinette
Curios • Motion Sofas
Gliders • Wicker Bedding by Spring Air
Somma Waterbeds Cedar Chests
Sleepers • Chairs • Ent. Units

50% OFF
(Our Everyday Tags)
On All Lamps, Tiffanies,
Hurricane or Floor Lamps
in our store

40% OFF
(Our Everyday Tags)
On Select Discontinued
items on our floor

SEE US NOW—IT'LL BE FUN

*Before You Buy—Ask Us
We're Here to Help And We Are Bigger Than You Think.*

ROYAL FURNITURE OF EMMAUS

All Prior Sales Excluded

637 Chestnut Street
Emmaus, PA 18049

965-4134 • 965-4135

Hours: Open Mon.,
Thurs. & Fri.
9:00 am to 8:30 pm.,
Tues., Wed. & Sat.
9:00 am to 5pm

Last week

The week's news in review

Sept. 7-13

AROUND THE CITY

Blazing new trails

Bethlehem began searching for a new fire commissioner after learning that Carmen Oliver had accepted a job as fire chief in Danbury, Conn.

Mr. Oliver, 50, has spent 27 years with the Bethlehem Fire Department and seven years as commissioner. He departs at the end of the month, when a replacement is expected to be chosen from department ranks.

Suspect surrenders

Jerry Valiantinos, 24, of 2043 Kenmore Ave. in West Bethlehem, turned himself in to police on Monday, three days after police say he accidentally shot a 57-year-old woman in the chest, killing her.

Police said Mr. Valiantinos was showing off a .38-caliber semiautomatic handgun in the warehouse of his father's company when he fired two shots. One went through the wall, traveled 20 yards and struck Patricia Webster as she sat on her back porch.

Mr. Valiantinos was charged with involuntary manslaughter and a second offense for allegedly giving the gun to a friend after the shooting. Police said Mr. Valiantinos apparently was not aware he had shot someone until after he returned from a motorcycle ride following the incident.

Ice House plans

The city administration unveiled plans to turn the former Ice House on Sand Island into a performing arts center.

The historic structure would be run by a consortium made up of the city recreation department,

Touchstone Theater, Godfrey Daniels, Mock Turtle Marionette Theater and Pennsylvania Youth Theatre. The renovated building would include a theater with up to 500 seats and a smaller, 100-seat venue. About 220 performances would be staged each year.

The plan will have to be approved by city council. Some council members have voiced concern over the projects price tag, which could climb well above \$2 million.

Police, clinics moving

The Bethlehem Economic Development Corp. announced it is buying the building at 705-707 E. Fourth St. to create new homes for a police substation and city health services.

The substation and the city's immunization, HIV testing, and other clinics are currently located in rented space at 823 E. Fourth St. According to BEDCO Executive Vice President Donna Taggart, the Korpics Children's Clothing Store at 705-707 will close.

Get your money here

The city will be accepting proposals until Friday, Sept. 16, from groups seeking some of the anticipated \$1.957 million in 1995 federal Community Development Block Grant funds.

Only four groups made requests at a public hearing last week. The money goes to residents in low or moderate income areas. Seeking grants were the Pawnee Street Block Watch, the Community Action Committee of the Lehigh Valley, Valley Youth House and the Council of Spanish Speaking Organizations of the Lehigh Valley.

Groups already approved for funding totaling \$560,000 are New Bethany Ministries, Turning Point, Valley Housing Develop-

ment Corp., Allentown Neighborhood Housing Services, Center City Ministries, and AIDSNET.

IN THE SCHOOLS

PETE Net advances

A \$2 million federal grant may be in the future for the Pennsylvania Educational Telecommunications Exchange Network, a system that would allow students and teachers to communicate across the state.

U.S. Rep. Paul McHale announced this week that money for the program, known as PETE Net, has been earmarked in a House-Senate conference report on the 1995 federal Housing and Urban Development appropriations bill. He said he expects the report will be approved without controversy in the House.

PETE Net would link 15 colleges and universities across the state by video communications, to allow instructors to teach students on other campuses. Moravian College, Lehigh University and Northampton Community College are among the area schools scheduled to take part.

STAR Academy shines

A one-on-one tutoring program was praised at a banquet last week as potential corporate sponsors learned more about the partnership between business and education.

Proponents of the The STAR Academy, for "Students That Are Ready," spoke about the success of the program at a luncheon at Lehigh's Mountaintop Campus. The Saturday tutorials began five years ago with Lehigh University students acting as tutors for 20 Broughal Middle School students. Today, the program includes 100 students from Northeast and East Hills Middle Schools, as well as Holy Child, Holy Infancy and Ss. Cyril and Methodius schools.

Local businesses help support for the program, which costs \$600 a year per student.


The Romance of Roses

Always the Perfect Gift!

ROSES (Boxed) Just \$12.95

1 Dozen SWEETHEART ROSES Just \$4.95
 Wrapped with greens and baby's breath

FRESH HARDY MUMS 8" POTS \$2.95 each.



RICH MAR
FLORIST & GIFT SHOP

437-5588

BETHLEHEM
2407 Easton Ave.

ALLENTOWN
410 Tilghman St.
1708 Tilghman St.

All Items Cash & Carry

Jumper cables for the heart.



If you need to jump start a romance, call and order flowers today.

Patti's Petals, Inc.

867-8699

803 East 4th St. Bethlehem

Just a short walk from Main Street...

Glen Anthony Designs

634 N. New St
Bethlehem, PA
882-3590

Tues.-Fri. 10-5PM
Sat. 10-3PM

VISA/MC Accepted

FALL SALE

Visit our shop between
Sept. 15-Oct. 15
 and
SAVE 20%

on in-stock furniture, decorative home accessories, lamps and special gifts.*

*Applies to purchases of \$40 or more. Excludes consignment items.

HABITAT FOR HUMANITY



Bike-A-Thon & Family Festival

1 9 9 4

Pedal peaceful country roads. Catch a glimpse of fall foliage. At rides end, relax to music, food and drink.

Sunday, Sept. 25

10-Mile Ride

Here's a chance for the whole family to get into the spirit of Habitat for Humanity. The 10-mile route is relatively flat, easy and just perfect for adults and children — including kids on 20" bikes. Sag wagon and cue sheets provided. Riders under 12 years of age must be accompanied by parent or guardian.

25-Mile Ride

The 25-mile course will provide a challenge to all who attempt it. Although the route has many hills, the scenic venues along the way keep the ride an enjoyable experience. Sag wagons and two aide stations with fruit, juice and water are provided along the route. Riders under 15 years of age must be accompanied by a parent or guardian.

50-Mile Ride

For the serious cyclist, the 50-mile course traverses lots of beautiful country and has its share of hills. The scenic roads meander through Salisbury, Saucon and Milford townships. Sag wagons are provided and aide stations with fruit, juice and water are located every 10 miles.

For Info Call the Habitat Office at 867-9960

Nature

The
of Bethlehem

house finches

BY ARLENE KOCH

Prolific pair begat horde

I don't think there is a bird that I get more questions or comments about than the house finch. This bird also gets misidentified more than any other I know of because it comes to just about everyone's feeders.

House finches are abundant and sometimes seem like they're eating you out of every kind of bird seed that you put out.

While this is not literally true, I'll be the first to admit that these little 6-inch red and brown birds can get to be tiresome. They seem to lay in wait for the feeders to be stocked, and then they move in and pounce on them.

How do you get rid of them? You don't. You learn to live with them.

It may surprise some of you to know that 50 years ago there were no house finches on the East Coast. This is a West Coast bird that only ended up here because a pair of them were illegally brought cross-country.

I've read conflicting accounts of how this happened. One says the birds were released when they were discovered in a cage in a pet store and the owner set them free to avoid prosecution. Other stories recount how the finches were in someone's private possession, and this person just got tired of taking care of them and let them go. No matter how it happened, however, they are certainly here to stay.

Today, the house finch has spread inward from both coasts and now almost completely covers all areas of the United States. I personally can't think of one place where I've birded in the lower 48 that I haven't seen them.

I've had the privilege over the years of getting to know some of the people in the Lehigh Valley who had the nerve to watch birds years ago when it wasn't fashionable. Two of them, Miriam Schantz of Emmaus and Clara Luckenbach of Allentown, recently told me how excited they were in the early 50's when they received a call telling them there were house finches sighted around Kennedy Airport in New



Arlene Koch is president of the Lehigh Valley Audubon Society.

York. They and a few others traveled to the Kennedy/Riis Beach area to get their first view of this western species. It's hard for me to imagine that the hordes of house finches we have today descended from that one pair.

For reasons that I don't fully understand, a lot of people mistakenly identify the house finch as the purple finch. This may be because the purple finch is a prettier bird or because the word "purple" seems to more aptly describe the red chest of the male than the word "house" does.

The purple finch, however, is a bird of the forest and woodlands and not often seen at area feeders except during rough winters.

Its rose-red color covers more of its body than does the red color of the house finch, and it's a deeper, more intense shade.

The red of the male house finch can vary greatly, depending on the bird's diet and internal makeup. I've had birds at my own feeders that almost looked orange and sometimes even yellowish.

Occasionally a really unusual house finch will show up. Last winter Thomas Sauer of Bethlehem was nice enough to send me a picture of a white-headed bird, probably a female, that came to his feeder all winter. This partly albino finch was really strange looking, reminding me somewhat of a miniature, brownish bald eagle.

If there is one consolation to be gotten from the presence of far too many house finches in the Lehigh Valley it is that their loud, melodious warblings seem to attract other species to feeding areas.

Flocks of finches and the even more hated brown-headed cowbirds were responsible for drawing both a yellow-headed black-

bird and a dickcissel to my feeders in past years, so I obviously have learned to put up with them.

But whenever their huge numbers really get to me and I find myself thinking of how I'd like to get rid of some of them, I have a foolproof way of dealing with it. I just think of an old TV margarine commercial and picture the lady in the flowing white gown shaking her finger and saying, "It's not nice to fool with Mother Nature."

Birding notes

These days the warblers are moving through in their sometimes drab fall colors, making them often difficult to identify.

Not all, but a lot of them, molt into dull plumages that don't pinpoint what would be their normal characteristic markings. Other species also do this, but the change seems to be the most drastic in the small wood warblers, which are hard enough to find and identify under normal circumstances.

Two of the more rare warbler species which pass through our area — the Connecticut and mourning — were both seen and identified by experienced birders this past week.

Coming events

On Saturday, Oct. 22, at 8 p.m., **Hawk Mountain Sanctuary** will present Dr. Roger Tory Peterson, the dean of American birders. Dr. Peterson will talk on "The Field Guide and the Mountain: Recollections of 60 Years." This presentation will be held in the Schaeffer Auditorium at Kutztown University. Advance and reserved seats are being sold because this event is expected to sell out. Contact the headquarters at 756-6961 for further details.

PASSPORT PHOTOS... ONLY \$6.99 24 HOUR DEVELOPING

Join the C & J Photo Club! Every 7th Roll Developed FREE

TAKES ONLY MINUTES COME IN FOR TERRIFIC SERVICE GREAT PRICES. **Kodak FILM**

C & J PHOTO

643 N. New St., Bethlehem • 882-9669 9:00-5:30 M-F • 9:30-3:00 Sat.
13 E. Main St., Kutztown • 683-8333 9:30-5:30 M-F 9:30-3:00 Sat.

TCI TIRE CENTERS, INC.
America's Largest Independent Tire Dealer

BF GOODRICH MOMENTA SE
40,000 MILE WARRANTY

\$37⁰⁰	\$43⁰⁰	\$49⁰⁰
P15580R13	P18575R14	P20575R15
P16580R13	P19575R14	P21575R15
P17580R13	P20575R14	P22575R15
P18580R13	P18570R14	P23575R15
P17570R13	P19570R14	P21570R15
P18570R13	P20570R14	expires 9/22/94

PRICE INCLUDES MOUNTING, BALANCE, VALVE STEM AND TIRE DISPOSAL.
ASK FOR A FREE SAFETY INSPECTION
OTHER BFG, MICHELIN AND KELLY TIRES ON SALE.

TCI
WESTGATE MALL BETHLEHEM, PA
M-T-Th — 8:30 a.m.-8:30 p.m.
W-F-S — 8:30 a.m.-5:30 p.m.

865-6363
865-3748
(TCI 90 DAY SAME AS CASH)

GRAND RE OPENING — SEPT. 19-SUN. SEPT. 25

Young's Pharmacy

Monday	30% OFF Nat-rul & Windmill Vitamins Register to win 2 tickets to the Bill Cosby Show at The State Theatre and 4-\$25 Gift Certificates — Drawings all day long	Tuesday	20% OFF Maybelline & Cover Girl Products Register to win Several Excellent Door Prizes and 4-\$25 Gift Certificates — Drawings all day long
Wednesday	30% OFF Times Watches Cholesterol Screening — 9-11 am & 5-7pm \$8.00 1st 50 people 1/2 price \$4.00 Register to win 4-\$25 Gift Certificates — Drawings all day long	Thursday	20% OFF Entire Gift Dept. (Excluding Precious Moments) Register to win 2 Russ Teddy Bears Byron & Gregory (\$50 value each) and 4-\$25 Gift Certificates — Drawings all day long
Friday	20% OFF Entire Card & Gift Wrap Dept. (Including Christmas Ornaments) visit Balloons The Clown 6-8pm Register to win Thermoscan ear thermometer (\$100 value) and 4-\$25 Gift Certificates — Drawings all day long	Saturday	Register all week and today for Give-A-Ways: 3 Day/2 Night Stay at Tamiment Resort and Dinner for 2 at Aspen Inn (\$50 value) Meet Bobby Gunther Walsh of WAEB from 1-4pm Hot Dog & Coke 49¢
		Sunday	4 Day Caribbean Cruise Major Trip Drawing and a 3ft Big Teddy Bear (\$250 Value) see the Green Ranger/11-2pm Free Power Ranger Sticker for each Child Hot Dog & Coke 49¢

Mon.-Fri. 9-9; Sat. 9-6; Sun. 9-6 • 3708 Freemansburg Avenue, Bethlehem, PA 18017
610-866-4522

Legacy

Histories and legends

in days gone by

Prep school stood in park

Bethlehem's West Side Park is a distinctly attractive asset to our community and especially so for that neighborhood. Located directly across from Nitschmann Middle School, it clearly enhances the quality of life and aesthetics of the area. The Rose Garden is a popular location for wedding photos, and the paved rectangular area between Eighth and Ninth Avenues is the scene of summer band concerts. The park is a refreshing place with shade trees and well-kept lawns, providing that unique, quiet charm found where the beauty of nature is wisely maintained and utilized, as well as a place for the fun and frolic of children.

On the west side of Eighth Avenue where North Street meets Eighth are two matching stone, brick and concrete pillars 22 feet apart much like impressive gateposts. That is just what they were originally intended to be, not, however, for the gateway to West Side Park, but to Bethlehem Preparatory School, quite similar to the Moravian College gate located at Main and Locust



Charles G. Hafner is a retired social studies teacher who lives in Bethlehem

Streets. At the top of each post is the caption "CLASS '16". A pipe fitting at the pinnacle of each post indicates they were built to accommodate a future arch that was never installed. That gateway, the gift of the Class of 1916, remains as the sole physical remnant of the school, its only lasting material monument, occasionally arousing the curiosity of only the more observant.

Bishop Joseph Levering, in his authoritative work "A History of Bethlehem (1892)," states "The Preparatory School for Lehigh University' founded on the south side on September 16, 1878, by Prof. William Ulrich, was transferred across the river in May, 1883, into the Captain Dutch house on New Street." After the death of Professor Ulrich in 1897,



From "Bethlehem of Pennsylvania, The Golden Years 1841-1920"

The three buildings of the Bethlehem Preparatory School campus in West Bethlehem.

his principal instructor, Howard A. Foering, assumed charge of the school. In 1901, the school, then better known as Bethlehem Preparatory School, moved to a new 10-acre campus on Eighth Avenue between West Broad Street and Union Boulevard (then Route 22).

Mr. Foering was teacher and headmaster for many years. An alumnus of Lehigh University, he was an avid and faithful Lehigh sports fan and booster. His home was a large frame house located on West Broad Street and Eighth Avenue with Raspberry Alley in the rear. The site is now the location of a gas station-convenience store.

Two building were erected in 1901. The largest, the main hall, was a large rectangular building located on the north side of the walk from the North Street campus entrance at Eighth Avenue to North and Ninth Avenue, now the location of the paved band concert seating area. Another building containing a gym and swimming pool was located along Eighth Avenue where the Daughters of the American Revolution log cabin replica of the first house of Bethlehem is now located.

In 1917, a third building was added to accommodate the lower grades. It was located at Raspberry Alley and Eighth Avenue.

The athletic fields and facilities were on the northern end of the

campus along Ninth Avenue and Union Boulevard.

Mr. John M. Tuggey was headmaster in 1922 having replaced Mr. Foering in that position.

Bethlehem Preparatory School, like many other prep schools of the time, was unable to survive the late 1920s as public schools instituted expanded college preparatory programs. The Depression, of course, helped to spell the demise of private prep schools. The school closed and the City of Bethlehem acquired the campus with the buildings.

The Lower School Building at Eighth Avenue and Raspberry Alley was rented by the city and became the barracks and station of the Pennsylvania Highway Patrol in the early 1930s. By World War II, the Highway Patrol and State Police (Constabulary) were merged as the Pennsylvania State Police under the command of the State Commissioner. Bethlehem station became the headquarters of Troop D, responsible for central eastern Pennsylvania. Lt. Hilding Johnson, one of the local commanders, was later promoted to major, commandant of the State Police Training School at Hershey.

In 1948, the station/barracks was moved to the present fully complete and contained facility on Airport Road. The school building later became the Traffic House, a youth program center.

After the close of the Traffic House, the building was demolished.

The building along Eighth Avenue which housed the gym was occupied by the Bethlehem Department of Recreation. Steps and a walk leading to the front door, which faced the Rose Garden, are still there. During World War II the local draft board was located in this building. Now it is the site of the DAR Log Cabin.

The largest building, a long, imposing rectangular structure like all of the buildings, had three stories plus a partially exposed basement with windows. It paralleled Broad Street and Union Boulevard. It was never used after the school closed. With the obvious dangers inherent in a large abandoned building and no market for the deteriorating structure, the building was demolished in the late '30s.

The site was paved for ice-skating and band concerts. Originally skaters went to the basement of the Recreation Department building to put on their skates. The construction of the city rink on Illick's Mill Road pretty well ended the popularity of the West Side Park rink as a skaters' venue.

Should you indulge yourself with a quiet stroll through the park and Rose Garden, visit its monuments. They to are well worth some reflection, along with the history of the park itself.



We invite you to fall in love again.

1995 XJ Series coming soon!

J.H. BENNETT, INC.
2300 Hanover Avenue
Allentown, PA
(215) 437-6711

FALL LAWN & GARDEN VALUES

Greenbrier.

20-Lbs.

Weed & Feed
25 3-3

6⁹⁹



04-03-037 52107

AMES TRUE TEMPER

Pruning Lopper

7⁹⁹



04-03-030A 23-028
04-03-030B 120

Greenbrier.

4-Lb. New Turf

Grass Seed

7⁹⁹



04-E2-336 52354

AYKROYD HARDWARE

743 N. New Street, Bethlehem, PA

868-0421



Profiles

Faces and places

15 questions

Tom Marshall

Tom Marshall, 46, has been the Bethlehem recycling coordinator since 1991. The Highland Avenue resident spent 20 years in the Air Force and later helped count heads for the U.S. Census Bureau. He has won no friends on the American Plastics Council.

Why is your boss the director of the City Health Bureau?

To be honest, I really don't know. I couldn't tell you.

How much trash has been diverted from the city landfill because of recycling?

I have those numbers back at the office. I'll have them fax it to you. (88 million pounds from 1989 through 1992)

The city has stopped collecting buckets from residents who are including the wrong plastics in their recyclables. How has that been received?

It's been well-publicized, so we haven't had a lot of problems. It upsets some people. I

probably won't make man of the year. But, I can't take something that's going to be landfilled. The problem is the American Plastics Council, which says all plastics can be recycled. That's technically true, but there's no market for some of it. It costs \$150 to haul a bin of plastic. Some plastics in the end market would earn us seven cents a pound. We'd lose money.

One more time — what plastics can be put at curbside?

Soda jugs, milk jugs, water jugs and laundry product containers. We can't take plastic ketchup bottles, those little containers for potato salad or yogurt containers. We get lots of those.

What do the circling arrows with numbers at the bottom of plastic containers mean?

There are seven types of plastics and the numbers distinguish between them. We used to take all ones and twos, and then the market closed up. That was a mistake. Now we only take what I told you.

Again, the confusion is created by the plastics people. I come *this* close to saying they lie. And when I say, 'Look guys, you're messing us up. You have to educate people better.' They say, 'No, you have to educate people better.'

Where does it all go after its collected?

Different places. Textiles (any fabric except canvas, rugs and pillows) go down to Philadelphia. That company sells what is good to Third World nations and the rest is made into rags. Everything

clinging experience. It was my management experience.

What brought you to the Bethlehem area in the first place?

How did I end up here? I'll answer that with one word — love. My wife (Gloria Negron Marshall, executive director of Casa Guadalupe Center in Allentown) had relatives from the area and wanted to be here.

What will be the next big step in the recycling business?

The next thing that has to happen for this to work is people have to buy more recycled products. It may cost a little more, but the more the demand, the more the price will come down. But don't be misled. See this cup? It's not recycled, but it probably had the circling arrows on the box it came in. That means the *box* is recycled, not the contents.

Is the city's recycling program an environmental or economic endeavor?

When we started, I'd say it was 75 percent environmental and 25 percent economical. Now it's reversed. For example, people would love to recycle household batteries. We could do it. A bucket-full would cost us \$350 — and that's without the cost of sending it to New York.

Collecting newspapers at the curb would cost \$100,000 to \$150,000. We could do it, but I'm spending your money.

What accounts for most of the items collected?

Paper and cardboard are first, they make up about 26 percent. Then comes yard waste; about 13 to 17 percent.

What's the participation rate among residents?

We have a 92 percent participation rate on curbside collection. I'm proud that in four years we've never had to fine someone, because we can fine them for not participating. Usually when we identify them, they comply.

Is it generally the older people who give you the most trouble because they're reluctant to change?

No. It's really people my age. The older people — older people have seen war, the Depression, rationing. This is nothing to them.

Do you get many complaints?

Not many. Last winter was horrible. I got a call from a lady upset that we didn't pick up her bucket after a snowstorm. She said, 'I can't drop it off. I can't even get my daughter to school!' I said, 'Ma'am, think about what you just said.'



April Pilz

Recycling Coordinator Tom Marshall pitches in.

else — cans, glass, cardboard, paper — I sell myself for the best deal on the market. My secretary calls around and gets prices.

How is the market for recyclable materials these days?

The markets are a lot better. They've opened up in the past six months quite a bit. Cardboard — last year I had to pay to get rid of it. Now we're making \$70 a ton. Last year, overall, we made \$32,000 on straight selling. So far this year we've made about \$36,000.

How did a Virginia boy like yourself end up sorting trash in the Christmas City?

A lot of people ask me that. I spent 20 years in the United States Air Force. I retired a first sergeant in 1989. Then I ran the 1990 census for Lehigh, Northampton and Berks counties. I saw an advertisement in the newspaper for this job and thought, 'That would be interesting.' I wasn't hired for my recy-

THE WOOD DOCTOR

837-7050

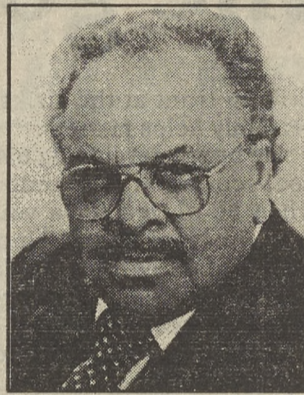
FURNITURE

- Repair
- Reglue
- Stripping
- Refinishing
- Chair Caning



Route 512, Bath, PA • Mon.-Fri. 8-5 • Sat. 8-12

...you are cordially invited to attend a private seminar on:



ATTY. PEDRO BOONE

THE LIVING TRUST REVOLUTION:

WHY AMERICA IS ABANDONING WILLS AND PROBATE

the seminar will be held

Tuesday, September 27, 1994

2-4 P.M. or 7-9 P.M.

Bethlehem Area Public Library (lower level)
11 West Church St., City Plaza, Bethlehem, PA

for RSVP call (610) 866-7204

Although the seminar is free, reservations are required

The Competitive Edge is Computer Skills



All These Courses Included In Our Business Operation Program

- WORDPERFECT
- WINDOWS
- LOTUS 1-2-3
- dBASE IV
- COMPUTERIZED ACCOUNTING

"TRAIN FOR A BETTER JOB IN 9 MONTHS"

*Must Have High School Diploma or GED

START CLASSES THIS MONTH



National Education Center®
Allentown Business School
1501 Lehigh Street, Allentown

Accredited Member, AICS

©Nat'l. Educ. Corp.

791-5100

Sports

Events and Standings

highlight

Freedom striker goes for the goal

BY TOM HARPER

The Freedom High School boys' soccer team has gotten off to one of its best starts in recent memory, posting a 5-0 record heading into Tuesday night's matchup against Liberty.

Leading the fast start for the Patriots has been the performance of senior Erik Bernotas, the 5-foot-10-inch, 190-pound offensive weapon who is already the school's all-time leading scorer.

The leading goal scorer for Freedom this year with eight goals, Erik possesses the ultimate scorer's mentality: Have ball, will shoot — and often. "I love to score," he said, his voice raising in excited tone. "The greatest feeling in the world is when I beat a defender and I hit the ball into the net."

That scoring zeal has helped him to register 76 career goals. In addition, he also has accumulated 106 total points (goals plus assists), 53 points shy of the school record.

"When I'm out on the field, wherever I am, I have a sense of where the opponent's goal is," he said. "I could have my back turned or my body angled away. But just when I get the ball, I'm looking for the goal."

Breaking records is on Erik's soccer agenda this season, but an even greater goal for him is a return trip to the PIAA state playoffs, where Freedom lost in the opening round last year to eventual champion Great Valley.

He said his team has the caliber of players to contend again this season. "We really don't have any weak points. Our midfield and our defense can control a game, and we're very strong up front."

Having a prolific scoring threat like

Erik up front at the striker position certainly helps matters.

He began developing his knack for goal-scoring at the tender age of 4, when he played for a youth soccer team in New Jersey. Upon moving with his family to Pennsylvania at 6, he started playing in the Greater Bethlehem Soccer League.

At such a young age he learned just how wonderful — and how profitable

Freedom career, he continues to play virtually year-round as a member of a state-select team and the Warrington Soccer Club.

His kicking talents do not stop at soccer, however. He is the placekicker for the Freedom football team, and has connected on two extra-point attempts this season. Though he said he has hit 57-yard field goals in practice, his lone game attempt, a 47-yarder, fell short. "I just didn't get enough of it," he said matter-of-factly.

His preference is still soccer, a sport his father wanted him to play instead of football. He is the captain of the Freedom squad this year, a role which has "helped me to mature as a person."

He credits his parents for being a strong motivational force behind his athletic career, as well as his academic career. It is his intense pursuit of academic excellence that opens your eyes as much as his penchant for scoring does. His cumulative grade-point average is a 4.167, and he finished his junior year ranked 24th out of 320 students. This year, four honors classes are on his schedule.

"I'm looking for the school that's the best academically that also has a solid soccer program," he said of his collegiate ambitions, adding that among his choices are schools in the Ivy League and the Atlantic Coast Conference, highly regarded as the



April Pilz

Less than half way through his senior year, Erik Bernotas is Freedom's all-time leading scorer.

— scoring goals could be. "I'm stronger kicking with my right foot. But my dad, when I was younger, tried to get me to kick with my left foot also. He would give me a quarter for every time I scored a left-footed goal."

Erik then moved on to play six years with the Bethlehem Stars, a team that has undergone several name changes. He played alongside some of the best soccer players in the Lehigh Valley today, including local standouts Tim Sahaydak and Trevor Hirst. "We had a great team. We just didn't know it back then," he said.

People know now. In addition to his

nation's best soccer conference.

One could argue that the Bernotas family is quickly becoming a soccer powerhouse in its own right. Erik's sister Danielle is a sophomore on the girls' soccer squad, and looks to be prominent in Freedom's success for the next three years.

Although soccer is in their blood, the jealousy isn't. "Soccer-wise, we were never competitive against each other. We're more likely to compete for the phone," he said, laughing.

The phone seems to be the only battle Erik Bernotas has yet to conquer.

COMING UP

THURSDAY

SOCCER

4 p.m., Freedom at Phillipsburg

FRIDAY

FOOTBALL

7:30 p.m., Liberty at Allen; Emmaus at Freedom; Notre Dame at Catasauqua

GOLF

8 a.m., Lehigh in Yale Tournament

TENNIS

3 p.m., Lehigh at Fordham

3:15 p.m., Freedom at Central Catholic

VOLLEYBALL

4 p.m., Freedom girls at Emmaus

6 p.m., Lehigh in Virginia Commonwealth Tournament

FIELD HOCKEY

4 p.m., Freedom at Liberty

SATURDAY

FOOTBALL

1 p.m., Delaware Valley at Moravian

1:30 p.m., Bethlehem Catholic at Salesianum

7 p.m., Lehigh at Buffalo

CROSS COUNTRY

10 a.m., Lehigh in Penn St. Invitational

SOCCER

10 a.m., Freedom at Dieruff

2 p.m., Colgate at Lehigh

FIELD HOCKEY

11 a.m., Lehigh at Colgate

GOLF

8 a.m., Lehigh in Yale Tournament

VOLLEYBALL

8 a.m., Freedom in Quakertown Tournament

6 p.m., Lehigh in Virginia Commonwealth Tournament

SUNDAY

GOLF

8 a.m., Lehigh in Yale Tournament

FIELD HOCKEY

1 p.m., Lehigh at Cornell

MONDAY

TENNIS

3:15 p.m., Pocono Mountain at Freedom

VOLLEYBALL

4 p.m., Freedom at Whitehall

FIELD HOCKEY

4 p.m., Easton at Freedom

SOCCER

4 p.m., Pleasant Valley at Freedom

TUESDAY

TENNIS

3 p.m., West Chester at Lehigh

3:15 p.m., Phillipsburg girls at Freedom

VOLLEYBALL

7 p.m., Bucknell at Lehigh

GOLF

8 a.m., Lehigh in Yale Tournament

SOCCER

4 p.m., Whitehall at Freedom

CROSS COUNTRY

4 p.m., Phillipsburg, Dieruff and Emmaus at Freedom

WEDNESDAY

GOLF

1 p.m., Navy, Hofstra, Loyola (Md.) and Lehigh at Saucon Valley C.C.

VOLLEYBALL

6:15 p.m., Easton at Freedom

GOLF

8 a.m., Lehigh in Yale Tournament

SOCCER

4 p.m., Lehigh men at Brown; Lehigh women at Seton Hall

FIELD HOCKEY

6:15 p.m., Phillipsburg at Freedom

school diary

Three Freedom High School students have been chosen for the "Call to Excellence" program at Muhlenberg College this fall. **Joseph Hendrick, Benjamin Hendrick and Peter Haytko** will be taking "Calculus II" as part of the program, which allows students the opportunity to attend college-level courses during their senior years.

In addition, **Andrew Miller**, of Moravian Academy, will be taking "Differential Equations," as part of the "Call to Excellence" program.

St. Luke's Hospital and the eastern Pennsylvania chapter of the Arthritis Foundation are co-sponsoring a **self-help course on arthritis and the benefits of exercise**. The course will be presented for five consecutive Mondays beginning Sept. 19, from 1:30 to 3:30 p.m. The cost is \$15. For more information or to register, call 954-4781 or 954-4690.

Moravian College professor **Santo D. Marabella** recently spoke at the Seventh World Congress of Social Economics in Verona, Italy. Dr. Marabella, assistant professor of economics and business, presented research on the relationship between the U.S. government and not-for-profit organizations. The conference's goal was to explore how capitalist

nations can best pursue economic efficiency, democracy, social justice and human dignity.

The **Swain Association** will hold a "Meet the Faculty" night and information fair on Wednesday, Sept. 21, at 6:30 p.m. The information fair will include Swain School activities, fund-raisers, a Holiday House tour, student councils and sports teams.

The **Lehigh Valley Writing Project**, held at the Penn State Allentown Campus in Fogelsville, will present two Strategies Workshops aimed at addressing the needs of today's teachers.

"Analytical Assessment" is designed to give teachers a clear set of writing standards and teaching strategies and provide a model for assessing student work. "Process Writing," is for K-12 teachers who want to integrate writing into the curriculum successfully.

For a brochure and registration form, call the college at 258-5058.

A course for day-care providers and early-childhood educators on how to accommodate children with disabilities will be offered this semester at Northampton Community College.

ADA & Early Childhood Education will discuss responsibilities under the Americans With Disabilities Act and practical problem-solving approaches. It

will be held from 6 p.m. to 9 p.m. each Monday from Sept. 26 through Oct. 24. Call 861-5472 for more information.

Northampton Community College is now accepting fall semester registration for its **Nursery School Program** at the Child Development Center. The program is open to children 3 and 4 years old. Time slots are available Mondays through Fridays, from 9 a.m. to 1:30 a.m., and from 1:30 p.m. to 4 p.m. The fee is \$3.10 per hour. To register, call 861-5477.

RUTHHART SMITH CORP.

Insurance-Bonding

925 W. Broad St. • P.O. Box 4085 • Bethlehem, PA 18018

ATTENTION:

Looking For Automobile Insurance?

We write automobile insurance regardless of your past driving record.

Contact us at 868-0666 for a quotation.

city diary

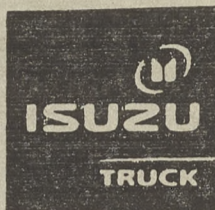
A limited number of exams for the **early detection of prostate cancer** will be available at St. Luke's Hospital on Sept. 20, 21 and 22 as part of National Prostate Cancer Awareness Week. The exams consist of a digital rectal examination and a prostate-specific antigen (PSA) blood test, each of which takes about one minute to perform. Men over 50 are at risk of developing prostate cancer. To make an appointment, call 954-3581.

On Saturday, Oct. 1, Edgeboro Moravian Church will hold their annual **Fall Flea Market**. Doors open at 9 a.m. through 1 p.m. Buyers will find great deals on children's toys and clothes, jewelry, collectibles, glassware, household items, books, and much more. Lunch and baked goods are also available for purchase. Edgeboro Moravian Church is located at

645 Hamilton Ave. at the corner of Hamilton Avenue and Elm Street. For more information, call 866-8793.

Tickets are on sale for a **"Roast and Toast the Mayors of Bethlehem"**: Gordon Mowrer, Paul Marcincin and Ken Smith. The mayors will be honored for their support of the Bethlehem Senior Citizens' Council on Friday Oct. 7, at the Holiday Inn, Bethlehem. The fund-raising dinner will benefit the programs and services of the council. Tickets are \$50 per person or \$85 per couple; call 867-4233.

Neighborhood Walk Days are being held on Wednesdays in September and October. Bethlehem residents are encouraged to walk to neighborhood restaurants and merchants on Wednesdays to promote a thriving business community, prevent crime and improve fitness.



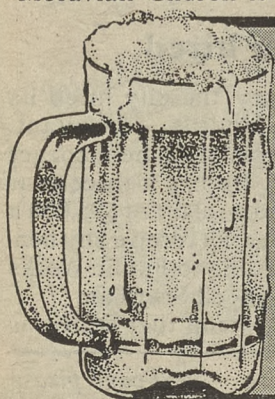
GAS or DIESEL
now is the time to put an
ISUZU or DODGE
in your **FLEET** operation



PRICED for immediate delivery

- New 1994 **ISUZU** NPR/NE1 Diesel Dump w/Bak-Pak 5 spd. **\$27,499***
- New 1994 **ISUZU** NPR/GD1 Gas Dump w/Bak-Pak AT **\$25,899***
- New 1994 **ISUZU** NPR/GD1 Gas Dump w/Bak-Pak AT **\$25,899***
- New 1994 **ISUZU** NPR/GD3 Gas 16' Dry Van AT **\$24,199***
- New 1994 **ISUZU** NPR/NF2 Diesel 14' Dry Van AT **\$26,299***
- New 1995 **ISUZU** FTR/UK3 Diesel 20' Dry Van AT **\$45,899***
- (9) New 1995 **ISUZU** NPR's Chassis/Cab available from **\$19,699***
- New 1994 **DODGE** 3500 Dump Gas w/Bak-Pak **\$23,999***
- New 1994 **DODGE** 3500 Dump Diesel **\$26,799***
- New 1994 **DODGE** 3500 Dump Diesel 4x4 **\$30,299***
- New 1994 **DODGE** 3500 Dump Gas 4x4 **\$26,299***
- New 1994 **DODGE** 3500 Stake Gas **\$21,399***
- New 1994 **DODGE** 3500 Stake/Dump Diesel **\$27,599***
- New 1994 **DODGE** 2500 Utility Diesel **\$25,899***

*Plus taxes, license and titling fees.



BEER TO GO!
OPEN 7 DAYS & HOLIDAYS

Largest Selection of Beers from around the world and all of the Micro-Breweries.

Buy as little as one bottle!

Also serving specialty sandwiches and more (try our shish-kabob!)

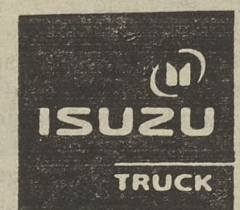
SIX PACK SHOP
1635 Broadway St., Bethlehem
865-0500



ISUZU TRUCK of the **LEHIGH VALLEY**
a division of Keystone Dodge, Inc. - 2350 Lehigh St.

791-1900

For appointment call John Taylor or John Fainor



cover story



April Pilz

Workmen lay down lining for a new section of the landfill in Lower Saucon Township.

City re-enters trash business

From the cover

"I think it was the only option we were left with," Mayor Ken Smith recalled this week. "We would have preferred to sell. At one point we decided we would prefer to not be in (the landfill business). But if you look at the dollars involved, the only option left was to open it and regain some revenue."

To close the landfill and cover it in an environmentally safe manner would have cost up to \$18 million according to city officials. Without the revenue from the landfill, the cost would have been picked up by the taxpayers. Borrowing \$30 million to expand the site was more costly up front, but at least it would end up generating revenue for an about 18 more years, they said.

Two years later, some members of council privately say that it wasn't worth the trouble. There are looming court battles and the ever-present DER to be dealt with.

"There is some grumbling, sure," said Councilman Thomas Mohr, who was a first-year elect-



April Pilz

Chris Campman, the landfill's new manager.

ed official when council was considering the matter. "This city has always had a tough time trying to make a decision to stay in the trash business. Well, we're in."

And the city needs to attract enough haulers to its landfill to pay for its \$30 million cleanup and expansion.

"I said many years ago that the landfill was getting to be a liabili-

ty and we should try to sell it. But new DER regulations made it impossible," said Councilman Jack Lawrence.

The city hired the Smith-Barney investment firm to come up with a list of possible buyers. Brochures were sent out. But the cost was too high for what is a relatively small landfill in the waste management business.

"It was like DER was standing at the gate with the keys in one hand and a bill for \$30 million in the other and saying, 'You want to buy this?'" one city administrator recently reflected.

Like Mr. Mohr, Councilman James Delgrosso said the city had no choice but to bite the bullet.

"Had we closed the property at that time, we still would have had to cap it, which was costly. At least this way we'd have revenue coming in," he said.

History of dumping

Fifty years ago, Bethlehem was dealing with its trash like most other municipalities. It dumped it wherever it could.

It found farmers willing to lease part of their land as dump sites. It packed refuse and ash into rat-infested ditches. It stuffed waste into ore holes along Cloverleaf Street and Saucon Park, according to newspaper accounts at the time.

The original 83.9 acre tract was purchased from a farmer in March 1942. More property would be bought through the years. Today, the city owns 400 acres in Lower Saucon Township, half of it used as a buffer between the dump and the township.

Of the remaining 200 acres, about 88 contain, or will contain, trash.

The landfill is split into four parts: the original site (31 acres); Phase I (10 acres); Phase II (14 acres); and the soon-to-be-opened Phase III (33.4 acres).

Along with the construction of

Phase III, the city will be capping the original site, part of Phase I, and all of Phase II. Several acres of old fill will be lined and covered with new trash.

Last city landfill

There are 45 licensed landfills in Pennsylvania. Thirty of them are privately owned, such as Grand Central Sanitation in Plainfield Township and Chrin Brothers in Williams Township.

Fourteen are owned by counties. Berks and York counties each own landfills. Bradford, Sullivan and Tioga counties together run a site in Bradford County, a partnership approach that is not uncommon.

The last landfill on the list belongs to Bethlehem. (Allentown sends its trash to Lackawanna County, and Easton has a contract with Grand Central Sanitation.)

The number of remaining landfills reflects the new complexity of waste management. At one time, before environmental regulations, there were more than a thousand landfills in the state. Most opened at a time when all it took to open a landfill was some land and a tractor and not much knowledge in environmental engineering. The city didn't even apply for its first landfill permit until 1981.

Trash meant cash for landfill operators, including the city. Until 1991, it was the third largest revenue source for the city after real estate and income taxes.

Mayor Smith's 1989 budget relied on \$2.9 million in landfill revenue, and when less trash came in, the budget began to come apart. The city was faced with the competing needs of bringing in more trash — and revenue — and preserving the landfill for as long as possible.

The city has since moved the landfill into a separate enterprise fund along with the water and sewage systems and golf course. It's no longer tempted to attract trash to balance the general fund budget, but there's still the \$30 million bond.

The last time the landfill was expanded — by 25 acres in the late 1980s — the city borrowed \$7.8 million and is still paying it off.

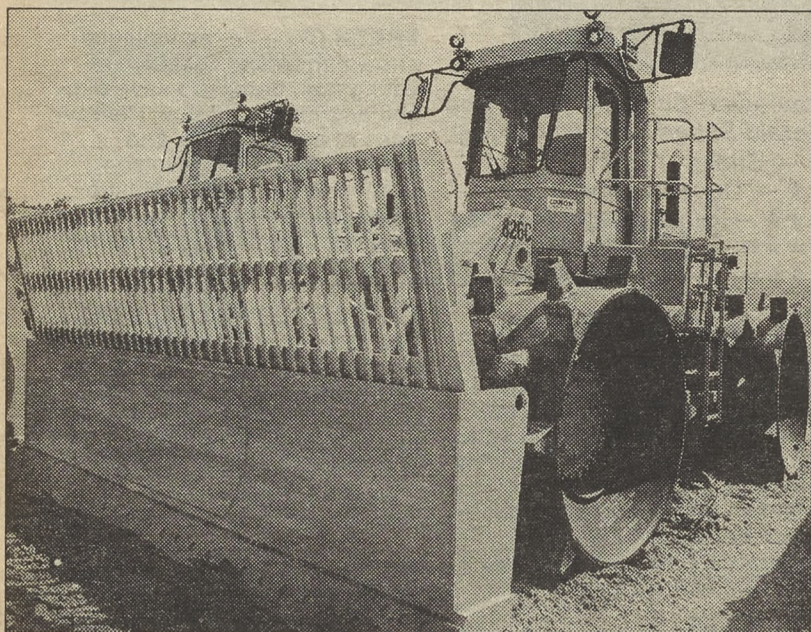
The current landfill budget includes \$24.3 million for operating expenditures and \$20.5 million in capital spending. Work on next year's budget is under way, according to Director of Budget and Finance Dennis Reichard.

Manager hired

In January, the city hired its longtime landfill consultant, Chris Campman, to be manager of the site. He has a three-year contract and a salary of \$95,000 a year but does not receive any benefits, according to Public Works Director Wendell Sherman.

"He's a person that DER was

Next page, please



April Pilz

The reopened landfill requires new equipment, like these compactors.

From previous page

acquainted with. They wanted someone they had confidence in," said Mr. Sherman.

Mr. Campman, who travels from Lansdale each day, said the city is doing its best to work with DER and its neighbors with new equipment and manpower. He said today's landfill operation is "a whole new ball game."

"When I first started in 1972 in Montgomery County, they had the first lined facility in the state," he said.

Anita Linden, a member of the Bethlehem/Lower Saucon Township Joint Landfill Committee, said she likes Mr. Chapman, but the city hasn't fully addressed the pollution leaking from the original landfill.

"Before a guest is welcomed back to my house they clean up the mess they made the first time," she said.

There will have to be money set aside for lawyers. The city has retained attorney Michael Kline for an anticipated court battle with one of its two dozen haulers, Grand Central Sanitation, owners of the Plainfield Township landfill.

Pennsylvania's Act 101, which mandated recycling and solid waste management, allowed counties to designate the landfills that haulers must use. Bethlehem —

the city with the landfill — was permitted to designate its own. Grand Central has threatened to challenge the city's "flow control" ordinance, citing a Supreme Court ruling that sided with a hauler in New York state.

Councilman Lawrence said he's confident the city will attract enough haulers to the site.

"We've been told by many haulers that they will bring their waste to our landfill," he said.

The city also faces a legal hassle with Hellertown. The borough had a contract to send its trash to Bethlehem's landfill, but signed another agreement with Chrin when the city site was closed in 1991.

It still has business pending before DER, as well. It's awaiting word on a permit filed to accept nonhazardous industrial — or residual — waste.

The city is counting on taking in 83 tons of residual waste each day to help raise revenue, according to Mr. Sherman. It also needs to attract 210 tons of residential and commercial trash and 57 tons of sludge from the sewage treatment plant every day.

The city would charge haulers \$52.50 per ton to dump in the landfill. City council recently lowered the fee from \$57 per ton to be more competitive. Grand Central Sanitation charges Northampton County customers \$55.20 per

ton to dump household waste at its landfill, according to a company spokeswoman.

"If we get all the waste we can, then we conceivably could lower the fee again," said Mr. Sherman. "Of course, the more trash you get, the shorter the life of the landfill."

What's next?

What happens when all of the new landfill section is stuffed with trash?

Incinerator technology may progress to the point that Bethlehem residents may accept a waste-to-energy plant, said Mr. Lawrence of an idea that failed to win approval in 1989.

There's always landfill mining, in which the dump is dug up again and sifted for recyclable materials, which are removed, creating space. It is currently too costly a process, said Mr. Sherman.

Or the city can expand again. Mr. Sherman said there are 30 to 40 acres of available land on the western side of the site.

NOTICE

TO ALL BELL ATLANTIC-PENNSYLVANIA, INC. TELEPHONE CUSTOMERS WHO USE AUTOMATIC DIALING AND ANNOUNCING DEVICES

Three residential telephone customers of Bell Atlantic-Pennsylvania, Inc. have filed complaints with the Pennsylvania Public Utility Commission regarding Automatic Dialing and Announcing Devices ("ADADs").

These complaints ask for blocking of incoming telemarketing calls made with ADADs.

The caption of the proceeding is *Lawler, Weiner and Haver v. The Bell Telephone Company of Pennsylvania*, Docket Nos. C-00913593, C-00913594, and C-00913599.

Please write to the following, if you would like to participate in this case:

Secretary
PA Public Utility Commission
P.O. Box 3265
Harrisburg, PA 17105-3265

Bell Atlantic
THE HEART OF COMMUNICATION™

© 1994 Bell Atlantic

"I went because they were affordable. I stayed because they're wonderful."



I first went to Planned Parenthood because I really couldn't afford a gynecologist. I was young. And nervous. And didn't know what to expect. But now I can afford to go anywhere. And you know what? I still go to Planned Parenthood.

From my very first visit, I felt they sincerely cared about me. They took the time to know me and answered all my questions in plain talk. Every time I go, they're as kind and understanding as ever.

I also feel their medical staff is professional, knowledgeable and very up to date. They're extremely sensitive to a woman's special medical concerns, and everything is kept confidential. I'm glad they offer such a wide range of services. As far as I'm concerned, Planned Parenthood is like family and will always be an important part of my health care.

◆◆ Bring this ad in for a **FREE** Pap Test ◆◆ at the time of your annual exam

For an appointment, call toll-free 1-800-230-PLAN

Planned Parenthood®

Rx for Savings

Banach's Domp-Sensitive Eye Soln 1.0oz \$2.19
 Cleaners Tablets 16ct \$3.69 - Daily Clean Drop 1oz \$3.99
 Secret Roll-on 1.7oz \$1.99 - Norema skin cr 10oz \$2.99
 Aloe Tablet / Caplet 29's \$2.79 - Caldesene 4oz \$2.99
 Banana Boat AfterSun \$3.49 - Auro-dri 1oz \$1.99
 Isopropyl Alcohol 16oz 44¢
 Semodine Toothpaste 4oz \$3.49
 G-viel deg Cramps 50's \$16.99
 Tylenol Allergy/Sinus 24 \$3.99
 Back to School Supplies

HUNSICKER'S PHARMACY
 1061 Seneca St. • Bethlehem • 866-6737
 Hours: Mon.-Fri. 9-8, Sat. 9-6, Sun. 9-3

Movies

Times and trailers

showtimes

All shows and times are subject to change, so please call the theater to confirm screenings.

BEGINNING FRI. 9/16

AMC Four

25th St. Shopping Center, Palmer Township
252-2029
Adults \$4.75, matinee \$3.50, twilight \$2.50

THE LION KING (G) Fri. 5:30, 7:30, 9:30; Sat. 1:30, 5:30, 7:30, 9:30; Sun. 1:30, 6, 7:50' Mon.-Thurs. 6, 7:50
TRIAL BY JURY (R) Fri. 5:20, 7:50, 10:10; Sat. 1:50, 5:20, 7:50, 10:10; Sun. 1:50, 5:50, 8:10; Mon.-Thurs. 5:50, 8:10
NATURAL BORN KILLERS (R) Fri. 5, 7:40, 10; Sat. 1:40, 5, 7:40, 10; Sun. 1:40, 5:30, 8; Mon.-Thurs. 5:30, 8
CAMP NOWHERE (PG) Fri. 5:10; Sat. 2, 5:10; Sun. 2, 5:40; Mon.-Thurs. 5:40
COLOR OF NIGHT (R) Fri.-Sat. 7:20, 9:50; Sun.-Thurs. 7:45

AMC Plaza Theatre

Whitehall Mall, Whitehall
264-4811
All seats \$1

TRUE LIES (R) Fri. 4:30, 7:20, 10:15; Sat. 1:15, 4:20, 7:20, 10:15; Sun. 1:15, 5, 8; Mon.-Thurs. 5, 8
I LOVE TROUBLE (PG) Fri.-Sat. 5, 8; Sun. 12:30, 8:15; Mon.-Thurs. 8:15
JURASSIC PARK (PG-13) Fri. 10:30; Sat. 2, 10:30; Sun. 3, 5:40; Mon.-Thurs. 5:40

AMC Tilghman 8

Tilghman Square Shopping Center, South Whitehall Township
391-0780
Adults \$5.50, twilight and matinee \$2.75

TIME COP (R) Fri. 5:40, 8, 10:30; Sat.-Sun. 1:30, 5:40, 8, 10:30; Mon.-Thurs. 5:40, 8, 10:30
TRIAL BY JURY (R) Fri. 4:50, 7:10, 9:30; Sat. 1:20, 4:50, 7:10, 9:30; Sun. 1:20, 4:50, 8, 10:10; Mon.-Thurs. 5:50, 8, 10:10
THE NEXT KARATE KID (PG) Fri. 5:10, 7:40, 10; Sat. 1:50, 5:10, 7:40, 10; Sun. 1:50, 5:10, 7:45, 10; Mon.-Thurs. 5:30, 7:45, 10
MILK MONEY (PG-13) Fri. 5, 7:20, 9:40; Sat. 1:40, 5, 7:20, 9:40; Sun. 1:40, 5, 8:10, 10:20; Mon.-Thurs. 5:50, 8:10, 10:20
NATURAL BORN KILLERS (R) Fri. 5:30, 8:10, 10:40; Sat. 1:10, 5:30, 8:10, 10:40; Sun. 1:10, 5:30, 7:50, 10:10; Mon.-Thurs. 5:30, 7:50, 10:10
CLEAR AND PRESENT DANGER (PG-13) Fri. 4:30, 7:30, 10:20; Sat. 1, 4:30, 7:30, 10:20; Sun. 1, 4:30, 7:45, 10:30; Mon.-

Thurs. 5:10, 7:50, 10:30
THE MASK (PG-13) Fri.-Sat. 5:20, 7:50, 10:10; Sun. 5:20, 8:15, 10:20; Mon.-Thurs. 5:40, 8:15, 10:20
THE LION KING (R) Fri. 5:20, 7:20, 9:20; Sat. 2, 5:20, 7:20, 9:20; Sun. 2, 5:20, 8:15, 10; Mon.-Thurs. 6, 8:15, 10
THE LITTLE RASCALS (PG) Sat.-Sun. 2

The Boyd

30 W. Broad St., Bethlehem
866-1521
Adults \$5; \$3 before 6 p.m.
Call for shows and times

CLEAR AND PRESENT DANGER (PG-13) Fri. 7, 9:25; Sat. 1:30, 7, 9:25; Sun. 2, 4:25, 7, 9:25; Mon.-Thurs. 7

County Theater

20 E. State St., Doylestown
348-3456
Adults \$6, members \$4

EAT DRINK MAN WOMAN (NR) Fri 7; Sat.-Sun. 2, 4:30, 7; Mon.-Thurs. 7
RED ROCK WEST (NR) Fri. 9:30; Sat.-Sun. 4:15, 9:30; Mon.-Thurs. 9:25
MI VIDA LOCA (R) Fri. 7:15, 9:15; Sat.-Sun. 2:15, 7:15, 9:15; Mon.-Thurs. 7:05, 9:05

General Cinema

Lehigh Valley Mall, Whitehall
264-7577
Adults \$6.25, \$4.50 before 6 p.m.

A GOOD MAN IN AFRICA (R) Fri. 2:45, 5, 7:20, 9:30; Sat.-Sun. 1:15, 3:15, 5:15, 7:20, 9:30; Mon.-Thurs. 2:45, 5, 7:20, 9:30
BARCELONA (PG-13) Fri. 2:20, 4:30, 7:10, 9:40; Sat.-Sun. 1:45, 4:15, 7:10, 9:40; Mon.-Thurs. 2:20, 4:30, 7:10, 9:40
FRESH (R) Fri.-Thurs. 2:30, 5, 7:30, 10
TIMECOP (R) Fri. 3:15, 5:30, 7:45, 10; Sat.-Sun. 1, 3:15, 5:30, 7:45, 10; Mon.-Thurs. 3:15, 5:30, 7:45, 10
THE MASK (PG-13) Fri.-Thurs. 2:15, 4:45, 7:15, 9:45
FORREST GUMP (PG) Fri. 3, 7, 10; Sat.-Sun. 1, 4, 7, 10; Mon.-Thurs. 3, 7, 10
CLEAR AND PRESENT DANGER (PG-13) Fri. 3:15, 7:20, 10:15; Sat.-Sun. 1:30, 4:30, 7:20, 10:15; Mon.-Thurs. 3:15, 7:20, 10:15
NATURAL BORN KILLERS (R) Fri.-Thurs. 2, 4:40, 7:15, 9:50
Midnight shows, Friday and Saturday: **THE CROW (R)**, **WOLF (R)**, **BEVERLY HILLS COP III (R)**, **TIMECOP (R)**, **ROCKY HORROR PICTURE SHOW (R)**, **ABOVE THE RIM (R)**

19th Street Theater

527 19th St., Allentown
432-0888
WHITE (NR) Fri.-Sat. 7:15, 9:15; Sun. 2, 7:30

THE WONDERFUL HORRIBLE LIFE OF LENI RIEFENSTAHL (NR) Mon.-Thurs. 7:30

The Roxy

2004 Main St., Northampton
262-7699
All tickets \$1
Call for times

BLACK BEAUTY (G) Fri.-Sat. 7; Sun. 2 @Listings body copy:
TRUE LIES (R) Fri.-Sat. 9; Sun.-Thurs. 7

United Artists, Allentown

4th & Hamilton Sts. Allentown
437-6065
Adults \$5.50, \$3.75 before 6 p.m.

CORRINA, CORRINA (PG) Fri. 7:05, 9:25; Sat.-Sun. 4:30, 7:05, 9:25; Mon.-Thurs. 7:05, 9:25
COLOR OF NIGHT (R) Fri. 9:15; Sat.-Sun. 4:15, 9:15; Mon.-Thurs. 9:15
IN THE ARMY NOW (PG) Fri. 7; Sat.-Sun. 2:05, 7; Mon.-Thurs. 7
THE NEXT KARATE KID (PG) Fri. 7:15, 9:20; Sat.-Sun. 2:20, 4:25, 7:15, 9:20; Mon.-Thurs. 7:10, 9:15
MILK MONEY (PG) Fri. 7:20, 9:30; Sat.-Sun. 2:10, 4:20, 7:20, 9:30; Mon.-Thurs. 7:20, 9:30
CAMP NOWHERE (PG) Fri. 7:10, 9:10; Sat.-Sun. 2:30, 4:35, 7:10, 9:10; Mon.-Thurs. 7:10, 9:10

United Artists, Easton

175 S. 3rd St., Easton
253-2823
Adults \$5.50, \$3.75 before 6 p.m.

FORREST GUMP (PG) Fri. 7:10, 9:50; Sat.-Sun. 1:10, 4:10, 7:10, 9:50; Mon.-Thurs. 7:10, 9:50
TIMECOP (R) Fri. 7:30, 9:30; Sat.-Sun. 1:30, 3:30, 5:30, 7:30, 9:30; Mon.-Thurs. 7:30, 9:30
ANDRE (PG) Fri. 7:20; Sat.-Sun. 1:20, 3:20, 5:20, 7:20; Mon.-Thurs. 7:20
THE MASK (PG-13) Fri.-Thurs. 9:20
MILK MONEY (PG-13) Fri. 7:15, 9:15; Sat.-Sun. 1:15, 3:15, 5:15, 7:15, 9:15; Mon.-Thurs. 7:20, 9:40
CLEAR AND PRESENT DANGER (PG-13) Fri. 7:20, 10; Sat.-Sun. 1:30, 4:20, 7:20, 10; Mon.-Thurs. 7:20, 10
THE NEXT KARATE KID (PG) Fri. 7, 9; Sat.-Sun. 1, 3, 5, 7, 9; Mon.-Thurs. 7, 9

Colleges

Lehigh University and Moravian College

SIRENS (R) Thurs. 7, 9:15, Whitaker Lab Auditorium, Lehigh University, \$2, 758-4739.

JURASSIC PARK (PG-13) Fri.-Sat. 7:45, 10:15, Packard Lab Auditorium, Lehigh University, \$2, 758-4739.

TALES FROM THE GIMLI HOSPITAL (NR) Tues. 7, Whitaker Lab Auditorium, Lehigh University, \$2, 758-4739.

JOURNEY OF HOPE (NR), a Kurdish family leaves its home in Turkey in search of a better life in Switzerland, Fri. 8, Prosser Auditorium, Monocacy and Locust Sts., Moravian College, donation, 861-1365.

trailers

Reviewed by Dave Ross and Gerald Scharf. The ratings key:

★ — Stinks
★★ — Doesn't stink
★★★ — Worth the ticket price
★★★★ — Worth seeing twice
★★★★★ — Drop-dead classic

NEW THIS WEEK

TIMECOP (R) — Kick-boxing box office kicker Claude Van Damme flexes jaw muscles in this time-travelling tale of a cop who sets off across time to save his lovely wife (Mia Sara) from an evil politician (Ron Silver) responsible for her death.
General Cinema, Lehigh Valley Mall; United Artists, Easton

CONTINUING

A GOOD MAN IN AFRICA (R) — Sean Connery is an eccentric doctor who influences a disgruntled diplomat in Africa for the better. Also stars Louis Gossett Jr., John Lithgow, Colin Friels, Diana Rigg, and Joanne Whalley-Kilmer. Directed by Bruce Beresford ("Driving Miss Daisy").
General Cinema, Lehigh Valley Mall

BARCELONA (PG-13) — A smart and funny film that follows the exploits of two witty — and often despised — cousins in a sultry, beautiful seaport town in Spain. Taylor Nichols and Chris Eigeman play the Navy officer and salesman duo, who come to some surprising and hilarious conclusions about love, beauty and disco.
General Cinema, Lehigh Valley Mall

CLEAR AND PRESENT DANGER (R) — Harrison Ford stars in this political thriller about a shadow government that can order military strikes where and whenever it wants. But this time, something goes dreadfully awry.
AMC Tilghman 8, South Whitehall; The Boyd, Bethlehem; General Cinema, Lehigh Valley Mall; United Artists, Easton

COLOR OF NIGHT (R) — Bruce Willis goes for erotic thrills instead of pyrotechnic ones in this thriller about a psychologist who takes over the therapy group of a murdered friend. Jane March, Ruben Blades and Lesley Ann Warren are co-stars.
AMC Four, Palmer; United Artists, Allentown

CORRINA, CORRINA (PG) — After the death of a little girl's mother, her father finds a nanny to help fill some of the gaps left behind, but she ends up filling much more. Whoopi Goldberg is the wacky but warm nanny in this touching film.
United Artists, Allentown

FORREST GUMP (PG) ★★★★★ — This magical movie is destined to be a great American classic. Its only fault is that it is about 20 minutes too long. But the story is so compelling, so delicious, it's perfectly understandable why its creators were reluctant to end it. An absolute must see. G.S.
General Cinema, Lehigh Valley Mall; United Artists, Easton

FRESH (R) — In the violence-strewn streets of Brooklyn, a young man battles to save himself and his family from the ravages of gangs, drugs and despair. Stars Sean Nelson, Giancarlo Esposito, N'Bushe Write, and Samuel L. Jackson.
General Cinema, Lehigh Valley Mall

THE LITTLE RASCALS (PG) — The black-and-white series starring Spanky, Alfalfa, Buckwheat, Darla and the rest of the "Our Gang" kids gets color film and a modern retelling in this movie starring Penelope Spheeris ("Wayne's World II").
AMC Tilghman 8, South Whitehall

MILK MONEY (PG) — In this film by director Richard Benjamin, a trio of pre-pubescent boys pool their milk money to solve the mystery of girls by hiring a hooker. They get robbed, but are taken under the wing of a big-hearted hooker played by Melanie Griffith. One of the boys sees through her rough veneer and decides she'd be perfect for dad, played by Ed Harris. You can bet your cookie jar stash on where "Milk Money" goes from there.
AMC Tilghman 8, South Whitehall; United Artists, Allentown; United Artists, Easton

NATURAL BORN KILLERS (R) ★★★★★ — A triumph of contrasts, Oliver Stone's latest cautionary epic mixes chaos with coherence, primal anger with sitcom humor, and TV news violence with soap-opera drama into a disturbingly hypnotic whole. Though it often threatens to disintegrate into a long MTV video, "Killers" emerges as an important film unlike any you've seen before. D.R.
AMC Four, Palmer; AMC Tilghman 8, South Whitehall; General Cinema, Lehigh Valley Mall

THE NEXT KARATE KID (PG) — Ralph Macchio is gone, but this black-belt coming-of-age story keeps on kicking in this, its fourth installment. This time Hillary Swank is the kid and Pat Morita returns to supply the philosophy.
AMC Tilghman 8, South Whitehall; United Artists, Allentown; United Artists, Easton

TRIAL BY JURY — Armand Assante is a New York City organized crime kingpin who spins his charms and dangerous wiles on a naive but resourceful juror, played by Joanne Whalley-Kilmer, during his murder trial. Also stars Gabriel Byrne and William Hurt.
AMC Four, Palmer; AMC Tilghman 8, South Whitehall

TRUE LIES (R) — ★★★★★ Arnold Schwarzenegger ("Last Action Hero") and James Cameron ("Terminator") don't ask you to suspend belief to enjoy their latest explosion fest, they sort of put a gun to your head and demand it. So, of course you will, and once you get over the tack-on plot of a man hiding his spying ways from his wife, you become a willing victim of two-and-a-half hours of some of the best action ever captured on film. D.R.
AMC Plaza Theatre, Whitehall Mall

Time out

Fun and Entertainment

the list

MUSIC

Rock/Pop

THURSDAY 9/15

4-11 BLUE RIBBON BAND, The Funhouse, 5 E. 4th St., Bethlehem, 868-5311.
STRYCHNINE, THE RAT TRAP, and CIRCUS MAXIMUS, The Acorn Hotel, 451 Lehigh St., Allentown, 437-1180.
NEW KIND OF TALK, Second Avenue, 302 W. Broad St., Bethlehem, 691-9919.
SIBILENCE, Porters' Pub, 700 Northampton St., Easton, 250-6561.
SWIRL, and THE ARMADILLOS, Lupo's Pub and Club, Lehigh Shopping Center, Bethlehem, 867-4404.
THE BOOGIE STEW, Silver Star Saloon and Dance Hall, 25 E. Elizabeth Ave., Bethlehem, 868-1721.
LATINO NIGHT, dance to your favorite Latin bands, merengue, salsa and other Latin sounds, with DJ Baby J, Starz Nite Club, 410 Allentown Dr., Allentown, 435-4389.

FRIDAY 9/16

WAITING FOR RAIN, The Funhouse, 5 E. 4th St., Bethlehem, 868-5311.
THE EVAN HALL BAND, Second Avenue, 302 W. Broad St., Bethlehem, 691-9919.
BAD CLAMS, Porters' Pub, 700 Northampton St., Easton, 250-6561.
MISBEHAVIN' and POKER FACE, Lupo's Pub and Club, Lehigh Shopping Center, Bethlehem, 867-4404.
THE ELECTRIC FARM, Cannon's, 448 N. 9th St., Allentown, 820-9313.
APACHE FOG, South Side Saloon, 117 E. 3rd St., Bethlehem, 691-5248.
CRAZY HEART, country dancing, Castle Hill Ballroom, 1529 Broadway, Bethlehem, 866-0063.
PANAMA LIMITED, University Station at Comfort Suites, 120 W. Third St., Bethlehem, 882-9700.
GUMBO COMBO, The Sterling Hotel, 343 Hamilton Blvd., Allentown, 433-3480.
RIO, Mountainville Inn, 1996 S. 5th St., Allentown, 797-2060.
PINK FLOYD TRIBUTE with THE MACHINE, Starz Nite Club, 410 Allentown Dr., Allentown, 435-4389.
TRUFFLE, from NYC, Peppercorn Pub, Rt. 309, Coopersburg, 282-9003.
SESSION, 8 p.m.-midnight, Riegelsville Hotel, 10-12 Delaware Rd. (off Rt. 611), Riegelsville, 749-2469.
SHEP, Mahoney's, 1609 Hanover Ave.,

Allentown, 433-6170.

SATURDAY 9/17

THE CRACK BABIES, The Funhouse, 5 E. 4th St., Bethlehem, 868-5311.
CARL MALCOLM, The Acorn Hotel, 451 Lehigh St., Allentown, 437-1180.
THE TALL GUYS, Cannon's, 448 N. 9th St., Allentown, 820-9313.
THE BOOGIE STEW, Second Avenue, 302 W. Broad St., Bethlehem, 691-9919.
CIRCLE SKY, Porters' Pub, 700 Northampton St., Easton, 250-6561.
CRYIN' JONESY, Lupo's Pub and Club, Lehigh Shopping Center, Bethlehem, 867-4404.
THE EVAN HALL BAND, The Sterling Hotel, 343 Hamilton Blvd., Allentown, 433-3480.
WILD BILL AUBEL, 8 p.m.-midnight, Riegelsville Hotel, 10-12 Delaware Rd. (off Rt. 611), Riegelsville, 749-2469.
BETWEEN THE LINES, hear the unique and harmonious group that dazzled Musikfest crowds, Silver Star Saloon and Dance Hall, 25 E. Elizabeth Ave., Bethlehem, 868-1721.
JESTER'S TEAR, Peppercorn Pub, Rt. 309, Coopersburg, 282-9003.
PANAMA LIMITED, University Station at Comfort Suites, 120 W. 3rd St., Bethlehem, 882-9700.
TOM TAYLOR, The Rock Room at Starz Nite Club, 410 Allentown Dr., Allentown, 435-4389.
JYNX, Mountainville Inn, 1996 S. 5th St., Allentown, 797-2060.

SUNDAY 9/18

BENNETT MICHAELS, The Chicken Lounge, 3245 Hamilton Blvd., Laneco Shopping Center, Allentown, 439-1707.
JOHN FLYNN, Silver Star Saloon and Dance Hall, 25 E. Elizabeth Ave., Bethlehem, 868-1721.
ELECTRONIC MUSIC PLUS, combining live performers of both acoustic and electronic instruments with recorded sound, 7:30 p.m., Payne Gallery, Moravian College, 1210 Main St., Bethlehem, \$8, \$5 seniors, \$3 children, 861-1650.

MONDAY 9/19

CRAIG THATCHER, solo, Peppercorn Pub, Rt. 309, Coopersburg, 282-9003.
OPEN MIKE with PHIL STAHL, The Funhouse, 5 E. 4th St., Bethlehem, 868-5311.

TUESDAY 9/20

DISCO DANCE PARTY with JOHNNY FEVER, The Funhouse, 5 E. 4th St., Bethlehem, 868-5311.



Deborah Henson-Conant plays Saturday at Godfrey Daniels.

OPEN MIKE NIGHT with DR. LOVE, The Sterling Hotel, 343 Hamilton Blvd., Allentown, 433-3480.
OPEN MIKE NIGHT with WILL, 7:30 p.m., Seattle Espresso, 7th Street, Allentown, 435-9096.

WEDNESDAY 9/21

BIG BOSS BAND, The Funhouse, 5 E. 4th St., Bethlehem, 868-5311.
TOM HAMPTON, The Sterling Hotel, 343 Hamilton Blvd., Allentown, 433-3480.
BOB SPANBERGH, Peppercorn Pub, Rt. 309, Coopersburg, 282-9003.
THE HONEY BUZZARDS, Starz Nite Club, 410 Allentown Dr., Allentown, 435-4389.
OPEN MIKE with PHIL STAHL, 10 p.m., Second Avenue, 302 W. Broad St., Bethlehem, 691-9919.
OPEN MIKE with THE BASIN STREET BOYS, 9:30 p.m.-1:30 a.m., The Raven's Nest, 625 Old Bethlehem Rd., Quakertown, 536-5369.
OPEN MIKE with DEAN ROTH, The Acorn Hotel, 451 Lehigh St., Allentown, 437-1180.

Blues

THURSDAY 9/15

THE DETONATORS, The Sterling Hotel, 343 Hamilton Blvd., Allentown, 433-3480.

FRIDAY 9/16

BLUES NIGHT OUT, Silver Star Saloon and Dance Hall, 25 E. Elizabeth Ave., Bethlehem, 868-1721.
JOHNNY CHARLES and THE STINGRAYS, The Raven's Nest, 625 Old Bethlehem Rd., Quakertown, 215-536-5369.
NOSMO KING, Anylise's Hava Java, 526 N. 19th St., Allentown, 432-3045.

SATURDAY 9/17

BLUE PLATE SPECIAL, The Raven's Nest, 625 Old Bethlehem Rd., Quakertown, 215-536-5369.

TUESDAY 9/20

RUNAWAY BOYS, acoustic folk and blues, Anchor Inn, 1328 Liberty St., Allentown, 439-9138.

WEDNESDAY 9/21

MIKE DUGAN and BLUES MISSION, 8 p.m.-midnight, Chit Chat Club, Holiday Inn Bethlehem, Rts. 512 and 22, 866-5800.
DAVE 'THE BLUES GUY', Anylise's Hava Java, 526 N. 19th St., Allentown, 432-3045.

Next page, please

Tommy's Upholstery



"Your Furniture Restoration Experts Since 1910"

1502 Stefko Blvd.
867-3371

AVOID THE RUSH SERVICE YOUR SNOW BLOWER NOW!

435-4769

E R E
 EASTERN RENTAL & EQUIPMENT CO., INC.
 SALES & SERVICE
 1520 E. PENNSYLVANIA ST.
 ALLENTOWN, PA 18103

Todd's Cafe

Come Dine At Our Table

The Great Chefs' Tasting Party

Enjoy: Cheese Tortellini, Rainbow Fusilli, Ziti and Small Shells with Four Sauces and Live Entertainment
 September 18, 1994
 12 noon - 4 pm

The Holiday Inn Conference Center in Fogelsville benefiting United Cerebral Palsy
 Tickets available at Todd's
 208 Spring Garden St.
 Easton, PA
 258-0112



SUPER SAVER SALON

MORE style.
 MORE convenience.
 AND you save every day!

Haircut & Shampoo \$11
 Perm Wave \$35
 (including haircut & style) reg. \$50
 Shampoo, Haircut and Style\$15
 Shampoo, Condition and Style\$10

App. not always necessary

Hotel Bethlehem
 865-4213

Featuring

- Build Your Own Box Lunch
- Specialty Sandwiches
- Let Us Furnish Your Tailgate Parties with Hot Soups & Box Lunches
- Dine-In or Take-Out



78 W. Market Street
 Bethlehem, PA 18018

(610) 954-9450

Hours: Mon.-Sat. 11-7, Sun. 11-6

Coupon

\$1.00 OFF

All Sandwiches after 5p.m.
 eat-in or take-out

with this coupon-expire Sept. 30, 1994

Touchstone Theatre and Mock Turtle Marionette Theatre

present

ONE IN THE WHEELHOUSE

September 20-October 8

Tuesday - Friday 8pm, Saturday 2pm & 8pm

They came searching for Something More out of life.

You won't believe what they found.



Call (610) 867-1689
 321 East Fourth Street Bethlehem, PA
 Tickets \$10-\$14 • Student/Senior/Group Discounts

From previous page

Folk

THURSDAY 9/15

BOB NICHOLAS, Anylise's Hava Java, 526 N. 19th St., Allentown, 432-3045.
SWING JAM, the perfect place to bring sheet music of those old swing, big band, Dixieland and western swing standards, all instruments welcome, 8 p.m., Godfrey Daniels, 7 E. 4th St., Bethlehem, \$2, 867-2390.

FRIDAY 9/16

OTTO BOST, The Ferry Street Cafe and Cookshop, 219 Ferry St., Easton, 250-9720.
THE FLEXX BAND, 8-11 p.m., Viennese Pastries and Cafe, 500 Main St., Bethlehem, 866-0112.
JONATHAN EDWARDS with TOM WALZ, a long-lived and talented performer mixing country, folk and rock, 8 and 10 p.m., Godfrey Daniels, 7 E. 4th St., Bethlehem, \$12.50 in advance, \$13.50 at the door, 867-2390.

SATURDAY 9/17

THE NICARAGUAN YOUTH CHOIR, 40 Nicaraguan teenagers now on their first concert tour in the United States sing, dance, and play instruments, 8 p.m., Muhlenberg College Chapel, Chew St., Allentown, \$10, \$3 limited income, 433-6421.
DEBORAH HENSON-CONANT, this electrifying and rare performer combines flamenco, blues, Latin and African styles into a unique jazz sound — and she does it all on the harp, 8 p.m., Godfrey Daniels, 7 E. 4th St., Bethlehem, \$10, 867-2390.
JACKIE KORESKO, The Ferry Street Cafe and Cookshop, 219 Ferry St., Easton, 250-9720.
JOE LAZORIK'S "GOOD TIMES PIANO MUSIC", 9 p.m., The Livewire, 1104 Butler St., Easton, 250-0687.

SUNDAY 9/18

OPEN MIKE, one of the best and most interesting gatherings of local talent on a Sunday night, 8 p.m., Godfrey Daniels, 7 E. 4th St., Bethlehem, \$2.50, 867-2390.
KINGTET, 1-5 p.m., Viennese Pastries and Cafe, 500 Main St., Bethlehem, 866-0112.
JANE WELLINGTON, 6-11 p.m., Viennese Pastries and Cafe, 500 Main St., Bethlehem, 866-0112.

TUESDAY 9/20

CABARET SINGERS' OPEN MIKE, hosted by Bob Cohen, for budding Streisands and Bennetts, 8 p.m., Godfrey Daniels, 7 E. 4th St., Bethlehem, \$2, 867-2390.

WEDNESDAY 9/21

GODFREY'S HOOT, a real, old-fashioned, gather-'round-the-campfire hootenanny for the singer in all of us, 8 p.m., Godfrey Daniels, 7 E. 4th St., Bethlehem, \$2, 867-2390.

Jazz

THURSDAY 9/15

JUNE THOMAS, 5-8 p.m., Chit Chat Club, Holiday Inn Bethlehem, Rts. 512 and 22, 866-5800.
VANCE CAMISA QUARTET, 8 p.m.-midnight, Chit Chat Club, Holiday Inn Bethlehem, Rts. 512 and 22, 866-5800.

FRIDAY 9/16

DAVE KENNY TRIO, 9 p.m.-1 a.m., Cheers Lounge, Comfort Inn, Rts. 191 and 22, Bethlehem, 865-6300.
GENE GALLIGAN, 5-8 p.m., Chit Chat Club, Holiday Inn Bethlehem, Rts. 512 and 22, 866-5800.
JAZZ RENAISSANCE, 9 p.m.-1 a.m., Chit Chat Club, Holiday Inn Bethlehem, Rts. 512 and 22, 866-5800.

SATURDAY 9/17

MIKE MELILLO, solo piano, 9 p.m.-1 a.m., The Deer Head Inn, Rt. 611, Delaware Water Gap, \$5, 717-424-2000.
CAROL TULLIO and ELEGANCE, 9 p.m.-1 a.m., Cheers Lounge, Comfort Inn, Rts. 191 and 22, Bethlehem, 865-6300.
GARY RISSMILLER TRIO, 9 p.m.-1 a.m., Chit Chat Club, Holiday Inn Bethlehem, Rts. 512 and 22, 866-5800.

SUNDAY 9/18

NANCY and SPENCER REED, 4-7 p.m., The Deer Head Inn, Rt. 611, Delaware Water Gap, 717-424-2000.

MONDAY 9/19

ROY LEFEVER, 5-8 p.m., Chit Chat Club, Holiday Inn Bethlehem, Rts. 512 and 22, 866-5800.



Musikfest favorite *Between the Lines* performs Saturday at the Silver Star Saloon and Dance Hall.

ELI, 8 p.m.-midnight, Chit Chat Club, Holiday Inn Bethlehem, Rts. 512 and 22, 866-5800.

TUESDAY 9/20

GENE GALLIGAN, 5-8 p.m., Chit Chat Club, Holiday Inn Bethlehem, Rts. 512 and 22, 866-5800.
DAVE KENNY TRIO, 8 p.m.-midnight, Chit Chat Club, Holiday Inn Bethlehem, Rts. 512 and 22, 866-5800.

WEDNESDAY 9/21

LOU CZECHOWSKI, 5-8 p.m., Chit Chat Club, Holiday Inn Bethlehem, Rts. 512 and 22, 866-5800.

Classical

FRIDAY 9/16

JASON TAYLOR, classical guitar, Anylise's Hava Java, 526 N. 19th St., Allentown, 432-3045.

SATURDAY 9/17

PETER SITTNER, classical guitar, Anylise's Hava Java, 526 N. 19th St., Allentown, 432-3045.
CAROL THOMPSON, classics on the harp, 5-9 p.m., Spring Valley Inn, Station Ave., Bethlehem, 838-6767.

WEDNESDAY 9/21

JOHN WESLEY DICKSON, classical guitar, Spring Valley Inn, Station Ave., Bethlehem, 838-6767.

ALLAGE

FRIDAY 9/16

THE OUTLAW PANDAS, STAVIUS, CHARLOTTE'S FUNERAL, NEPENTHE, HERCROSS, 6 p.m.-midnight, Scarlett O'Hara's, 40 W. Broad St., Bethlehem, 867-3095.

SATURDAY 9/17

THIRD FROM THE SUN, PENDULUM, CRUTCH, TREADCHAIN, SHOEBOX, 6 p.m.-midnight, Scarlett O'Hara's, 40 W. Broad St., Bethlehem, 867-3095.

BIG NAMES

FRI.-SAT. 9/16-17

THE EAGLES, The Spectrum, Pattison Place, Philadelphia, 215-336-3600 or 215-336-2000.

SATURDAY 9/17

KENNY G, Lehigh University, Stabler Arena, Bethlehem, 758-6611.

SUNDAY 9/18

RICKY VAN SHELTON, Valley Forge Music Fair, Rt. 202, Devon, 644-5000.

THU.-FRI 9/22-23

THE ROLLING STONES, BLIND MELON, Veterans Stadium, Broad and Pattison, Philadelphia, 215-685-1500.

FRIDAY 9/23

THE OAK RIDGE BOYS, CRYSTAL GAYLE, Valley Forge Music Fair, Rt. 202, Devon, 644-5000.
BUDWEISER SUPERFEST, with **R. KELLY, AALIYAH, HEAVY D., WARREN G., COOLIO**, The Spectrum, Pattison Place, Philadelphia, 215-336-3600 or 215-336-

2000.

SATURDAY 9/24

BOBBY McFERRIN'S BANG ZOOM, Valley Forge Music Fair, Rt. 202, Devon, 644-5000.
BILL COSBY, The State Theater, 453 Northampton St., Easton, 252-3132.

SUNDAY 9/25

BILLY RAY CYRUS, Valley Forge Music Fair, Rt. 202, Devon, 644-5000.

MONDAY 9/26

CHICK COREA, Kutztown University, Schaeffer Auditorium, 683-4511.

FRI.-SUN. 9/30-10/2

ENGELBERT HUMPERDINCK, Valley Forge Music Fair, Rt. 202, Devon, 644-5000.

SUNDAY 10/2

POCO, 8 p.m., The Roxy Theater, 2004 Main St., Northampton.

WED.-FRI. 10/5-7

THE GRATEFUL DEAD, The Spectrum, Pattison Place, Philadelphia, 215-336-3600 or 215-336-2000.

FRIDAY 10/7

PHISH, Lehigh University, Stabler Arena, Bethlehem, 758-6611.
PETER, PAUL, and MARY, Valley Forge Music Fair, Rt. 202, Devon, 644-5000.

THEATER

Drama

HISPANIC AMERICAN LEAGUE OF ARTISTS (HALA), Latin-flavored music, dance and drama, 8 p.m. Monday, part of Counter-Culture Mondays, Theatre Outlet, 333 Court St., Allentown, \$5, 820-9270.

FAITH HEALER, a play by Brian Friel, Ireland's leading contemporary playwright, opens Thursday through 10/2, 8 p.m. Thursday-Saturday, Theatre Outlet, 333 Court St., Allentown, \$10, \$5 students/seniors, 820-9270.

ONE IN THE WHEELHOUSE, from Touchstone Theatre and Mock Turtle Marionette Theatre, an outlandish adventure following three characters as they face internal and external roadblocks on a spiritual journey, opens Tuesday through 10/8, 2 p.m. and 8 p.m. Tuesday-Saturday, Touchstone Theatre, 321 E. Fourth St., Bethlehem, \$10-\$14, 867-1689.

DEAD HEAT, a new murder mystery set in the 1940s with more than 15 speaking roles for audience members, through 11/5, 7:30 p.m. Friday, 7 p.m. Saturday, Ramada Inn, Whitehall, \$27.95-\$32.95 dinner, show, tax and gratuity, 439-1037.

THE MASK MAN, performed by the Faustwork Mask Theatre, part stand-up comedy and part primal magic focusing on the oldest theatre device, the mask, characters include a nerd, Elvis and many surprises, 7:30 p.m., Wednesday, 8380 Mohr Lane, Penn State Allentown Campus, free, 285-5021.

Instruction

SATURDAY 9/17

DRAMA EXERCISES, taught by PA STAGE's Director of Outreach Jeff Frank for education professionals, 1 p.m., 837 Linden St., Allentown, free, 434-3394.
JAZZ AND BALLET DANCE CLASSES, taught by E. Laura Hausmann, starts Tues-

Da Vinci's
Italian Ristorante
Specializing in the "art" of fine Italian cuisine

50% OFF ANY DINNER ENTREE
when you purchase a second dinner entree of equal or greater value with this ad.

5000 Bath Pike (Rt. 512) Bethlehem, PA 18017 (1 Mi. N. of 22)
(215) 837-6886
Hours: Mon.-Fri. 11-10, Sat. 3-10, Sun. 12-9

GUS'S CROSSROADS INN
Fine Foods in a Casual Atmosphere

FRIDAY & SATURDAY DINNER SPECIALS

Roast Duck w/Raspberry Sauce	\$9.95
Roast Prime Rib of Beef	\$8.95
Chesapeake Bay Steak w/Mozzarella Cheese & Lagastino	\$11.95
(Includes Soup, Salad, Potato, or Veg.)	

Early Bird Specials Mon.-Sat. 12-6, Sun. 12-8

Roast Eye Round of Beef	\$6.95
Broiled Filet of Salmon w/Dill Sauce	\$7.95
Veal Cutlet Parmesan w/spaghetti	\$7.95
Baby Beef Liver w/Fried Onions	\$5.95
Fresh Fried Oysters	\$7.95
Roast Turkey w/Stuffing	\$7.95
Seafood Trio (Crab Pattie, Scallops & Flounder)	\$7.95
(Served w/Soup, Salad, Pot., Veg., Jello, Rice or Choc. Pudding, or Sherbet)	

WEDNESDAY IS ALWAYS GREEK NIGHT
Seidersville Road, Just Off Rt. 378, Bethlehem **867-8821**

MARKTPLATZ
Of Bethlehem

The Bethlehem Tourism Authority wishes to thank the following organizations for their support of the Marktplatz

VENDORS:	RESTAURANTS:
Bethlehem Bagel Company	Confetti Cafe
Frank's Nursery	Giovanni's Cafe
Groman's Bakery	Far Pavilions
Gourmet on the Go	
The Gourmet Connection	FRIENDS:
International Produce	The Artisans' Circle
LaBelle Fleur	Bethlehem Economic
Laneco	Development Corporation
The Lemon Tree	Bethlehem Musikfest
The Pepper Trail	Association
Philadelphia Pretzels	Downtown Bethlehem
Sassafras Bakery	Association
Shafer Bologna Company	SPONSORS:
Tasty's Nuts & Stuff	Dick Milham Dealerships
	Lehigh Valley Bank
	The Bethlehem Star

Thanks also to the community for making the Marktplatz your place to shop during its first year!
We look forward to seeing you back on the plaza in 1995.

day through 11/15, Cedar Crest College, 100 College Drive, Allentown, \$58, registration 800-932-6236.
JAZZ DANCE MASTER CLASS WITH FRANK HATCHETT, Sunday at Muhlenberg College, 1-2 p.m. children's class (ages 9-12), 2:30-4 p.m. adult and teen intermediate, 4-5:30 adult and teen advanced, \$10 children, \$15 adults and teens, must be Lehigh Valley Dance Forum member (\$6 fee), 758-8209
SWEET ADELINES INTERNATIONAL VOCAL LESSONS, free lessons start 7:30 p.m. Monday through 10/31, members being recruited for the musical arts chorus which teaches and performs various types of music in four-part harmony, Faith Evangelical Lutheran Church, 3355 MacArthur Rd., Whitehall, 797-3534.

Auditions

MUSIC DIRECTOR WANTED, for Pennsylvania Playhouse's December show, "Scrooge," experience with choral music desired but not required, call David Abel, 791-1095; also needed are directors and technical designers for the 1995 season, 865-6665.
CAMERATA SINGERS FOR 1994-95 SEASON, the choir of 75 voices will appear in three concerts with the Pennsylvania Sinfonia Orchestra, rehearsals start this Tuesday, information 282-4282.

COMMUNITY

SATURDAY 9/17

WOMEN'S AGLOW FELLOWSHIP MEETING, with guest speaker Nancy Fenstermacher, a member of the pastoral staff of the First Assembly of God, 9 a.m., Friendly Restaurant, MacArthur Rd., Whitehall, \$5, 264-9570.
GRACE DELIVERANCE BAPTIST CHURCH MORTGAGE BURNING CELEBRATION, banquet and worship service, guest speaker, Dr. W. Braxton Cooley Sr., 5 p.m., 838 N. New St., Bethlehem, 866-2899.

SUNDAY 9/18

SINGLES 55+ 'FRIENDS CLUB', Ss. Simon and Jude Hall, W. Broad St., Bethlehem, 868-7172.

MONDAY 9/19

ADVISORY COMMITTEE MEETING BETHLEHEM SENIOR CITIZENS COUNCIL, new members welcome, 9:30 p.m., Buchanan St., 865-2092.
TOURETTE SYNDROME SUPPORT GROUP, meets every third Monday, 7:30 p.m., Grace U.C.C., 9th St. and Lincoln Ave., Northampton, 262-7186.
FLU VACCINE 1994, for Bethlehem residents, \$5 per shot, no cost for Medicare B, 9 a.m.-11 a.m., Rooney Building, 4 E. 4th St., Bethlehem, 866-8101.

WEDNESDAY 9/21

FREE EMPHYSEMA SCREENING, a blood screening to identify a specific form of genetic emphysema, Alpha 1 Antitrypsin Deficiency, 1-5 p.m., office of Dr. Mark Shampain, 3131 College Heights Blvd., Allentown, 800-894-8485.

Announcements

CRAFTERS WANTED, for LARC's annual Arts and Crafts show on 11/5, 9 a.m.-3 p.m., Cathedral Church of the Nativity, 321 Wyandotte St., Bethlehem, 867-7527.

EVENTS

FRIDAY 9/16

PSYCHIC MAGIC SHOW, by mind reader Robert Channing, "He knows what you're thinking and he likes it!" 7 p.m. Tompkins

Center Cafe, Cedar Crest College, free, 740-3792 Ext. 483.

FRI. - SUN. 9/16-18

GRAND PRIX EXTRAVAGANZA, gourmet food, live entertainment and auction of racing memorabilia during the Bosch Spark Plug Grand Prix, to benefit Northampton Community College's College Foundation, 6-10 p.m. Friday kickoff party, weekend package \$250 per person, tickets for kickoff party \$75 per person, \$125 per couple, 861-5451.

SATURDAY 9/17

HELLERTOWN LIBRARY EXTRAVAGANZA, book and bake sale, flea market, story readings, library still needs donations, 8 a.m.-5 p.m., Hellertown Area Library, 409 Constitution Ave., Hellertown, 838-8381.
HOSPICE COMMUNITY FAIR, to benefit Visiting Nurse Association of Easton, face painting, duck and fish pond, special appearance by "Power Rangers," blood pressure screenings, arts and crafts, food, 9 a.m.-4 p.m., 3421 Nightingale Dr., Palmer Township, 258-7189.

HAWK WATCH, join Audubon Society President Arlene Koch on Baer's Rocks to watch the hawk migration, 8:30 a.m., Wildlands Conservancy, 3701 Orchid Place, Emmaus, members only, 965-4397.
USED WINTER CLOTHING AND BAKE SALE, to benefit World Hunger, 9 a.m.-3 p.m., St. John's Lutheran Church, Broad and Prospect Sts., Nazareth, 759-3090.
LUTHERAN SERVICES DINNER DANCE, to benefit the Volunteer Home Care Program, 6:30 p.m. cash bar, 7:30 dinner, 8:30-11:30 dancing, Holiday Inn Conference Center, Rt. 100, Fogelsville, \$50 per person, black tie optional, 867-4088.

SUNDAY 9/18

COUNTRY/WESTERN DAY, entertainment, country/western flea market, food, games, dancing, 10 a.m.-10:30 p.m., Petersville Rod and Gun Club, 550 Club Rd., Bath, 264-1371.

MON. - SAT. 9/19-24

HISPANIC HERITAGE WEEK, events at Lehigh University: 12:15 p.m. Monday, University Center Stage Door, Latin American dance demonstration; 7 p.m. Monday, Mark Twain Room, Maginnes Hall, readings of Latino literature; Tuesday, Stage Door, flamenco demonstration by the Danzante Dance Company; 7 p.m. Wednesday, 241 Rauch Business Center, Fernando Mateo, sponsor of Toys for Guns program; Thursday, U.C. Sinn Room, domino tournament; 12:15 p.m. Friday, Stage Door, SALSA group dancing; 7 p.m. Thursday, U.C. Hutchinson Room, film "Like Water for Chocolate"; Saturday, Broughal Auditorium, Afro-Latino music with Thokoza and Los Pleneros de la 21; information, 758-4152.

ART

ALLENTOWN ART MUSEUM, Fifth and Court Sts., 10 a.m.-5 p.m. Tuesday-Saturday, 10 a.m.-8 p.m. Thursday, 1-5 p.m. Sunday, \$3.50 adults, \$3 seniors, \$2 students, 432-4333:
 • Educators Open House, 3:30-6 p.m. Monday, free admission for teachers, administrators, curriculum specialists, registration required.
 • "Old Masters in a New Light," the first completely redesigned installation of the museum's internationally known European art collection in 20 years.
 • "Restraint and Surrender," photographs by Ken Graves and Eva Libman, through 10/9.
 • "John Cage: Strings," monotypes from

Next page, please

calvin & hobbes

By BILL WATTERSON

HELP ME WITH THIS HOMEWORK, OK? WHAT'S 6+3?

6+3, EH? WELL, THIS ONE IS A BIT TRICKY.

FIRST WE CALL THE ANSWER "Y," AS IN "Y DO WE CARE?" NOW Y MAY BE A SQUARE NUMBER, SO WE'LL DRAW A SQUARE AND MAKE THIS SIDE 6 AND THAT SIDE 3. THEN WE'LL MEASURE THE DIAGONAL.

I DON'T REMEMBER THE TEACHER EXPLAINING IT LIKE THIS.

SHE PROBABLY DOESN'T KNOW HIGHER MATH. WHEN YOU DEAL WITH HIGH NUMBERS, YOU NEED HIGHER MATH.

BUT THIS DIAGONAL IS JUST A LITTLE UNDER TWO.

OK, HERE, I'LL DRAW A BIGGER SQUARE.

HEY, NO COMIC BOOKS UNTIL YOU FINISH YOUR HOMEWORK.

I DID FINISH.

THAT DIDN'T TAKE VERY LONG. DID YOU DO A GOOD JOB?

I DID A GREAT JOB. WHEN YOU'RE AS FAR AHEAD OF THE CLASS AS I AM, IT DOESN'T TAKE MUCH TIME.

WELL WE'LL SEE ABOUT THAT WHEN I GET BACK FROM MY PARENT-TEACHER CONFERENCE WITH MISS WORMWOOD.

I'M SURE IT WILL BE AN INFORMATIVE MEETING.

GOSH, I FORGOT TO TELL YOU! MISS WORMWOOD SAID I WAS SO GOOD, YOU DIDN'T NEED TO BOTHER COMING, REALLY! SHE SAID YOU DON'T HAVE TO GO!

YOU'RE GOING TO TALK TO MY TEACHER?

OH MAN! MOM WENT TO A PARENT-TEACHER CONFERENCE. I'M AS GOOD AS DEAD. MISS WORMWOOD WILL TELL MOM ALL SORTS OF HORROR STORIES ABOUT ME!

HORROR STORIES?

WELL, IT'S ALL A QUESTION OF PERSPECTIVE. STILL, I THINK I SHOULD BE ALLOWED TO HAVE A LAWYER PRESENT AT THE MEETING.

WHAT ARE YOU GOING TO SAY WHEN YOUR MOM GETS BACK?

NOTHING.

NOTHING AT ALL?

BUDDY, IF YOU THINK I'M EVEN GOING TO BE HERE, YOU'RE CRAZY!

I'M HOME. HOW WAS YOUR MEETING WITH CALVIN'S TEACHER?

WELL, WHEN WE GOT TO THE CLASSROOM, WE SAW THAT ALL THE KIDS HAD DRAWN SELF-PORTRAITS IN ART CLASS, AND HAD LEFT THE PICTURES ON THEIR DESKS SO THE PARENTS WOULD RECOGNIZE THEIR CHILD'S SEAT.

THAT'S A CUTE IDEA. DID YOU FIND CALVIN'S PICTURE?

THERE WAS ONE DRAWING OF A GREEN KID WITH FANGS, SIX EYES, AND HIS FINGER UP HIS NOSE.

UH OH.

THE MEETING WENT DOWNHILL FROM THERE.

CALVIN, I... YIKE!

YOU'RE HOME! I DIDN'T EVEN FINISH PACK... THAT IS, UM...

LIES! EVERYTHING MISS WORMWOOD SAID ABOUT ME WAS A LIE! SHE JUST DOESN'T LIKE ME! SHE HATES LITTLE BOYS! IT'S NOT MY FAULT! I'M NOT TO BLAME!

SHE TOLD YOU ABOUT THE NOODLES, RIGHT? IT WASN'T ME! NOBODY SAW ME! I WAS FRAMED! I WOULDN'T DO ANYTHING LIKE THAT! I'M INNOCENT, I TELL YOU!

WHAT NOODLES?

OH... UH... HA HA! DID I SAY NOODLES? YOU MUST HAVE HEARD WRONG. I DIDN'T SAY NOODLES.

OK CALVIN, LET'S CHECK OVER YOUR MATH HOMEWORK.

LET'S NOT, AND SAY WE DID.

YOUR TEACHER SAYS YOU NEED TO SPEND MORE TIME ON IT. HAVE A SEAT.

MORE TIME?! I ALREADY SPENT TEN WHOLE MINUTES ON IT! TEN MINUTES SHOT! WASTED! DOWN THE DRAIN!

YOU'VE WRITTEN HERE 8+4=7. NOW YOU KNOW THAT'S NOT RIGHT.

SO I WAS OFF A LITTLE BIT. SUE ME.

YOU CAN'T ADD THINGS AND COME OUT WITH LESS THAN YOU STARTED WITH!

I CAN DO THAT! IT'S A FREE COUNTRY! I'VE GOT MY RIGHTS!

Enjoy the Quiet Elegance Of

Cheers LOUNGE at the... **Comfort Inn**

This Week's Entertainment By

Dave Kenney Trio Fri. 9/16

Carol Tulio & Elegance Sat. 9/17

Every Wed. Jazz Night
THE VANCE CAMISA QUARTET

Rts. 22 & 191 • Bethlehem - 865-6300

From previous page

the New Arts Program, through 10/30.

ARTSPACE 534, 534 Main St., Stroudsburg, 10 a.m.-5 p.m. Wednesday-Saturday, noon-4 p.m. Sunday, 717-476-5880:

- Mixed-media from Eleanor Clarkson, acrylic and pencil paintings from Linda Guenste, through 9/25.
- BACH AND COMPANY**, 447 Chestnut St., Emmaus, 10 a.m.-6 p.m. Tuesday-Friday, 10 a.m.-5 p.m. Saturday, Sunday and Monday, 965-2551:
- "Gallery Artists," Bertoia, Wiltraut, Longacre, Armbruster, Monk, Bossert, and Hudimac.
- THE BEVELED EDGE**, 921 W. Broad St., Bethlehem, 10 a.m.-7 p.m. Thursday, 10 a.m.-3 p.m. Saturday, 10 a.m.-5:30 p.m. Monday-Friday, 694-0250:
- Barbra Maroski, contemporary quilted wall hangings, through 10/1.
- CONNEXIONS**, 213 Northampton St., Easton, 10 a.m.-6 p.m. Wednesday, Thursday and Saturday, 10 a.m.-8 p.m. Friday, noon-4 p.m. Sunday, 250-7627:
- "Lori Samer with Clay," a ceramic artist working with both ceramic tile and mixed media sculpture, she employs the Raku firing technique giving her works a sense of timeworn beauty, through 10/16.
- DOMINICK'S ART WORLD**, 2152 W. Union Blvd., Bethlehem, 10 a.m.-8 p.m. Monday-Saturday, 10 a.m.-5 p.m. Sunday, 865-9450:
- "Music Room III" by Lina Lieu.
- Old train stations in Bethlehem and Allentown by Fred Bees and Caroline Peeler, George Lyster.
- Lithos by Tony Bennett and Elke Sommer.
- Florals and landscapes by Dominick Giunta.
- FRANK MARTIN GALLERY**, Dorothy and Dexter Baker Center for the Arts, Muhlenberg College, Allentown, 11 a.m.-4 p.m. Tuesday-Friday, noon-5 p.m. Saturday-Sunday, 821-3466:
- "In the Studio: Recent Works by Jessica Lenard," figurative and expressionistic paintings, through 10/14.
- THE GALLERY AT THE STATE THEATRE**, 453 Northampton St., Easton, noon-4 p.m. Friday-Sunday, 258-7766:
- "Kessler with Paint," large non-objective oil paintings on wood panels by Michael Kessler, through 10/9.
- LEHIGH UNIVERSITY ART GALLERIES**, Museum Operations, 17 Memorial Drive, Bethlehem, 758-3615:
- Dubois Gallery, Maginnes Hall, 9 a.m.-5 p.m. daily, 9 a.m.-noon Saturday:*
- Photographer David H. Wells, "Neighbors: Relations Between Arabs and Jews in Israel," through 10/13.
- "Text-Isles," textile expressions in two and three dimensions from artists Lynn Berkowitz, Nancy Moore Bess, Archie Brennan, Lois Bryant, Nancy Koenigsburg, Susan Martin Maffei, Joan Pao and Jolanta Rudzka-Habisiak, through 10/13.
- Hall Gallery, Alumni Memorial Building, 9 a.m.-5 p.m. Monday-Friday, 9 a.m.-noon Saturday, 2-5 p.m. Sunday:*
- "Todd Webb: Forgotten Masters Series," black-and-white photography of artists/photographers who have influenced movements in the history of photography in America.
- Ralph Wilson Gallery, Alumni Memorial Building, 9 a.m.-5 p.m. Monday-Friday, 9 a.m.-noon Saturday, 2-5 p.m. Sunday:*
- "Lucy Gans: Mab's Circle Preharvest—Sculpture Installation," Art and Architecture Faculty Exhibition Series, a mixed media temporary installation that commemorates meaningful places, through 10/31.
- Siegel Gallery, Iacocca Hall, Mountaintop Campus, 9 a.m.-10 p.m. Monday-Thurs., 9 a.m.-5 p.m. Friday:*
- "Mario Bencomo: Abstract Drawings," mixed media works on paper, six landmark drawings from his "Torquemada Series," reflecting a fascination with the 15th century Spanish Grand Inquisitor, opens Friday through 10/20.
- MORAVIAN COLLEGE**, Bethlehem, 861-1362
- Hauptert Union Building, Locust and Monocacy Sts., North Campus, 861-1491:*
- Mary Lou Cummings, through 9/29.
- Alumni Invitational Art Exhibit, 10/1 through 10/27, 8 a.m.-midnight daily.
- Payne Gallery, 1210 Main St., Bethlehem,*

11 a.m.-4 p.m. 10/18-19, hours 11 a.m.-4 p.m. Tuesday-Sunday, 861-1667:

- "Native America: Reflecting Contemporary Realities," Native American Art, 9/22 through 10/23.
- Ninth National Print Show, 10/27-11/27; deadline for slides, entry cards and fees, 9/22; deadline for accepted by mail, 10/17; deadline for hand-delivered work.
- HUGH MOORE HISTORICAL PARK AND MUSEUMS**, 200 S. Delaware Dr., Easton, at the Canal Museum, 10 a.m.-4 p.m. Monday-Saturday, 1-5 p.m. Sunday, 250-6700:
- "Bird's-Eye Views," 19th and 20th century maps, through 11/20.
- KEMERER MUSEUM OF THE DECORATIVE ARTS**, 427 N. New St., Bethlehem, noon to 5 p.m. Tuesday-Sunday, \$1-3, 868-6868:
- "40 Years at The Kemerer," through 11/28.
- MORAVIAN HISTORICAL SOCIETY, WHITEFIELD HOUSE**, 214 E. Center St., Nazareth, 1-4 p.m. daily, 759-5070:
- "Into All the World: 250 Years of Moravian Missions," artifacts from the society's extensive missions collection, through January.
- MORAVIAN MUSEUM**, 66 W. Church St., Bethlehem, guided tours 1-4 p.m. Tuesday-Saturday, 867-0173:
- "Moravian Origins: Herrnhut on the Estate of Count Zinzendorf," through 9/30.
- ROTUNDA OF BETHLEHEM TOWN HALL**, 10 E. Church St., 9 a.m.-4 p.m. Monday-Friday, 395-2608 or 437-4471 Ext. 517:
- Leslie Heffron, oil paintings, drawings, 10/2 through 10/28, reception 2-4 p.m. 10/2.

- THE SNOW GOOSE GALLERY**, 470 Main St., Bethlehem, 10 a.m.-5:30 p.m. Monday-Friday, 10 a.m.-8 p.m. Thursday, 10 a.m.-5 p.m. Saturday, 974-9099:
- Watercolors by Louise Woodard
- New limited edition prints from Greenwich Workshop artists Bev Doolittle, Paul Landry, Dean Mitchell and others
- "Angels and Other Guardians," works on paper by Nancy Bossert, opens 9/25 through 10/31.
- TOMPKINS COLLEGE CENTER GALLERY**, Cedar Crest College, Allentown, 9 a.m.-9 p.m. daily, 740-3790:
- "Traditional Tapestries from Tezukayama College," Japanese weavings, tapestries and kimonos, through 10/2.
- TOUCHSTONE THEATRE GALLERY**, 321 E. 4th St., Bethlehem, open for viewing one hour before scheduled show times, 867-1689:
- Katina Sossiadis, opens Tuesday through 11/12.
- WILLIAMS CENTER FOR THE ARTS**, Lafayette College, Easton, 10 a.m.-5 p.m. Tuesday-Friday, 2-5 p.m. Sunday, call for Saturday hours, 250-5361:
- "Faculty Selects," emerging artists selected by Art Department faculty, through 10/2.

INSTRUCTION

THURSDAY 9/15

FOOT AND ANKLE CLINIC, comprehensive orthopedic evaluation and treatment of foot and ankle conditions, 1-3 p.m., first and third Thursdays of each month, Good Shepherd Rehabilitation Hospital, 501 St. John St., Allentown, 776-3497.

SATURDAY 9/17

HOW TO START AND RUN A SMALL BUSINESS, workshop designed for start-up companies and prospective entrepreneurs, sponsored by Lehigh's Small Business Development Center, 8 a.m.-noon, Rauch Business Center, Lehigh University, \$30 registration fee includes seminar materials, 758-3980.

MONDAY 9/19

LEARN PENNSYLVANIA GERMAN, lessons on speaking, reading and writing the dialect, 7-9 p.m. Mondays through 12/19, \$5, Hellertown Area Library, 409 Constitution Ave., Hellertown, 838-8381.

ARTHRITIS SELF-HELP COURSE, a five-week course taught by certified instructors from the Arthritis Foundation, 1:30-3:30 p.m., 9/19, 10/4-17-25, and 11/1, Laros Conference Center, Doctors Pavilion, St. Luke's Hospital, Bethlehem, \$15, 954-

4781.

TUESDAY 9/20

MY NEW WEIGH OF LIFE, a 12-week fitness and lifestyle program for seniors from the Northampton County Cooperative Extension, 8:45-10:45 a.m. Tuesdays through 12/6, Senior Citizens' Centers Old York Road site, Bethlehem, \$60 (\$30 with PACE card), 756-1970.

BETTER BREATHING, Gordon Sawyer, director of St. Luke's Respiratory Therapy, gives helpful hints to breathing easier, 11:20 a.m., Bethlehem Senior Citizens' Centers Buchanan St. site, 865-2092

AGEWELL PROGRAMS: OSTEOPOROSIS, Helene Leonette, MD, teaches men and women to treat this common disease, 4 p.m. St. Luke's Cafeteria Conference Room, Bethlehem, 856-2092

WEDNESDAY 9/21

ACTIVE PARENTING OF TEENS, Jane Selden covers such topics as instilling courage and self-esteem, and the challenge of drugs and alcohol, 7-9 p.m. Wednesdays through 10/26, Hellertown Area Library, 409 Constitution Ave., Hellertown, \$15 for textbook, 838-8381.

SIGN LANGUAGE CLASS, Wednesdays through 11/30, 6-8 p.m. beginners classes, 8-9 p.m. intermediate, Good Shepherd Rehabilitation Hospital, 501 St. John St., Allentown, \$30.50 includes book, 776-3270.

KIDS

SATURDAY 9/17

PENNSYLVANIA YOUTH THEATRE SCHOOL OF PERFORMING ARTS, series of acting, dance and music classes for students ages 4-17, PYT Studios 44 E. Broad St., Bethlehem, 865-9188.

CHARLOTTE'S WEB, E.B. White's charming tale of devoted friendship, 2 p.m. Saturday, through 9/24, PA STAGE, 837 Linden St., Allentown, \$5, 433-3394.

SUNBURST PAGEANT, Westgate Mall, 2285 Schoenersville Rd., Bethlehem, beauty pageant for boys and girls under age 3, and girls 3-17, winners receive trophy, tiara, banner and local title plus \$200 entry fee to state level competition, 4:30 p.m. registration, 6 p.m. pageant, 867-4253.

KIDSPACE NATIONAL KIDSDAY, a new holiday focusing on family participation, featuring a bicycle rodeo for boys and girls age divisions 6-8, 9-10, 11-12, 13-14, 15-16; oval track, obstacle course, BMX track and mountain biking trail, 11 a.m.-noon registration, noon-3 p.m. preliminary heats, 3-5 p.m. final heats, Orchard Hill campus, Old Packhouse Rd., Orefield, 799-8074.

S.M.A.R.T. FISHING CLINIC, for boys and girls ages 7-13, taught by Rhonda Kern, certified Fishing Skills Instructor, 9 a.m.-noon, Minsi Lake, Upper Mt. Bethel Twp., free, space is limited to 15, 746-1978.

TUESDAY 9/20

HELLERTOWN AREA LIBRARY STORY-TIME PROGRAM, for children ages 3-5, featuring books written by Don Freeman, Maurice Sendak, Marc Brown and Eric Carle, 12:30 p.m., 409 Constitution Ave., Hellertown, 838-8381.

TRAILROMPERS, series of eight programs for children 4-to-6 years old, includes stories, crafts, games and discovery hikes, Trailrompers A meet 9:30-11 a.m. Tuesdays through 10/4, Trailrompers B meet Thursdays 1-2:30 p.m. starting 9/15 through 10/6, Wildlands Conservancy, 3701 Orchard Place, Emmaus, \$25 members, \$30 nonmembers, 965-4397

WEDNESDAY 9/21

FALL FROLIC, a chance to spend some

time with your 3-to-4-year-old doing easy nature activities, 10:30-11:30 a.m., Wildlands Conservancy, 3701 Orchard Place, Emmaus, \$4 members, \$5 nonmembers, 965-4397.

SPEAKERS

THURSDAY 9/15

BUDDHISM IN CAMBODIA TODAY: DESTRUCTION AND REVIVAL, Peter Byallay-Pap, director of the Khmer-Buddhist Educational Assistance Project, 4:15 p.m., Room 480 Maginnes Hall, Lehigh University, 758-3170

MEETING OF UNITED RESIDENTS OF MANUFACTURED (MOBILE) HOME COMMUNITIES, a chance to ask questions, exchange ideas and get updates on issues specific to owners or residents of mobile homes, 7 p.m., Schnecksville Fire Co. Pavilion, 398-3593.

FRIDAY 9/16

LABOR RELATIONS AND EMPLOYMENT LAW IN HUMAN SERVICES, by Jacqueline T. Shulman, a seminar geared for all level managers, program supervisors and middle managers in human service agencies, 9:30 a.m.-noon, Bethlehem Holiday Inn, Route 22, \$35, 257-0471.

SATURDAY 9/17

NATIONAL HEALTH CARE REFORM FORUM, with U.S. Rep. Paul McHale, 1 p.m., Easton Inn, Larry Holmes Drive and Third Street, Easton, free, 258-5880.

TUESDAY 9/20

LEHIGH VALLEY AQUARIUM SOCIETY, slide presentation and Q&A on garden pond installation and maintenance by Richard Koogler, plant propagation specialist and pond installation foreman, 7-9 p.m., downstairs meeting room of Bethlehem Area Public Library, 11 W. Church St.,

HOME IMPROVEMENT SPECIALISTS



TILE & MARBLE

TILEMASTER □□□□□

Let us make your ceramic tile look brand new!

Specializing in regrouting tile & wall repairs

CALL TODAY FOR A FREE ESTIMATE 882-9009

Advertise Here And Share A Tip With Our Readers!

FENCING

HORIZON FENCE & Home Improvements

- All types of wood and chain link fences
- Yard and Pool enclosures, Decks, Spackling, Painting

882-4178

3900 Klein Street, Bethlehem, PA 18017

CJ TILE & MARBLE

530 WEST BROAD STREET • BETHLEHEM, PA 18018 (215) 691-2791

SALES & INSTALLATIONS CUSTOM WORK

VISIT OUR SHOWROOM WE DO REPAIRS

MARBLE GRANITE

RESTORATION-GRINDING-REPOLISHING

To build your name awareness in Bethlehem, advertise your business and offer a home improvement tip here. Just call us at **868-4444**

PAINTING/DECORATING

FRED SCHALLER'S DECORATING

- ❖ Paperhanging ❖

Interior & Exterior Painting "serving since 1945"

865-0769

COUPON

Get 1 20-Minute Tanning Session

For only \$4 w/ Coupon Expires 10/31/94

Total Body Tanning 954-9240

117 E. 3rd St. 2nd Floor • Bethlehem, PA 18015

COUPON

free, 863-6768.
FOOTBALL, FEMINISM, AND OTHER CONTRADICTIONS, Jackson Katz, 8 p.m. Hauptert Union Building, Moravian College, Bethlehem, free, 861-1362.

WEDNESDAY 9/21
TELLING ALL THE STORIES: THE EFFECT OF TELEVISION ON OUR THINKING AND BEHAVIOR, Dr. George Gerbner, former dean of the Annenberg School, University of Pennsylvania, Tompkins Center Theatre, Cedar Crest College, Allentown, free, 740-3792 Ext. 571.
ALAN CHEUSE, fiction writer and National Public Radio commentator, kicking off Muhlenberg College's "Writers at Muhlenberg" reading series, 7 p.m., Egner Memorial Chapel, Allentown, 821-3235.
GEORGE BELLOW'S: PORTRAIT OF AN AMERICAN ARTIST, 29-minute video, noon, Allentown Art Museum, Fifth St., Allentown, free, 432-4333.

POETRY

THURSDAY 9/15
OPEN POETRY READING with ARMANDO, 7:30 p.m., Seattle Espresso, 7th Street, Allentown, 435-9096.

UPCOMING

FRIDAY 9/23
NIGHT EYES!, experience the power of your own night vision on wooded trails stalking wolf spiders and other night creatures, Wildlands Conservancy, 3701 Orchid Place, Emmaus, 8-10 p.m., register by 9/16, \$4.50 members, \$6 nonmembers, 965-4397.

SUNDAY 9/25
MACK TRUCKS TRUCK RODEO, 200 top truck drivers test their skills to raise money for the Easter Seal Society, 8 a.m.-5 p.m., Mack Engineering and Development Test Center, Allentown, 879-1000

SUN. - MON. 9/25-26
SEVENTH ANNUAL GOOD SHEPHERD CELEBRITY CLASSIC, stars of film, television and sports; Sunday, silent and live auctions and dinner show with comedian Norm Crosby, former lead with The Platters Duke Daniels, The Modernaires; Mon-



The Danzante Dance Company presents a flamenco demonstration Tuesday at the Stage Door at Lehigh as part of the university's Hispanic Heritage Week.

day, golf and tennis tournaments at Lehigh Country Club with Yogi Berra, Curt Simmons, Art Mahaffey, Chuck Bednarik, Jim Taylor; ticket information and reservations 776-3550.

THURSDAY 9/29
SOUTH BETHLEHEM NEIGHBORHOOD CENTER DINNER, prepared by the Ladies Altar Society of St. John Windish Lutheran Church, 5-6 p.m. art display, 6-6:30 p.m. church fellowship, 6:30 dinner followed by meeting and entertainment, St. John's Windish Lutheran Church, E. Fourth St., Bethlehem, reservations by 9/15, send \$12 to SBNC, attn: Dinner Committee, 700 Evans St., P.O. Box 791, Bethlehem, PA 18016-0791.

FRIDAY 9/30
MUSEUM SEEKERS, visits to New York's finest museums, for people 55 years and

older, Cloisters Museum, Cathedral of St. John the Divine and St. Patrick's Cathedral, 7:30 a.m.-6 p.m., Northampton Community College, Green Pond Rd., \$10 admission, bus trip and lecture \$39, 861-4551.

FRI. - SUN. 9/30-10/2
THE CELTIC CLASSIC, three days of Irish, Scottish and Welsh traditions, including Kips Bay Ceili Band, Highland Games Athletic competition, bagpipe competition, 5-11 p.m. Friday, 9 a.m.-11 p.m. Saturday, 10 a.m.-8 p.m. Sunday, 18th Century Industrial Quarter, Bethlehem, 868-9599

SATURDAY 10/1
FALL FUNGI, search for and learn about wild mushrooms such as Old Man's Beard, Hen of the Woods, Chanterelle, Wildlands Conservancy, 3701 Orchid Place, Emmaus, 8-10 p.m., register by 9/20, \$8 members, \$10 nonmembers, 965-4397.

SUNDAY 10/2
WALKTOBERFEST, 8-mile walk from Muhlenberg College to benefit the American Diabetes Association, 9-10 a.m. check-in, 10 a.m. start, registration 867-1055, fax 867-5755
LOCKS AND LEAVES RIDE, a 2 1/2-hour ride starting at 1 p.m. on Hugh Moore Park's canal boat Josiah White II, featuring live entertainment, food, and a hand-operated lift lock demonstration, reservations \$23 per person, 250-6700.

4-H CENTER OPEN HOUSE, CHICKEN BBQ AND HORSE SHOW, view club displays and projects, animals, famous barbecue chicken, 10 a.m. horse show, noon-4 p.m. open house, Bushkill Center Rd., Nazareth, 746-1970.

SATURDAY 10/8
GOURMET SHOPPING TRIP TO NEW YORK CITY, sponsored by The Good Shepherd Auxiliary, includes gourmet shops from Bloomingdale's to Zabar's, send check for \$26 to Good Shepherd Auxiliary, c/o Hannalore Fisher, 4276 Church View Rd., Emmaus, PA, 18049, before 9/24, 776-3125.

BIG BACKYARD NATURE CLUB, each Saturday through May children 4-6 years old follow Nature through the seasons by hiking, playing games, doing crafts and hearing stories, 9-10:30 a.m. or 11 a.m.-12:30 p.m., register by 9/30, Wildlands Conservancy, 3701 Orchid Place, Emmaus, \$36 members, \$43 nonmembers, 965-4397.
RANGER RICK NATURE CLUB, each Saturday through May, children ages 7-10 explore the natural world in great detail, 1-2:30 p.m. or 3-4:30 p.m., register by 9/30, Wildlands Conservancy, 3701 Orchid Place, Emmaus, \$36 members, \$43 nonmembers, 965-4397.
VOYAGES, each Saturday through May, children ages 11-14 embark on an exploration of the world of natural science, 1-2:30 p.m., Wildlands Conservancy, 3701 Orchid Place, Emmaus, \$36 members, \$43 nonmembers, 965-4397.

SUNDAY 10/9
A TIME OF THANKSGIVING, harvest festival, Museum of Indian Culture, Fish Hatchery Rd., Allentown, 797-2121.

THURSDAY 10/13
LEHIGH VALLEY CRIME STOPPERS GOLF TOURNAMENT, to benefit local crime prevention, 9 a.m., Shepherd Hills Golf Course, Wescosville, registration contact Trooper Robin Pardoe 861-2026, or Mike Pfahler 868-8000.

FRIDAY 10/14
MUSEUM SEEKERS, lectures and visits to New York's finest museums, for people 55 years and older, Metropolitan's "Origins of Impressionism" exhibit of Willem de Koonig's work, 8 a.m.-6 p.m., Northampton Community College, Green Pond Rd., \$12 admission, bus trip and lecture \$39, 861-4551.

SATURDAY 10/15
THIRD ANNUAL MULE AND VIKING ART AND CRAFT SHOW, more than 100 artists and crafters, 9 a.m.-4 p.m., John Deitrich Field House, Muhlenberg College's Life Sports Center, 23rd and Liberty Sts., Allentown, \$2, 821-3305.

SATURDAY 10/15
FEST-O'-FALL, crafts, hayrides, food, haunted barn, beekeepers, reptiles, 11 a.m.-4 p.m., Wildlands Conservancy, 3701 Orchid Place, Emmaus, 965-4397.

SAT. - SUN. 10/15-16
FALL FEST '94, crafters, food vendors and entertainers sought for family event at Camp Olympic that benefits Pennsylvania Playhouse, 10 a.m.-4 p.m., for applications and information contact Backstage Productions, P.O. Box 24, Breinigsville, PA 18031, 776-6555.

SUNDAY 10/16
SAUCON VALLEY HALLOWEEN PARADE, 2 p.m., Hellertown, registration forms available at Hellertown Borough Hall, Lower Saucon Township Hall, Prosser's and Yeager's drugstores, Carson's Hardware, First Valley Bank, Valley Voice offices, volunteers needed, 838-9474.

FRIDAY 10/21
HARVEST MOON HOWL, explore trails in the quiet hush of nightfall, 7-9 p.m., register by 10/19, Wildlands Conservancy, 3701 Orchid Place, Emmaus, \$4.50 members, \$6 non-members, children half price, 965-4397.

80¢ Per Line

Classified

Bethlehem's marketplace

Call 868-4444

#	CLASSIFICATION	150	Boats	330	Instruction	540	Musical Instruments	750	Tools
030	Announcements	180	Building Supplies	360	Jewelry	570	Produce	780	Travel
060	Antiques	210	Business Opportunities	390	Lawn & Garden	600	Real Estate	840	Wanted to Rent
070	Articles for sale	240	Business Services	420	Lost & Found	630	Real Estate Wanted	870	Wanted to Trade
080	Articles wanted	250	Cars, Trucks, and Vans	450	Machinery	660	Recreational Vehicles	900	Work Wanted
090	Auctions	270	Employment	480	Mobile Homes	690	Rentals		
		300	Garage/Yard Sales	510	Motorcycles	720	Sporting Goods		

announcements

BETHLEHEM EAGLES soccer club has openings for new players. Minimum age 15. Fee required. To play in senior division of LV soccer league. Fall and spring. 882-2439 or 865-0270.

FLEA MARKET Saturday Oct. 1 9am-1pm Edgeboro Moravian Church 645 Hamilton Bethlehem 866-8793

★ **Computer BBS:** Mystic Mansion. On-line games, GIGs of shareware and more, all free. Call via modem: 691-1254.

LEHIGH VALLEY singles for Christ Sept. 10th 7:00PM Moravian Christian Ed. Building Bethlehem call 867-7252 or 759-7352 for more information.

★ **LOSE 12 lbs - 10 hour** wafer diet! Send \$1, large SASE for sample: Nature's (B) Super, 3206 Patterson Dr, Bethlehem, PA.

The Bethlehem Star's Classified deadline is Friday at noon. Call 868-4444 today.

PRAYER TO the blessed Virgin, never known to fail: Oh most beautiful flower of Mount Carmel, fruitful vine, splendor of Heaven, blessed mother of the Son of God, immaculate virgin, assist me in my necessity. Oh star of the sea, help me and show me here you are my mother. Oh holy Mary, mother of God, queen of heaven and earth, I humbly beseech you from the bottom of my heart to succor into necessity. (Make request.) There are none that can withstand your power. Mary conceived without sin, pray for us who have recourse to thee. (Three times.) Say this prayer for three consecutive days, then you must publish it and it will be granted to you.

UNIQUE & Interesting Italian Family Cooking by Carmella Genovese. Low fat, high fiber. For more info, call Carmella at 867-2693.

articles for sale

200 DOLLS for sale: some 40 yrs old. All kinds of dolls. Must sell; very reasonable. 694-0825

30TH REUNION: Fountain Hill HS class of 1964. Contact Renae Kudzik Behrens. 868-2372

ART BOOKS, all periods & artists, \$5 - \$35. Language tapes, rec ords & books, \$3 to \$45, flexible. 867-8823

BEDROOM SET 3 piece antique white provincial adjustable bed frame brass-look headboard inc. \$185 868-4272

BIKE - BMX boys Huffy 20". \$30. Call 867-4286.

BIKE - boys 20 inch. \$20. 861-9203

BIKE: MONGOOSE Californian 20" BMX, chrome, \$100 or best offer. 868-8421

BOOMBA, \$70. 2 space heaters, \$40. Oval formica table, 3' x 5'6", \$40. Garage door opener, (2) remote cts, \$40. 694-0225

BOYS' CLOTHING, size 8. 14 items; jeans \$3, sweatpants \$1 - \$2, suit \$5. Excellent condition. 264-8992

BRITTANY SPANIEL: male with papers, beautiful pup. \$100 to good home. Leave message: 868-3763.

BROWN LEATHER coat raglan sleeves misses size 14 like new \$125; rust leather coat button-on blue fox collar misses 14 \$150 868-6647

CADILLAC BUMPER set, front and rear, \$10. 694-0399

KEYSTONE DODGE, INC.

'94 DODGE CONVERSION VAN

Auto., AC 4 Cpts. Chairs, Sofa Bed

STARTING AT \$18,492

6 TO CHOOSE FROM

'95 PICKUP V-10

IN STOCK!

IMMEDIATE DELIVERY



'94 TRUCK BLOWOUT SALE

70 IN STOCK TO CHOOSE FROM

'94 DODGE PICKUP

SHORT BED, LONG BED 2 & 4 WHEEL

STARTING AT \$13,999

10 TO CHOOSE FROM

INTREPID

23 TO CHOOSE FROM

* Includes Factory and College Rebates. Tax and Tags Extra.

KEYSTONE DODGE

2350 Lehigh St. ON THE AUTOMOBILE, ALLENTOWN 791-1900

CAR AND TRUCK CENTER MED. DUTY ISUZU TRUCKS

articles for sale

SUPER NINTENDO & five tapes, asking \$150. 867-5194

THREE BLADE adjustable helper springs for pickup vans & class C motor home. Cost new \$152. Sell \$40. 867-1788

TIGER CUB hat & T-shirt, size 10-12, excellent condition, \$5 for both. Call 865-4534.

TIRES NEEDING plugs two P195-70R14. \$4 each from Plymouth. Acclaim call 867-1364

TOOLBOX, \$20. Green blazer, size 12, \$2. Child's spring coats, size 12, \$4. Camel hair coats, size 12, \$10. 866-8425

TRAILERS IN STOCK! Huge selection of cargo, landscape, utility, car haulers, open and closed snowmobile trailers. O'Donnell Bros, 8030 Wm. Penn Hwy., Beth. Twp. 691-7700

WADING POOL: 10' x 2 1/2', liner, used one year, cartridge pump, skimmer, foot bath, chlorine holder, \$95 or best offer. 866-6548

WALNUT CURIO shelf box 36"x20" \$40; 6' artificial Xmas tree \$30; shower stall doors and track \$15; 7 Nancy Drew Books \$15. 865-0295

WASHER & dryer, Maytag good condition \$50. each call 868-0226

WEDDING GOWN: beautiful & never worn, size 9 - 10, originally \$600; sell \$190. New tiara & veil, \$40. W. gown \$55. 867-8823

WEDDING GOWN: white, custom made, never worn, size 12-14, \$599. 866-2446

WOOD STOVE and 1/2 cord of wood \$300 or best offer 867-6685

WORD PROCESSOR: Magnavox Video Writer, excellent condition, ideal for students. \$200. 865-9553

articles wanted

A-B-E ALL ANTIQUES WANTED: \$1000-\$5000-\$25,000 highest cash paid on spot for one item / entire estate old or carved furniture, china, oriental rugs, paintings, quilts, clocks, jewelry, sterling, dolls, toys, books, military items, etc. violins, saxophones, guitars. old items from attic to cellar family business 45 years Apple & Eve 821-9400 your call is welcome

A-B-E ALL ANTIQUES Old furniture, oriental rugs, china, toys, clocks, lamps, trains, dolls, music boxes, jewelry, sterling silver, oil paintings, cut glass, Hummels, teddy bears, Disneyana. IN BETHLEHEM 26 YEARS All calls welcome Don't settle for less... call VALLEY ANTIQUES 865-3880 pager: 798-0687

CRIBS, STROLLERS, car-seats, toys, cradles, changing tables, playpens, etc. Very good condition only. 746-9460

boats

1989 THUNDERCRAFT 16ft. boat & trailer, 90hp., all accessories included. \$5500. 691-2957

BETHLEHEM: Two story Colonial: 4 br, lr, dr, fr, kit, finished bsmt, 2 car gar, c/a, hardwood flrs, many updates. Great location, 268 Apollo Dr. \$162,000. Call for appt: 691-2499.

business opportunities

COUPLES WHO enjoy meeting people, working together. As little as \$125 gets you started in a business of your own. We assist. Phone local Amway distributor and get the whole story. Call 974-8086.

When you buy a car, please say "I saw your ad in The Bethlehem Star."

business services

HOMEOWNERS: NEED Cash? Refinancing, Equity Loans, Bill Consolidation, etc. Credit problems solved. 690-5500

cars, trucks and vans

1969 Indy 500 pace car 350 4-Speed Great Condition 14,500 MUST SELL 398-1360.

1988 DODGE CARAVAN SE at, ps, AM/FM cassette, cruise, new tires, new timing belt, new inspection. 90k excel. condition \$5200. obo 868-0523

68 CAMARO CONVERTIBLE red with white top, all original excellent condition 60k mi. 327 4-sp drive A classic investment \$10,800 call 868-2162

BUICK SKYHAWK 1987: 4 door, 4 cylinder, AT, a/c, ps, pb, tw. Good condition. Asking \$2875. 865-5968

CHEVROLET CONCOURSE 1976: blue, passed inspection, good condition, must see to appreciate. 867-0728

CHEVROLET ASTRO LT 1990: AWD, auto, dig dash, all options including roof rack & trailer package. Very nice. Asking \$13,000 or best offer. 867-7714

CHEVROLET II 1965: excellent running condition, very clean, 68,000 original miles, just inspected, good till 8/95. \$3995. 691-6054 - call after 5 pm.

CHEVROLET PICKUP 1983: 3/4-ton utility body. hy. dy. ladder rack, 350 eng. AT. Very good condition. Asking \$2,600. Call 820-7017, leave message.

CHEVROLET S-10 BLAZER 4x4 1990: 2 door, Tahoe package, AT, 4.3 liter V6, fully loaded, low mileage, very good condition. \$12,995. 691-6350

CHEVROLET S-10 BLAZER 4x4 1990: 2 door, Tahoe package, AT, 4.3 liter V6, fully loaded, low mileage, very good condition. \$12,995. 691-6350

CORVETTE 1972: 350, 4 speed, blue, t-top, 110k, a/c, ss brakes, very good condition, must see, \$9,500. Call 866-5151.

DODGE CHARGER 1987: 5 speed, 2.2 ltr, excellent shape, garage kept, 68k, inspected till 11/94. \$2,800 - great back to school car. 691-2944

FORD THUNDERBIRD 1978 loaded dark blue with white top runs and looks good. \$800. OBO 866-0814

GEO METRO 1991: 4 dr hb, 1 owner, 5 spd, 26k original mi, still under warranty, brand new tires, 50 mpg, priced to sell. 865-2636

TITLE TRANSFERS immediate plates notary Kathryn Rushford 52A East Broad St Bethlehem 882-5754

HYUNDAI EXCEL 1986: 5 speed, needs motor repair. New brakes and tires, 110k mi, asking \$300 or best offer. 867-4372 eves / weekends.

MERCEDES 220S 1964: leather & wood interior, 4 speed column, 40,000 documented miles, appraised in '89 at \$7,900 by Tom Troxell, asking \$6,900. 866-6433

OLDSMOBILE CUTLASS SUPREME coupe 1989: excellent mechanical condition, nice clean car, moving, priced to sell at \$7,695 negotiable. 691-0572

OLDSMOBILE CUTLASS SUPREME International CP 1989: red / silver, fully loaded, extras, 45k miles, excellent condition, \$8800. Call 865-3864.

PLYMOUTH COLT GL 1991: 2 door, 4 cylinder, AT, pb, ps, a/c, rear def, 22k. \$7,000. 865-1067

PONTIAC FIREBIRD FORMULA 1987: excellent condition, 5.0 liter, 59k, AT, T-tops, a/c, am/fm cassette, cruise control. Asking \$4800. 791-5264, leave message.

PONTIAC FIREBIRD 1985: 6 cyl, a/c, ps, pb, asking \$2,800. Call Lou after 6. 691-2246

PORSCHE 924 1978: standard 4 speed, electrical fire, needs 1/2 interior & windshield & wiring. \$900. Call 866-1281 after 6 pm.

SAAB 900S 1983: auto, a/c, ps, pb, pw, sunroof, new battery & tires w/ alloy wheels, am/fm cassette, looks & runs great, 100,000 miles, \$2900. Call 867-2150.

THUNDERBIRD TRIPLE 1976: white, moon roof, mag wheels, 68,000 mi, immaculate, \$6,000, new tires, always garaged. 691-5936

TORONADO 1977: METALLIC blue, white vinyl top, never in snow, garaged since new, new tires, 28,000 miles, like new. \$9,500. 691-5936

VOLKSWAGEN RABBIT DIESEL 1979: engine rebuilt, extremely economical. \$700. 867-9605

WOW! YOU must see this car! '89 Honda Accord Lxi: a/c, AM/FM cass, AT, PW, 74k. Exc. cond. Must sell. Asking \$7400. CALL NOW. 868-1823

employment

HIRING 200 immediately!! Phone surveys, no sales, no exp. PT/FT days, eves, wknds, \$5.50/\$6 + near Dorney Park. Call Amy, M-F 10-4 at 398-6629.

UNHAPPY WITH YOUR HOURS? Merry Maids cleans homes M - F daytime hours only, no nights or weekends. Top performers earn top pay. Paid vacation & holidays. Teammate positions open immediately. Call 866-8428.

The Bethlehem Star is delivered to 25,000 homes every week. Call 868-4444 to place your ad.

garage/yard sales

1925 MAIN St. 9/17 10-3 collectibles, dishes, tools, from 1930-'80's and lots more.

instruction

IBM COMPUTER tutoring and consulting. \$50 / hour. Call 867-9300.

Make your ad stand out in a box. Call 868-4444 and ask for details.

TUTORING: permanently certified teacher - elementary, grade level reading, math, study skills and spelling. Children's literature study groups and creative writing workshops also forming. Call 691-3698 for information & registration.

mobile homes

12 X 44 2 BR c/a, w/d, enclosed porch, Airport Rd, avail immed. \$9,800. Price negotiable. Call Joan, 867-1190.

FIRST AMERICAN HOME FUNDING: a decade of mobile & modular home sales financing, insurance, appraisals: apply by fax, phone, or mail; tel: 791-7847, fax: 791-7848.

musical instruments

GUITAR AMP: Martin 160 watts with built-in reverb and chorus. Sounds great. \$150 negotiable. Call 691-5296.

real estate

L. SAUCON Twp - Saucon Valley Terrace: Bldg for sale by owner. 1/2 + acre Highland Court cul-de-sac incl. water & sew; 1/2 + acre Amhurst Drive cul-de-sac, water, sew., has like new bldg/garage (36x40), many uses - no deed restrictions. Ask for Julie or Michael 691-7700 or 691-0946

Sell those dust collectors... Run a classified ad in The Star.

DICK MILHAM USED CAR OPERATIONS

48 HOUR USED CAR SELL-OFF!

FRIDAY & SATURDAY ONLY! EVERY REASONABLE OFFER WILL BE ACCEPTED!

<p>'89 PLYMOUTH SUNDANCE 4-DR.</p> <p>4 Cyl., Auto. Trans., Factory Air, 37,000 Mi. (#45629A)</p> <p>ONLY \$5695</p>	<p>'91 CHEVY TIARA DIAMOND HI-TOP CONVERSION VAN</p> <p>8 Cyl., Auto., Fully Loaded, 29,000 Miles, #T45641A.</p> <p>\$17,850</p>
<p>1990 CHEVY CAVALIER RS CPE.</p> <p>Cyl., Auto Trans., Factory Air, 16,000 Mi. (#30065)</p> <p>\$7995</p>	<p>'88 CHEVY CORSICA SDN.</p> <p>4 Cyl., Auto. Trans., Factory Air, Stereo, 57,000 Mi. (#3070)</p> <p>ONLY \$6495</p>

OVER 150 OF LEHIGH'S FINEST USED CARS & TRUCKS AT SELL-OFF PRICES!

<p>'89 CHEVY CORSICA LT SDN.</p> <p>6 Cyl., Auto Trans., Factory Air Stereo, 52,000 Mi. (#50023A)</p> <p>ONLY \$6995</p>	<p>'87 CHEVY MONTE CARLO SPORT CPE.</p> <p>8 Cyl., Auto Trans., Factory Air, 23,000 Mi. (#3071)</p> <p>ONLY \$6995</p>	<p>'89 CHEVY ASTRO CL PASSENGER VAN</p> <p>6 Cyl., Auto Trans., Fully Loaded, 50,000 Mi. (#155037A)</p> <p>ONLY \$9995</p>	<p>'86 OLDS CIERA LS SDN</p> <p>4 Cyl., Auto., Air, 54k! (#3026)</p> <p>\$5995</p>	<p>'86 CHEVY CAVALIER Z-24</p> <p>Coupe, 6-Cyl., Auto, Air, Stereo, 60k! (#3057)</p> <p>\$5995</p>	<p>'89 CHEVY CAVALIER RS SDN</p> <p>4 Cyl., Auto., Air, 45k! (#40347A)</p> <p>\$6495</p>
<p>'93 FORD T-BIRD LT</p> <p>6 Cyl., AT, Fully Loaded, 8k Mi. (#3051A)</p> <p>\$14,900</p>	<p>'93 CHEVY CAVALIER RS SEDAN</p> <p>4 Cyl., AT, Factory Air, 12k Mi. (#3043)</p> <p>\$10,900</p>	<p>'88 CHEVY NOVA SDN.</p> <p>4 Cyl., Auto Trans., Factory Air, 46,000 Mi. (#3040)</p> <p>ONLY \$5995</p>	<p>'93 CHEVY S-10 TANOE BLAZER 4-DR.</p> <p>6 Cyl., Auto Trans., Fully Loaded, 14,000 Mi. (#3069)</p> <p>ONLY \$21,500</p>	<p>'92 PLYMOUTH SUNDANCE SDN.</p> <p>4 Cyl., Auto Trans., Factory Air, Stereo, 35,000 Mi. (#3062)</p> <p>ONLY \$7495</p>	<p>'92 CHEVY BERETTA GT</p> <p>6 Cyl., Auto., Loaded, 42,000 Mi. (#40405A)</p> <p>\$11,900</p>
<p>'89 CHEVY CAPRICE ESTATE WGN.</p> <p>8 Cyl., Auto Trans., Fully Loaded, 9 Pass, 52,000 Mi. (#2994)</p> <p>ONLY \$8995</p>	<p>'93 CHEVY HI-TOP CONVERSION VAN</p> <p>8 Cyl., Auto Trans., Fully Loaded, 11,000 Mi. (#13063)</p> <p>ONLY \$22,900</p>	<p>'83 OLDS CUTLASS SUPREME CPE.</p> <p>6 Cyl., Auto Trans., Factory Air Stereo, 77,000 Mi. (#40291A)</p> <p>ONLY \$3995</p>	<p>'93 CHEVY CORSICA LT SDN</p> <p>6 Cyl., Auto., Air, 18k! (#3052)</p> <p>\$10,900</p>	<p>'91 CHEVY LUMINA EURO SDN.</p> <p>6 Cyl., Auto Trans., Factory Air Stereo, 35,000 Mi. (#3061)</p> <p>ONLY \$11,500</p>	<p>'91 CHEVY TAHOE EXT. CAB</p> <p>6 Cyl., Auto., Air, 43k! (#T45351A)</p> <p>\$10,900</p>
<p>'91 CHEVY LUMINA EURO</p> <p>6-Cyl. Sedan, Auto, Air, 35k! (#3061)</p> <p>\$11,500</p>	<p>'89 CHEVY CAVALIER CPE</p> <p>4 Cyl., Auto Trans., Factory Air, 56,000 Mi. (#3023)</p> <p>ONLY \$6495</p>	<p>'91 CHEVY LUMINA APV VAN</p> <p>6 Cyl., Auto., Air, 35k! (#T3059)</p> <p>\$12,900</p>	<p>'91 CHEVY CAPRICE CL WGN</p> <p>8 Cyl., Auto., Air, 32k! (#3058)</p> <p>\$13,500</p>	<p>'91 CHEVY K-2500 SCOTTSDALE 4x4</p> <p>8 Cyl., Auto., Air, 65k! (#T45525A)</p> <p>\$13,900</p>	<p>'91 CHEVY S-10 BLAZER 4x4</p> <p>6-Cyl., Auto, Fully Loaded, 46k! (#155009A)</p> <p>\$15,900</p>
<p>'91 CHEVY CAMARO RS CPE.</p> <p>8 Cyl., Auto Trans., Factory Air Stereo, 32,000 Mi. (#3064)</p> <p>ONLY \$11,500</p>	<p>'93 CHEVY LUMINA APV</p> <p>6 Cyl., Auto., Loaded, 16k! (#45499A)</p> <p>\$16,900</p>	<p>'92 CHEVY ASTRO CONV. VAN</p> <p>6-Cyl., Auto, Loaded, 24k! (#T45600A)</p> <p>\$16,900</p>	<p>'94 CHEVY CAVALIER VL COUPE</p> <p>4 Cyl., 5 Spd., Factory Air, 6000 Mi. (#40435A)</p> <p>\$9995</p>	<p>'88 FORD TAURUS LX WGN.</p> <p>8 Pass, 6 Cyl., Fully Loaded, 35,000 Mi. (#3067)</p> <p>ONLY \$8495</p>	<p>'91 CHEVY CORSICA SDN.</p> <p>4 Cyl., Auto Trans., Factory Air Stereo, 38,000 Mi. (#3066)</p> <p>ONLY \$8995</p>

LEHIGH VALLEY'S USED CAR PROFESSIONALS! 410 WEST UNION BLVD. (610) 868-8511 CHAMPIONS OF THE USED CAR MARKET!

TRADES ARE NOT REQUIRED TO RECEIVE THESE PRICES. BUT TRADES COULD BE ACCEPTED.

NUMBERS WE LIKE Join an elite group of the most cared-for BMW owners in the world. Daniels BMW is privileged to call them customers... and is committed to keeping them. With service that captured BMW's top national honor for customer satisfaction: the "President's Club Award."

NUMBERS YOU'LL LIKE One of seventeen BMW dealers in the U.S. selected, Daniels shares this achievement with customers who value quality, luxury and service. You can be one of them. Visit Daniels BMW. And discover the Daniels difference.

\$349 PER MONTH - 36 months 325i, 5-speed, fold down seat, Leatherette trim

36-month, closed-end lease. 1st payment, security, doc, tags, \$3500 down payment and all taxes due at delivery. 10,000 miles per year. Purchase option at lease end \$18,589.

DANIELS The Lehigh Valley's most experienced luxury car dealer. 1327 Tilghman St. • Allentown • 820-2950

real estate

RELOCATION - must sell: lg victorian single, prime loc, west end Allentown, 4 br, lr, dr, sun rm, fp, hardwood flrs, leaded glass doors, stained glass, newly renovated, lg eat-in kit, off street 2 car parking, close to schools & parks. Steal at \$94,900. 432-6652

UNDER \$500/MO. I can show you how to own a home for under \$500/mo. A Town, Beth, or Easton. Free consultation. \$3,000 cash and good credit required. Call Jeff Epstein at RE/MAX 100. 366-4328

recreational vehicles

OLDER MOTOR home: sleep 6, fully equipped, good mechanical condition. Needs roof repair. Must sell - \$2500 or best offer. 867-4372 eves / weekends.

rentals

EASTON AREA - furnished 2nd fl. 3 rms & bath, pvt ent. nt/hw. No pets. \$445. 868-3512

SECTION 8 - 3, 4, or 5 bed- room house for rent on Carlton Ave. If you have certificate call Jeff at RE/MAX. 366-4328

travel

ROME: BY Apple Tours, 8 days, November 1 - 8, 1994. Swissair, 4 star hotel, full buffet breakfast included at \$879. Call Marion, 868-5660.

work wanted

CHILDCARE: LOTS of T.L.C. Experienced mom with exc. ref. Full time only. Near Rte 191 in Beth. 866-2251

WE DO WINDOWS: custom draperies, mini-blinds, pleated shades & verticals. Shop at home service. Call for free consultation. BARE THREADS - 974-9137.

FIX-IT-MAN

Ceramic tile, plumbing, electrical, appliance hook-up, carpentry, painting, floor covering, wallpaper. Free estimates. 866-9574

YARD CARE: shrub, hedge trimming, gardening, weed pulling, general maintenance. R. Stauffer, 266-4254.

INTERIOR DESIGN Consultations / complete interiors. 882-0860

CHILD CARE, available full time, part time, any age, Fountain Hill-Salisbury area, near hospital. 867-6286

AC & HEATING technicians: repairs, service & installs. Cleaning of gas & oil furnaces & boilers. Refrigerant recovery. Call 954-5387.

The Bethlehem Star is delivered to 25,000 homes every week. Call 868-4444 to place your ad.

TOP-NOTCH SLATE repair: 3rd generation slate expert, copper flashing, box gutter repair, free roof inspection. We treat your home like it was our own. 610-954-8307.

TOP-NOTCH HOME repair: custom carpentry, decks, doors, windows, trim, kitchens, bathrooms, fascia & soffit work, slate & shingle roofing. From your roof to your basement. 610-954-8307.

CHILDCARE PT/FT in my Saucon Valley home, any age, lunch, snacks. Call 691-6762 anytime.

QUILTER NEEDS work. Heirloom quality hand quilting of your quilt tops and wall hangings. Prices negotiable. 865-0116

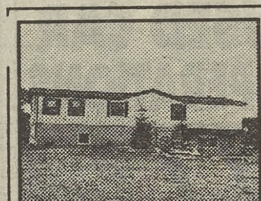
CAULKING, GLAZING and weatherstripping. Winterize now. Also complete remodeling service, fully insured. Call Steve at Recchio Construction, 868-5761.

The Bethlehem Star's Classified deadline is Friday at noon. Call 868-4444 today.

Save with The Star Classifieds

Ask Your REALTOR About The GUARANTEED ADVERTISING SALES PROGRAM

Home Buyers Guide For:
Eastern PENNSYLVANIA & Western NEW JERSEY



QUIET BUSHKILL TOWN- SHIR 4 bedrooms, 2 1/2 baths, den with stone fireplace. All on a very nice 1 acre lot. \$109,900. CALL TONY FALCONE (610) 366-3180.

RE/MAX 100
610/691-6100/258-9600
1-800-468-7353



VA Buyer w/\$1200 cash can purchase this 3 BR townhouse. Other w/5% can pay \$455/per month. C.A. new windows, oil heat & more! \$71,900.

REALTY WORLD
Benchmark (610) 868-2633



Prime Palmer Commercial - approx. 155 ft. frontage, great location! Call for details. Ask for Dawn Warner.

CENTURY 21
Fran Doyle, Inc.
694-0400 or 1-800-525-5711



PALMER TWR - Pretty, perfect 4 BR & 1.5 bath cape on corner lot. Well maintained & updated! C/A, gas heat, garage, mod. kit., DR w/corner cabinet. Sensible floor plan for large or small family! \$109,900. #1-01032-94.

Real Estate AMERICA
610/865-7776
610/559-7600



PICTURE PERFECT... sprawling brick ranch home in impeccable condition including all of the "bells & whistles". 18 hill-top acres...spectacular view. Convenient location...must see. \$395,000.

Great American
REAL ESTATE COMPANY
(610) 863-6205
1-800-777-6205



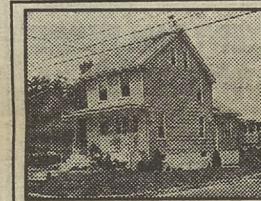
BETHLEHEM - Freshly painted bi-level ready to move into! Home features 4 bedrooms, 2 full baths, lower level family room, all done in neutral decor. Oversized 2 car garage, concrete patio and great yard. \$3102. \$135,900.

WEICHERT REALTORS
(610) 865-5555



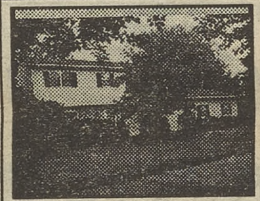
\$79,900. 3 BR brick twin, large eat-in modern kit., oversized, off-street parking, move-in condition. E#90390. 258-0808.

PATT, WHITE COMPANY, REALTORS
Better Homes and Gardens



A SUPER PRICE... for a single family home on a landscaped corner lot in Freemansburg. Freshly painted inside and outside, new kitchen with sliding door to a deck, updated bathroom... PRICED TO SELL NOW AT ONLY \$79,900.

The Prudential Paul Ford REALTORS
(610) 253-6123



BETHLEHEM - Center hall brick and aluminum colonial w/mature landscaping. Family room leads onto deck & patio. 4 large bedrooms, 2 full baths. Very well maintained and ready to move into. \$3131. \$164,500.

WEICHERT REALTORS
(610) 865-5555



JUST ADD SHUTTERS... \$69,800. Recently renovated 3 or 4 BR with 2 car garage & mature trees. Call Ron Broker/Owner.

JOELLA REALTY
610-588-5584



WEST BETHLEHEM. An attractive money-maker for the serious investor who wants a good return. Three one bedroom units...fully rented...code free at settlement. ONLY \$84,900. CALL BILL WINTERBURN 865-2783.

RE/MAX 100
610/691-6100/258-9600
1-800-468-7353



CONTEMPORARY - on 3 1/4 acre lot. Lots of trees, greenery & babbling brook. Asking \$194,900. Ask for Kitty Sulfare.

CENTURY 21
Fran Doyle, Inc.
694-0400 or 1-800-525-5711



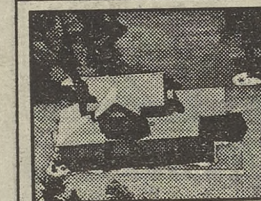
PALMER TWR You will want to inspect this inviting 4 BR home! Lrg kit overlooking a spacious yard, fireplaced LR, beautiful wrap around covered flagstone porch patio, central air and vacuum. More! \$169,500.

The Prudential Paul Ford REALTORS
(610) 253-6123



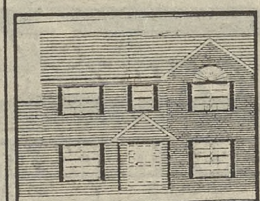
REDUCED \$7000 - OWNER TRANS. Located in W. Bethlehem, move in cond. 4 BR, 1 1/2 B. sq. ft. which offers LR w/beam cell. DR, ultra mod. kit., 19x14 lam rm, oversized 1 car garage, 3 zoned oil HW heat, 20x16 pavilion in rear yard. \$112,900. CALL JIM WEPPEL 253-2147 OR VOICE-MAIL 356-3082.

RE/MAX 100
610/691-6100/258-9600
1-800-468-7353



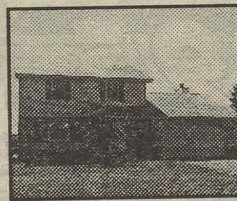
LIKE NEW - 4 bedroom contemporary. Cherry kitchen, jacuzzi bath, 2 car garage, fireplace, owners motivated. Ask Hope Nagy for details!

CENTURY 21
Fran Doyle, Inc.
694-0400 or 1-800-525-5711



NEW CONSTRUCTION - 2 Story Colonial on corner lot. Brick front, side entry, 2 car gar, porch, 3 BRs, 2 1/2 baths, FR, eat-in kit w/island. Within walk. dist. to public schools. \$149,900. Call BETSY or BOB 366-3005/366-2491. Avail. for quick settlement. Other models available.

RE/MAX 100
610/691-6100/258-9600
1-800-468-7353



PALMER TWR 3 BR brick colonial offering abundant natural lighting, CA and vacuum, FR w/vaulted ceiling, skylight, FP, 3 BRs, 2 1/2 baths, nicely landscaped yard, 2 car garage. Only \$149,500.

The Prudential Paul Ford REALTORS
(610) 253-6123



EASTON - Why rent! 3 bedroom brick row w/economical heating system, sellers are motivated, some rooms freshly painted. Home to be code free for settlement. \$2849. \$45,500.

WEICHERT REALTORS
(610) 865-5555



LOVELY - Fountain Hill Twin priced to sell at \$68,000. Finished basement, new roof & elec. New carpet. Gas heat. Call Linda Gross at 610/250-8880.

COLDWELL BANKER
HERITAGE REAL ESTATE
4030 Wm. Penn Hwy., Easton
610/250-8880



\$129,900. 3 BR (possible 4th) Cape Cod, FR, HW floors, 2 car detached garage, private 1.28 acre. 258-0808.

PATT, WHITE COMPANY, REALTORS
Better Homes and Gardens



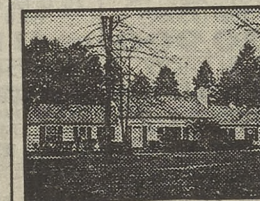
MONEY MAKER! Five unit in very good condition. 20 minutes North of Allentown. Call for details. Asking \$110,000.

REALTY WORLD
Benchmark (610) 868-2633



BETHLEHEM - Charming brick and aluminum twin w/inlaid HW floors in LR & DR. Hardwood throughout, french doors between LR & Florida room. New roof in '91 and siding in '92. B3092. \$91,000.

WEICHERT REALTORS
(610) 865-5555



SECLUDED 1+ ACRE - Pretty brick & cedar Cape near Monocacy Park, 4 bedrooms, 3 baths, family room, study, fireplace, central air, awning covered flagstone patio. 2 car garage. \$299,900.

FISHBURN REALTY CO.
691-2650



HISTORY & LUXURY This 1812 stone home, with its authentic beams, stenciling & 4 FPs, is not only in sterling condition - it's beautifully updated with a skylit great room, new country kit., luxurious marble bath & solar-heated pool. Its 2.17 acres (with 5 more available) are quiet & private, yet minutes from golfing & I-78. Offered at \$489,000. Call for color brochure.

CAROL C. DOREY
Real Estate
(610) 346-8800



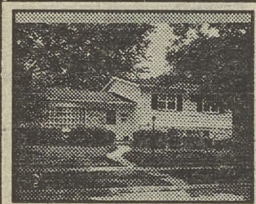
MIDWAY MANOR - ALLENTOWN. Charming brick 4 BR Cape w/garage. Rec room, deck, gas heat, mod. kit., roof new in '88. A warm & inviting house at an affordable price. \$92,900. #1-00832-94.

Real Estate AMERICA
610/865-7776
610/559-7600

Homeseller's Guarantee
A new Bethlehem Star advertising program
Now... for homsellers that carries with it...
A guarantee!
Ask your local realtor for details.

Ask Your REALTOR About The GUARANTEED ADVERTISING SALES PROGRAM

Home Buyers Guide For: Eastern PENNSYLVANIA & Western NEW JERSEY



\$159,900. 3 BRs, 2 1/2 baths, large corner lot. Two car garage, central air. Updated kitchen & more.

WEICHERT REALTORS
(610) 865-5555



ADORABLE - AFFORDABLE \$77,700. Prime condition, 2 BRs with hardwood floors, garage, landscaped yard on corner lot.

JOELLA REALTY
610-588-5584



PHILLIPSBURG HILL - Nice 8 room home featuring 4 bedrooms, nice fenced-in yard and a detached one car garage. All neighborhood homes are well-kept. Excellent starter home. Asking \$35,900.

JOSEPH F. TOLOTTA REALTORS
610-252-3435



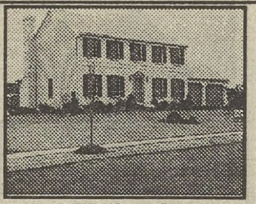
SIX SHOOTER... Load your investment portfolio with this great 6 unit apart. bldg. Well maintained with a history of long term occupancy. Owner willing to do financing with adequate down payment. Asking \$160,000.

The Prudential Paul Ford REALTORS®
(610) 253-6123



AWAY FROM TRAFFIC but close to everything! Offers 3 BRs, 1 1/2 baths, hardwood floors, dining room, full basement w/possible family room. Only asking \$75,500.

PATT, WHITE COMPANY, REALTORS®
Better Homes and Gardens
610/865-0033



WAGNER FARMS - Beth Twp. pretty brick cottages but orig. owner has landscaped & added a deck of FR which gives one panoramic view of So. Mountain. Decorated w/ today's light neutral colors. It's easy to move in w/no decorating costs. The heat pump & full insulation has kept heating costs to a minimum. The home is on a premium lot. Probably has the highest elevation in Wagner Farms and the street is a quiet Cd-De-Sac. Price \$189,900. CALL STAN KAPLAN AT 366-2611 FOR MORE INFO.

RE/MAX® 100
610/691-6100/258-9600
1-800-468-7353



EDGEBORO AREA - Truly charming cape with spaciousness unperceived until you enter the 13'x20' LR w/F.P. FDR, new 13'x22' FR w/F.P. & 3BRs. 2 car gar., library, tree-lined avenue. \$179,000. #1-01064-94.

Real Estate AMERICA
610/865-7776
610/559-7600



BRICK RANCH ON GREAT LOT! - Beautiful setting, good for indoor & outdoor entertaining. Ask for Linda Stocklas.

CENTURY 21 Fran Doyle, Inc.
694-0400 or 1-800-525-5711



BETH TWP/WAGNER FARMS - Gorgeous center hall Col. w/in-ground pool. \$209,500. - \$209,500 W/WH Super cond. Beautifully decorated & landscaped, this 4 BR, 2 1/2 bath col. situated on 1/2 ac. lot close to cul-de-sac offers a neutral decor w/color accents, LR, formal DR w/bay window, ultra kit w/breakfast nook opens to FR w/bk. FP, CAC, 2 car gar. well situated in-ground pool leaves plenty of yard for recreation. Won't last! CALL AL ZARCKY AT 636-1825 for further details.

RE/MAX® 100
610/691-6100/258-9600
1-800-468-7353



\$154,900. NE Beth Colonial, 5 BRs, 2 baths, 2PR, 3 family rooms, fireplace, 2 car garage. #E90661. 258-0808.

PATT, WHITE COMPANY, REALTORS®
Better Homes and Gardens



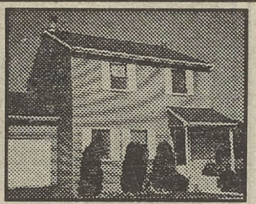
DURHAM TWP - Exceptional stone farmhouse situated on 5+/- acres w/southern exposure. Home dates back to 1760 w/features such as a Keeping room w/walk-in FP, custom updated kitchen w/double ovens & jennaire. A must see home! B2671. \$635,000.

WEICHERT REALTORS
(610) 865-5555



WILSON BORO - Absolute delightful twin totally remodeled. Gourmet kit., 3 BRs plus den/4 BR. Oil heat, new windows. \$79,900. #1-00905-93.

Real Estate AMERICA
610/865-7776
610/559-7600



FORKS TWP. - Wonderful end unit townhouse with 3 bedrooms, 2 1/2 baths, fireplace, wood deck & full basement with patio doors to outside. Use of pool, tennis courts and club house inc. \$108,800. P-4419.

WEICHERT REALTORS
(908) 454-1717



BETHLEHEM TOWNSHIP COLONIAL - hardwood floors, fireplace, 2-car garage. Asking \$159,900. Ask for Vikki Orth.

CENTURY 21 Fran Doyle, Inc.
694-0400 or 1-800-525-5711



LOWER NAZARETH - Lots of rm in this Newburg Manor Dutch Colonial set on corner lot over 1/2 acre. 3-4 BRs, 2 1/2 baths, 1st floor fam rm with fp, lovely Florida rm, lower level fam rm + office. Asking \$196,900. CALL RITA SMITH (VOICE-TEL) 366-2931. (RES) 868-4632 (89342).

RE/MAX® 100
610/691-6100/258-9600
1-800-468-7353



\$285,000. California Contemporary on 2.42 acres. decks, balconies, wooded lot. Quality throughout. Lower Saucon.

REALTY WORLD®
Benchmark (610) 868-2633



BETHLEHEM TWP - Large & lovely colonial like new! Four BRs, 14'x22' 1st floor FR & also newly finished rec room. Gas heat, A/C & a tree-lined corner lot. \$154,900. #1-01052-94.

Real Estate AMERICA
610/865-7776
610/559-7600



\$152,900 - 3 bedroom farm house. Two car detached garage. Situated on 9+ acres. Call Carwyn Vough at 863-6205.

Great American REAL ESTATE COMPANY
(610) 863-6205
1-800-777-6205



\$209,000 - Spacious two-story 4 BR/2.5 bath Colonial amidst rustic charms. Quiet country road, close to I78, immediately avail. Family room w/FP, oak floors, master bath, walk-in closet, picture-perfect.

John MONAGHAN GROUP AFFILIATES, INC. REALTORS®
RIEGELSVILLE (610) 749-0433



HANOVER TWP - Splendid 3,500 sq. ft. residence on treed lot. Gracious 15'x17' entrance leads to generous rooms. 4 BRs, O Heat, c/a, s. por. & decking. Remarkable mast. suite w/11' x 11' bath. \$294,900. #1-01098-94.

Real Estate AMERICA
610/865-7776
610/559-7600



\$219,900. Cedar home. 2 AC w/view, 3 BRs, den, FR, cherry kit., skylights, 2 wood stoves, deck w/heated tub. #E88406. 258-0808.

PATT, WHITE COMPANY, REALTORS®
Better Homes and Gardens



DON'T JUST RENT! With 5% down, pay \$411 P&I, or rent w/option. Call for details on large W. Bethlehem 3 BR+ economical gas townhouse! \$64,900.

REALTY WORLD®
Benchmark (610) 868-2633



SOLD
This move-in condition home can be seen to be appreciated. Rooms with lower level FR, sewer and laundry. Solar panel on roof complements heating costs. Only \$129,900.

The Prudential Paul Ford REALTORS®
(610) 253-6123



\$129,900 - 2 story w/3 BRs, 1.5 baths eat-in kit. + formal DR w/atrium to patio. LF fireplace, 1 car garage. Call Sharon 691-6666.

COLDWELL BANKER®
HERITAGE REAL ESTATE
4030 Wm. Penn Hwy., Easton
610/250-8880



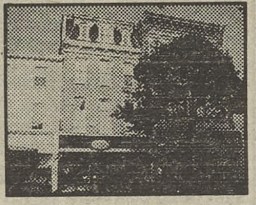
EASTON - Handsome, elegant building on an historical site. Well maintained w/new roof, many replacement windows & freshly painted. Large rooms and high ceilings, architectural detail evidenced throughout. \$239,000. B3115.

WEICHERT REALTORS
(610) 865-5555



DON'T SWEAT THE PRICE. This home has everything you need: beautiful woodwork in living room, redone kitchen, covered deck in rear, 2 car garage. Around \$50,000.

REALTY WORLD®
Benchmark (610) 868-2633



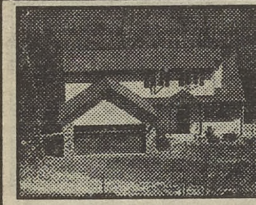
INVESTMENT PROPERTY - MAIN STREET IN HISTORIC BETHLEHEM - Prime investment property. 1 store and 3 large apartments. Net income \$28,000/year. \$235,000. CALL JEFF EPSTEIN 366-4328.

RE/MAX® 100
610/691-6100/258-9600
1-800-468-7353



SHADY COMFORT can be yours in this Moore Twp. Blevel on a wooded 1/2 acre lot. 4 BR, 2 baths, FR has brick FP w/insert, deck and patio, quiet location. ASK FOR GREG SMITH. \$127,900. 13R018E

John MONAGHAN GROUP AFFILIATES, INC. REALTORS®
NAZARETH (610) 759-7833



Reposessed Contemporary! 3 yr. old home nestled in 2.3 wooded acres. Unique floor plan. Convenient location. \$139,800.

Great American REAL ESTATE COMPANY
(610) 863-6205
1-800-777-6205



FOUNTAIN HILL - Charming, vintage all brick 3 story home. HW floors, two FP's, stained glass windows in LR, beautiful oak woodwork thruout. 5 BRs, 1 1/2 baths. 2 car detached garage. \$117,000. Call DIANE GERGAR 366-2573.

RE/MAX® 100
610/691-6100/258-9600
1-800-468-7353



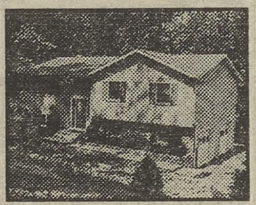
LOPATCONG - Hot tub, sun room, 3 BR ranch, garage. \$132,000. FHA, VA, Conv. homes from \$77,900 up.

COPPER KETTLE REALTY
800-582-4004
Serving Somerset, Hunterdon, Warren, NJ And Eastern Pennsylvania



EDGEBORO AREA - Charming stone & alum. Dut. Col. w/4 BRs, LR & DR have built-ins, FR + rec rm & gar. for 3 cars. Gas heat, c/a. Two FP's & flagst. patio add to the substantial character. \$264,900. #1-00988-94.

Real Estate AMERICA
610/865-7776
610/559-7600



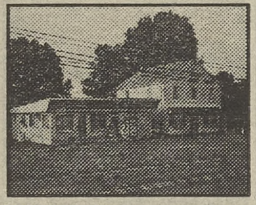
WILLIAMS TWP Country living on 3.65 acres, beautiful home featuring 3 BRs, wide plank finished floors, ultra mod kit. w/center island, tongue and groove finished FR. Large decks to watch deer. \$149,900.

The Prudential Paul Ford REALTORS®
(610) 253-6123



\$89,500. 3 unit Single, good condition, good return, possible financing help, 2 car garage. #E84916. 258-0808.

PATT, WHITE COMPANY, REALTORS®
Better Homes and Gardens



\$295,000. Opportunity - versatile commercial property. 2 separate buildings, one includes living quarters, locate don busy Rt. 191, Nazareth, PA.

Great American REAL ESTATE COMPANY
(610) 863-6205
1-800-777-6205

Ask Your REALTOR About The GUARANTEED ADVERTISING SALES PROGRAM

Home Buyers Guide For: **PENNSYLVANIA & Western NEW JERSEY**



IN-LAW, TENANT OR GUEST
This absolutely mint home with 2 level garage has all the possibilities. \$127,000.

JOELLA REALTY
610-588-5584



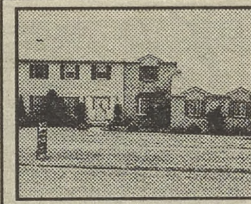
Well Kept Bangor Victorian - with wrap around porch, new windows, furnace, vinyl siding and more. \$105,000.

Great American REAL ESTATE COMPANY
(610) 863-6205
1-800-777-6205



18 ACRE FARMETTE MOORE TOWNSHIP - 3 bedroom house in good condition. Barn plus 3 outbuildings. \$219,000. CALL CURT MUSCHOCK 252-6814.

RE/MAX® 100
610/691-6100/258-9600
1-800-468-7353



SAUCON VALLEY - Tucked away on 1.8 acres is this lovely brick colonial w/ everything! Prettily decorated, it has 4 BRs, FR w/FP, rec room w/bar, 1st floor office & a hobby room. \$274,900. #1-01104-94.

Real Estate AMERICA
610/865-7776
610/559-7600



Just \$47,500 buys a large 3 BR corner townhouse with 1 1/2 baths, an oversized garage, deck and more.

REALTY WORLD®
Benchmark (610) 868-2633



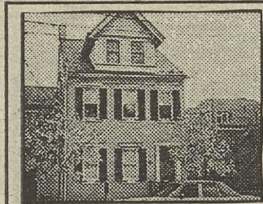
PALMER TOWNSHIP Originally an 1860 school house and later known as "the hanging gardens of Palmer," this updated 4 BR, 1 1/2 bath home represents a knotch in history and is worthy of your inspection. \$159,900.

The Prudential Paul Ford REALTORS®
(610) 253-6123



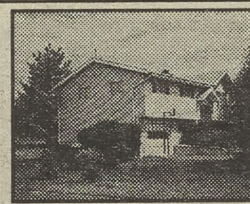
WILSON TWO UNIT TWIN - Central air, 2 complete apartments. Asking \$79,900. Ask for Barb Bartholomew.

CENTURY 21 Fran Doyle, Inc.
694-0400 or 1-800-525-5711



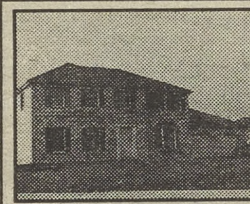
HISTORIC BETHLEHEM - 2 UNIT. Lovely blend of old world with modern convenience. Each elegant unit features 2 BRs & den, 2.5 baths, wide plank floors, deep sills, etc. You won't be disappointed! \$254,900. #1-00981-94.

Real Estate AMERICA
610/865-7776
610/559-7600



BETHLEHEM TWR - Charming split level on over 1 acre features: above ground pool, storage shed and covered patio off family room. 3 nice sized bedrooms, 1 1/2 baths. 1st floor offers office/den. B3043. \$123,900.

WEICHERT REALTORS
(610) 865-5555



This wonderful Colonial is ready for you to move right in. 4 BRs, 2 1/2 baths. Spacious kit. opens to the lg. FR complete w/stone FP. Within close/easy commute to all major interstates. Only \$196,500. Call Jen Young for your private showing.

COLDWELL BANKER®
HERITAGE REAL ESTATE
610/250-8880



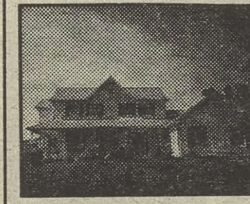
OWNER WILL HELP! If you are planning buying a home, consider this lg 4 BR home w/ new vinyl insulated winds and lots of storage areas. Owner will consider some financial assistance to a qualified buyer. Only \$69,500.

The Prudential Paul Ford REALTORS®
(610) 253-6123



POOL LOVERS DELIGHT - You're family will surely enjoy this lovely home in Palmer Twp. w/ a park like setting and in-ground heated pool w/16x36 Cabana & a changing room, C/A, FP in FR. 2 car gar. CALL BOB COLE FOR BROCHURE (610) 691-6642 OR 759-8288.

RE/MAX® 100
610/691-6100/258-9600
1-800-468-7353



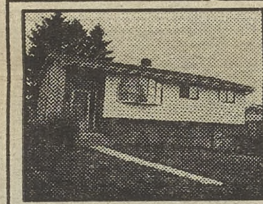
MOORE TWR - Beautiful city 2 story in mint cond. Features incl. a wrap-around porch, hardwood flrs, 4 bedrms, 2 1/2 baths, 2 car gar, cen air. All this plus more on a 1 acre lot with a view. 134110E. \$192,500.

John MONAGHAN GROUP AFFILIATES, INC. REALTORS®
NAZARETH 610/759-7833



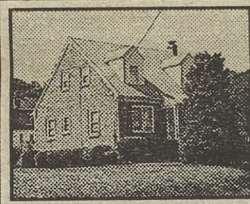
CHARMING - 5-BR VICT. From the beautiful HW flrs. and open staircase to the elegant crystal chandelier and scones to the scenic mural over the fm. FP in the very large LR, you will be overwhelmed with its elegance. Exit into the DR through the beveled glass French doors. New ultramod kit. Relax on upstairs balcony Oversized gar. Very spacious home. \$68,500.

REALTY WORLD®
Benchmark (610) 868-2633



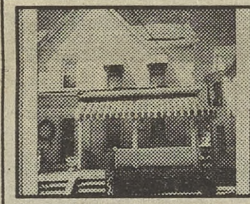
\$120,000. Raised rancher with convenient in-law quarters including 2nd kitchen. Fenced yard. Bethlehem Township.

REALTY WORLD®
Benchmark (610) 868-2633



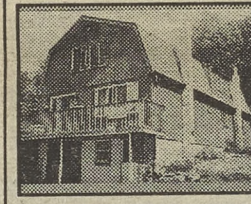
FIRST TIME HOME BUYER - Neat as a pin Cape Cod located in Fountain Hill. 3 BRs, 1 1/2 baths, DR & eat-in kit. Home offers HW floors throughout & fenced yard. Central Air. Some appliances remain. CALL BETH MCLAIN ANYTIME AT 366-3010. PRICED AT \$93,000.

RE/MAX® 100
610/691-6100/258-9600
1-800-468-7353



Exceptional 3 BR twin. Convenient to schools, etc. Tastefully remodeled. Move in today!!! \$69,900.

Great American REAL ESTATE COMPANY
(610) 863-6205
1-800-777-6205



COUNTRY LIVING AT ITS BEST! - 3.3 acres. Williams Twp, rustic chalet. Asking \$139,500. Cal for Carolyn Hill.

CENTURY 21 Fran Doyle, Inc.
694-0400 or 1-800-525-5711



HILLCREST COLONIAL - Phillipsburg - Lovely Colonial with fireplace, corner cabinet, first floor laundry, 2 baths, heated, finished basement, garage and nice yard. A must to see!

WEICHERT REALTORS
(908) 454-1717



EXCELLENT buy in North Bethlehem. This all brick home with 3 bedrooms, 1 1/2 baths, rec room w/bar, boasts an enclosed side porch off living room, large covered patio and a spectacular back yard. ONLY \$107,000. CALL MARY OMDAHL 866-7548 OR 366-3083.

RE/MAX® 100
610/691-6100/258-9600
1-800-468-7353



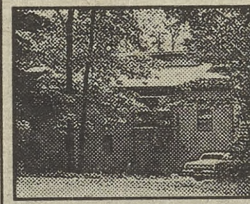
FORKS TWR - Central air and custom awnings for summers & beautiful stone fireplace for winters, makes this pretty ranch your house for all seasons. Neat as a pin w/3 bedrooms and 2 car garage. B2936. \$149,900.

WEICHERT REALTORS
(610) 865-5555



BETHLEHEM TWR - Newly constructed & ready to choose your carpeting! Large FR w/bay area & FP. Basement is light & airy and easy to finish for additional living space. Home has 4 bedrooms, 2 1/2 baths. B3052. \$196,900.

WEICHERT REALTORS
(610) 865-5555



SECLUDED CONTEMP. - on w/ded 1 acre lot. 2 new tiered dks offer great outdoor enjoyment for relaxing or ent. Spacious liv. rm w/cath. ceiling opens to very large ultra-mod. kit. Super master bedrm suite w/private bath & dres. rm, walk-in dres. in 2 of 3 other bedrms. Anderson wind. & sliders. \$132,500. CALL TIM MCLAUGHLIN 366-3420.

RE/MAX® 100
610/691-6100/258-9600
1-800-468-7353



At The Top Of The Hill - that's where you'll find this unique 4 BR, 1 1/2 bath blevel on almost an acre in the Whitehall area. DR has sliding doors to a 2 level deck w/in above grd pool. Master BR has new carpet and wallpaper. Central A/C, FR w/coal stove and a 2 car gar. w/openers. \$139,900. Ask for Jon Miller.

CENTURY 21 Kocsis Realtors
610-252-6999/610-863-4151



WEST EASTON - Wilson school district. Brand new 2 story features: 3 bedrooms, oak kitchen, wrap-around deck and garage. \$119,000. CALL AL MOLL AT 253-4077.

RE/MAX® 100
610/691-6100/258-9600
1-800-468-7353



HISTORIC BETHLEHEM - A rare combination of elegance & historical beauty. Magnificent visually & updated practically. It offers 4 BRs, 3.5 baths, double LR w/FP, study, den, C/A, HW floors, high ceilings. \$239,000. #1-01057-94.

Real Estate AMERICA
610/865-7776
610/559-7600



\$144,900. 2 1/2 story home w/3 BRs, oversized 2 car garage, 16x20 shop, on 1 acre. #E89640. 258-0808.

PATT, WHITE COMPANY, REALTORS®
Better Homes and Gardens



\$123,000. Attractive 2 story colonial on a beautifully wooded 1 acre lot. 4 BRs, convenient location. Immediate occupancy available.

Great American REAL ESTATE COMPANY
(610) 863-6205
1-800-777-6205



Repossessed!!! Bi-level on 1.4 acres, large home with "open concept", versatile floor plan, 3.5 bedrooms, central air possible, lease purchase. Close to schools & shopping. \$126,800.

Great American REAL ESTATE COMPANY
(610) 863-6205
1-800-777-6205



PERSONAL PARADISE - Is yours! This East Allen residence is for the hedonist: imp. pl. dks, landscaping surrounds a 3 BR open concept contemp. Fabulous new kit., master suite, FR, rec room, exercise room & office. \$249,900. #1-01081-94.

Real Estate AMERICA
610/865-7776
610/559-7600



\$72,900. 3 BR townhome w/1 1/2 bath, family room w/woodstove, 1 car garage, DR, backs up to park area. #E88734. 258-0808.

PATT, WHITE COMPANY, REALTORS®
Better Homes and Gardens



BETHLEHEM - Charming solid stone ranch w/1 car garage & great yard. Fully equipped eat-in kitchen, large living room w/stone fireplace, huge family room on LL, 2 nice sized bedrooms. B2851. \$106,500.

WEICHERT REALTORS
(610) 865-5555



COUNTRY COLONIAL - Now reduced to \$179,900, see this immaculate 3 BR, 2 1/2 bath, center hall on 2 acres. HW floors, family room w/FP pool & deck. 2 car garage plus much more.

JAMES S. GAROFALO REALTORS
(610) 258-3300/(610) 588-6888



COLLEGE HILL - All brick 3 story w/wrap around porch, 3 car garage, 2nd floor covered porch, private yard, new bath & 4+ bedrooms, a great value. \$139,000. CALL PETER HEWITT (610) 252-1717.

RE/MAX® 100
610/691-6100/258-9600
1-800-468-7353



W. ALLENTOWN - Three BR brick twin with large rooms & a garage! Hardwood floors, nice sunroom, 130' lot w/private yard, oil heat. \$83,500. #1-01078-94.

Real Estate AMERICA
610/865-7776
610/559-7600

Ask Your REALTOR About The GUARANTEED ADVERTISING SALES PROGRAM



Home Buyers Guide For:



Eastern PENNSYLVANIA & Western NEW JERSEY



FORKS TOWNSHIP - Reduced. Sum. entertaining on the large two tiered dk. 4 bedrms. 2 1/2 baths, bright lg eat-in kit. \$164,900. CALL BETSY DUGA 366-3005.

RE/MAX 100

610/691-6100/258-9600
1-800-468-7353



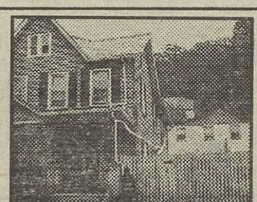
GREEN POND FARMS - 18th Cent. restored stone/stucco farmhouse w/ wide window sills, exposed beams, wide plank flooring. New systems - "pulse" furnace, AC, ultra mod. kit., cer. baths & great rm. Tucked away in priv. grove. \$267,000.

REALTY WORLD
Benchmark (610) 868-2633



BETHLEHEM - Pride of ownership shows in this well kept older home. Five bedrms or 4 with 1st fl den. Large rec rm on low lev. with neutral carpet. One car attached gar. A must see home! B3147. \$124,900.

WEICHERT REALTORS
(610) 865-5555



Selling below cost!! Large, well kept home with economical gas heat. 3 car garage, fenced yard, covered patio, nicely landscaped. \$67,000.

Great American REAL ESTATE COMPANY
(610) 863-6205
1-800-777-6205



\$81,900. Large twin in desirable neighborhood, formal DR, LR w/FP, 3BRs, eat-in kit., 3 porches, great buy. #E91628. 258-0808.

PATT, WHITE COMPANY, REALTORS
Better Homes and Gardens



W. BETHLEHEM - Tastefully decorated, well-located Tudor style 3 BR twin. FP graces large LR, FDR, ultra mod. oak kit. Large deck, lovely garden. 1.5 baths. Gas heat. Minimum Downl Owner financing possible! \$89,900. #1-00949-94.

Real Estate AMERICA
610/865-7776
610/559-7600



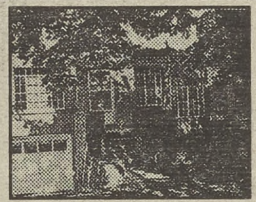
COUNTRY CLUB HEIGHTS - This 9 room brick home has lots to offer - stone FP, mod kit. w/cherry cabinets, full ceramic split baths, slate foyer, hardwood floors, plaster walls, patio. Only \$129,750.

The Prudential Paul Ford REALTORS
(610) 253-6123



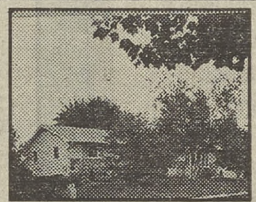
\$97,900. Classic brick cape on a large corner lot. Unique landscaping, fireplace...charm!! Owner is a licensed agent. Mark Cotturo.

Great American REAL ESTATE COMPANY
(610) 863-6205
1-800-777-6205



BETHLEHEM - This is so special! A Tudor style stone & brick 30's townhome w/ art deco touches...2 possibly 4 BRs, cath. ceiling in the LR, H/W floors & a great FR w/dry bar. Come & fall in love. \$79,500. #1-00870-93.

Real Estate AMERICA
610/865-7776
610/559-7600



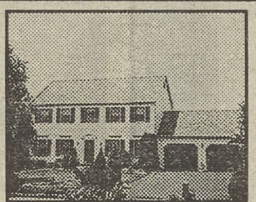
PALMER RANCH - Central air, security system, garage, beautiful, 3 bedrooms. Ask for Barb Hartigan.

CENTURY 21 Fran Doyle, Inc.
694-0400 or 1-800-525-5711



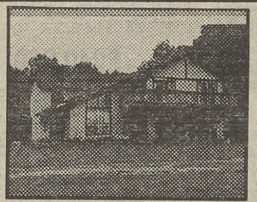
PHEASANT RIDGE - Highly detailed col. built by the Lehigh Valley Builder of the Year offering views of rolling countryside and mtns. Locate in Williams twp. within easy access to I-78. Call for details. \$339,000.

The Prudential Paul Ford REALTORS
(610) 253-6123



BEAUTIFUL POINTE NORTH - Quality and Pride of Ownership is evident in this just listed 4 BR, 2 1/2 B. Col. Owners had this fine home built with spec. Great sized bedrooms, super form. DR and 21x14 fam rm w/tp. Fenced yard and a deck with awning. Offered at \$189,900. CALL PETER F. TOMA JR. (610) 691-0012/366-2998.

RE/MAX 100
610/691-6100/258-9600
1-800-468-7353



WOODLAND ESTATE ON 5+ ACRES. Energy efficient 4000 sq. ft. contemporary home has 4 BRs, 3 FPs, MBR suite, 5 zone heat, inground pool. \$298,000.

JOELLA REALTY
610-588-5584



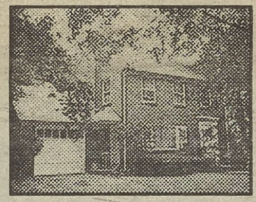
EAST HILLS - 3203 Shakespeare Rd., Beth. 3 bedrm, 1 1/2 ba. split level with a lovely setting on a 100'x150' corner lot. Scr. patio surrounded by mature trees. C/A, cedar closets and an elaborate sec. sys. Kit. appli. 1 year old. Loc. 1 block to East Hills Sch.

WEICHERT REALTORS
(610) 865-5555



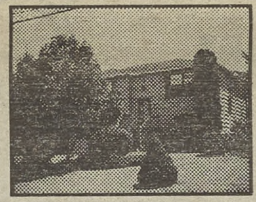
MOORE TWP - \$159,900. 2 story Colonial on 1/2 acre corner lot. 4 bedrooms, 2 1/2 baths, fam rm w/FP, 25'x12' redwood deck. Professional quality landscaping. Home is in excellent condition and features a quiet yet convenient location. CALL TONY FALCONE (610) 366-3180.

RE/MAX 100
610/691-6100/258-9600
1-800-468-7353



\$119,900. Solid brick 3 BR in W. Bethlehem, formal DR, 1 1/2 baths, attached 1 car garage. (91659)

REALTY WORLD
Benchmark (610) 868-2633



FORKS TOWNSHIP - A must see single for only \$116,500. Offering 4 BRs, 1 1/2 baths, one car garage. Super deck & large tree-lined lot. Serene and private location, very convenient to major routes. CALL MARLENE KIICK (610) 366-2651.

RE/MAX 100
610/691-6100/258-9600
1-800-468-7353



SALISBURY TWP - \$53,900 SINGLE! An upside down brick house w/large LR, new big kit., 2 BRs, new carpeting, recent roof. Oil heat. Why Rent! #1-01088-94.

Real Estate AMERICA
610/865-7776
610/559-7600



BETHLEHEM - Very special house, gorgeous remodeled kitchen w/center island, jennaire range, loads of cabinets! 4 wonderfully sized bedrooms, family room w/free standing stove, security system and more! B3126. \$139,000.

WEICHERT REALTORS
(610) 865-5555



VICTORIAN LACE - Would frame well this turn of the century 3 BR home. Mod., but retaining its charm, this 1.5 ba home is on historic Market St. Bangor Oak stairs, pat., fence, FDR, eat-in kit, gas heat. Redu. to \$81,600. Seller pays 2% closing costs. #1-01015-94.

Real Estate AMERICA
610/865-7776
610/559-7600



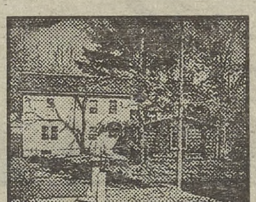
NEW CONSTRUCTION - Owners decorated, now have to leave. 2 story foyer, 12x29 kitchen, vaulted family room, 20x14 master suite. Over 3000 sq. \$243,900. Call Becky anytime 800-584-3149.

RE/MAX 100
610/691-6100/258-9600
1-800-468-7353



HILLCREST - Lrg. fam. home in great area has 5 BRs, 2 1/2 baths, 1st-floor FR 37x21, 2 FPs. Ingr. pool for family fun, plus 2-car gar. Great value. \$143,900. 20166P.

John MONAGHAN CORP., NEW JERSEY REALTORS
(908) 859-3130



COLONIAL - with original stone walls & fireplace in DR, new baths & kitchen, enjoy this historical Colonial with present day conveniences. Fenced in play area. Outbuilding for business. Home Warranty provided for buyers. \$149,900. P-4339.

WEICHERT REALTORS
(908) 454-1717



ALL PLAY AND NO WORK - That's how you'll feel about this spec. 2 bedrm, 2 ba. condo...A marvel of sun, light and space. Fabulous touches like cathedral ceiling, marble tp and deck. Easy-care throughout w/tennis courts & swim. pl around corner. ONLY \$89,500. CALL DOUG BOSSERT 366-2451.

RE/MAX 100
610/691-6100/258-9600
1-800-468-7353



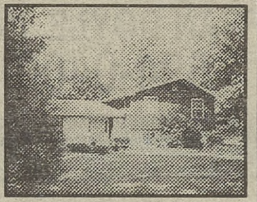
\$81,500 - This home offers lg. LR and lg. DR, 3 lg. bedrms. The M. bedrm has a M. bath with a walk-in closet. An open concept kit. and sliding drs go to a patio. Freshly painted in 1994, this home is ready to move in. Won't last long at this price.

CENTURY 21 McPeck Realty, Inc.
250-0821 867-2400



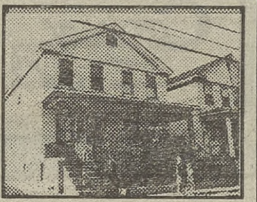
FOUNTAIN HILL TWIN - w/open airy feel, wood floors, 3 BRs, fenced yard, fresh paint, porches, attic, some orig. woodwork. CALL BARBARA FRAUST FOR MORE DETAILS 366-2493/691-6100.

RE/MAX 100
610/691-6100/258-9600
1-800-468-7353



Lush landscaping awaits you in this 3 BR, 2 bath large Lower Saucon home. Art studio & workshop w/private entrance could be mother/daughter home. Just under 1 acre - owner wants quick closing! \$154,900.

Gold key realty inc.
610/258-3706



WILSON - Spacious twin w/3 BRs, 1st floor family room, over-sized master, deck, oil heat, mod. kit. Garage too! \$82,900. #1-001005-94.

Real Estate AMERICA
610/865-7776
610/559-7600



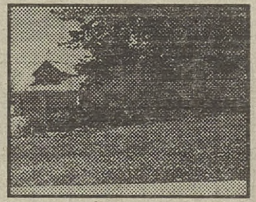
CENTER HALL COL. in Wilson Boro offering a fireplaced LR, 4 BRs, french doors opening onto a covered porch, patio, 3 car park, pad and a double lot. Needs updating and TLC. PRICED REDUCED TO \$83,500.

The Prudential Paul Ford REALTORS
(610) 253-6123



SPACIOUS PALMER TWP RANCH in great condition. Offers flexibility of a complete independent apartment. Very large rooms, stone front & fireplace, 2 car gar., tile floors and many new features. Asking \$149,000. CALL IGGY MARKOW FOR MORE DETAILS (610) 253-4550.

RE/MAX 100
610/691-6100/258-9600
1-800-468-7353



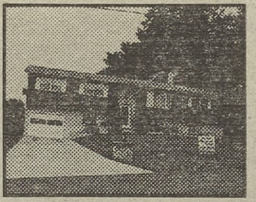
\$575,000. Renovated farmhouse w/ office & shop, 4 BRs, 2 1/2 baths, outbuildings, 15+ acres, call for color brochure. #E69535. 258-0808.

PATT, WHITE COMPANY, REALTORS
Better Homes and Gardens



BETHLEHEM TWP. Remodeled farmhouse, 7 rooms, 3 bedrooms, 2 baths, sunroom with jacuzzi. 1/4 acre with barn with 3 car garage and loft. Asking \$134,900.

SIG KUHNE REALTORS
(908) 689-6411



BETHLEHEM TWP - Perfect move in condition blevel with 5 bedrooms, 3 full baths! This one owner home offers 2 kitchens, extra storage and a 44x12 covered patio. B3141. \$142,850.

WEICHERT REALTORS
(610) 865-5555



CHARMING COLONIAL in excellent condition. Great floor plan & fantastic updates! Ideally located on a corner lot in Nazareth. \$126,800.

Great American REAL ESTATE COMPANY
(610) 863-8205
1-800-777-6205



BUSHKILL TWP Unique Prop. offering best of old & new! Main home offers 3 FPs, 2 BRs, 1.5 baths, HW flrs & cer. tiling. Orig. 1860 home currently used as workshop. Lg. post & beam barn has many possibilities! 12 acres w/stream feeding spring, led pond. Subdiv. approved. Very secluded. Call AGGIE KOE for showing & details. 559-9189/366-2627. Reduced to \$295,000.

RE/MAX 100
610/691-6100/258-9600
1-800-468-7353

