

# The Police Department gets a new look

[The Bethlehem Gadfly](#) [Police](#) March 4, 2021

🌀 Latest in a series of posts about the Bethlehem Police 🌀

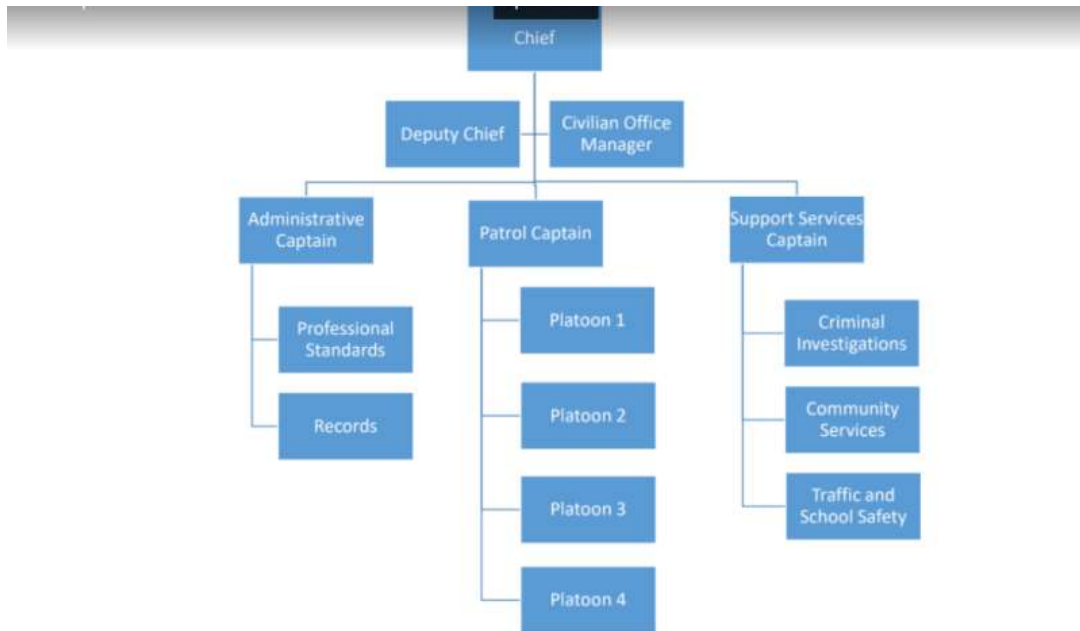
## Bethlehem Police Department 2021 Reorganization Chart Public Safety Committee meeting, March 2, 2021

For better images of the charts, click the “Reorganization Chart” link above.

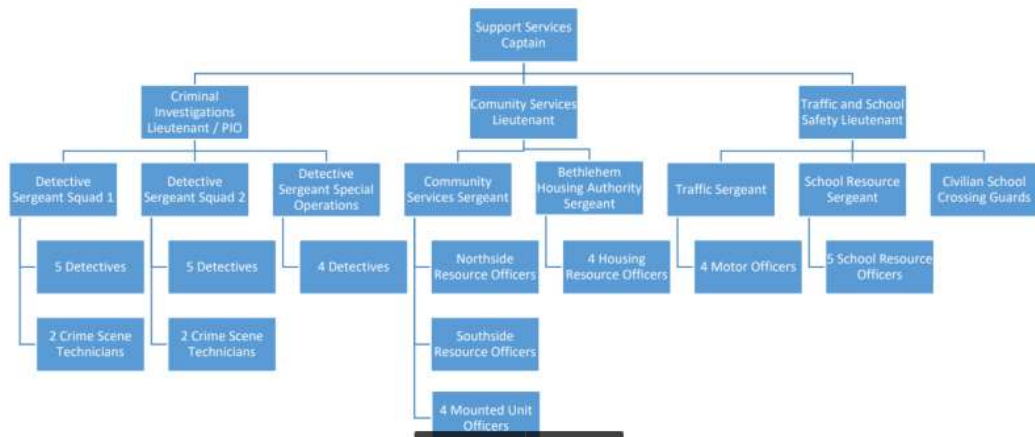
At the Public Safety Committee meeting March 2, our Chief Kott laid out her new organizational structure for the police department.

The old structure can be found [here](#): divisions of Police Administration, Professional Standards, Patrol, and Criminal Investigation.

Here is the new structure: Administration, Patrol, and Support Services.



In her [presentation](#) to Council, Chief Kott gave special emphasis to the new “Support Services” division shown here, which is broken down into Criminal Investigation, Community Services, and Traffic and School Safety:



In an interesting analogy, Chief Kott likened the relationship between the Patrol division and the new Support Services division as the relationship between the Emergency Room and Specialty Practices in a hospital setting.

**Audio Player not available in this archive**

The Chief's full presentation is written out on the **reorganization chart** document linked above and can heard on the **meeting video**.

Gadfly will return later to capture some of the discussion after the Chief's presentation.