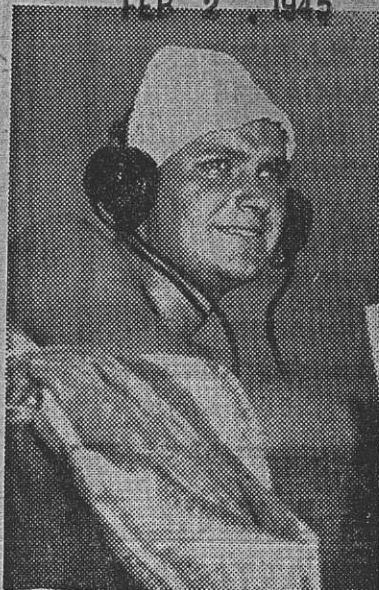


Thoder, Joseph

Standing Watch

FEB 2 1945



Coast Guardsman Joseph Thoder, coxswain, 909 East 6th Street, stands his watch aboard the Coast Guard-manned Invasion Transport on which he is stationed. His ship was one of the first to enter Lingayen Gulf in the invasion of Luzon Island in the invasion of the Philippines. Thoder is in charge of a landing barge and stormed ashore in the first wave in the attack on Luzon. He is a veteran of the campaigns of Majuro, Eniwetok, Saipan, Tinian and Leyte and has seen plenty of action.

February 2, 1945