

Group 1 August 16 - September 14 | Reception September 5

Group 2 | September 20-October 26 | Reception October 3

Crayola Gallery | Banana Factory

25 W. Third St. | Bethlehem, PA

Receptions: September 5 & October 3 | 6-9 PM

**ArtsQuest Annual
Resident Artists'
Exhibition
2014**

GROUP 1

August 16 - September 14



Virginia Abbott
studio 337
Deer Pendant
Silver



Erin Anderson
studio 347
Practice
Oil on Copper



Darrell George
studio 242
Untitled 2014 (Detail)
Oil on Canvas



Kim Hogan
studio 350
Painted Elephants
Mosaic



Andrew Kish III
studio 343
Serfdom in the Age of Insolency
Watercolor



Angie Snyder Lande

studio 255

Splendor in the Sky

Oil on Panel

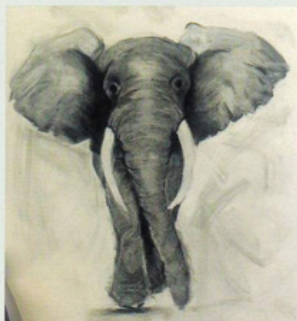


Jeffery Ludwig

studio 249

Fractured Spiral VII

Watercolor on Paper with Tacks



Trisha Mae Samuel

studio 346

Red Species

Charcoal on Paper



Liz Magno

studio 218

Drawn to Music #4

Watercolor



Arianne Schnalzer

studio 245

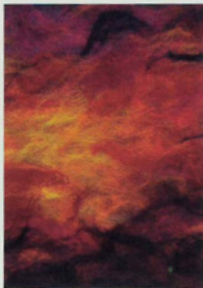
My Heart Bloomed
Watercolor on Yupo



Stephanie Smith

studio 250

Metamorphosis
Acrylic



Kimberly Tanzos

studio 244

Radiance (detail)
Merino Wool Painting



Bruce Ward

studio 350

Traveling Water Rocks People
Digital Photography



Doug Wiltraut

studio 248

Tools of the Trade
Watercolor

GROUP 2

September 20-October 26



Khalil Allaik

studio 342
Inner Guidance
Wood Sculptures



Lara Bly Allaik

studio 342
Aphrodite
Headband with Swarovski Crystals



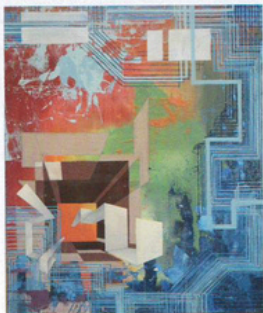
Alison Bessesdotter

studio 248 A
Elemental Inland Sea from an Angel
Acrylic on Canvas



Devyn Leonor Briggs

studio 254
Festival Deconstructed (detail)
Acrylic on Canvas



Marlow Rodale

studio 243

And then she was gone...

Oil on Canvas



Tom Shillea

studio 243

Equivalent #1

Platinum/ Palladium Prints



Deb Slahta

studio 247

Tick, Tock, Boom!

Ceramics



David Sommers

studio 345

Sailboats, San Francisco Bay

Oil on Canvas



Olaf Starorypinski

studio 233

Jasmine #7

Archival Pigment Print



**Jacqueline
Cornette**

studio 340
Poppy (detail)
Encaustic



Hong Tatt Foo

studio 253
Mysteries of the Wild Kingdom
Acrylic



Kevin Haaf

studio 351
3X3 (detail)
Copper and Wood



Valerie Breaux Haaf

studio 351
Dragonflies
Mixed Media



Octavio Peña

studio 330
Sailboat
Stained Glass

Director's Statement

This year our resident artists have split their annual exhibition in two parts. This split gives each artist extra wall space, a chance to show more work, and an opportunity to include larger works. The decision has proven to be a good one as the additional space allows more room for everyone's talents to shine. The overall feel of the gallery space is one of harmony with not only more personal space and more work per artist, but with the actual space flowing around the artwork itself. The result is an extremely dynamic exhibition from a very diverse group of artists. We extend a warm welcome to the three new resident artists in our group, Erin Anderson, Jacqueline Cornette and Devyn Leonor Briggs.

Janice Lipzin
Director of Visual Art and Education
ArtsQuest



THE
MORNING
CALL

UNCOMMON
VIGILANCE
SOUTHWESTERN ARIZONA

ServiceMASTER
Clean
By HandPro Club Cleaning

watv 88.1
COMMUNITY POWER
SOUTHWESTERN ARIZONA
EST. 1991 800.992.2411

ARTSQUEST
imagine that