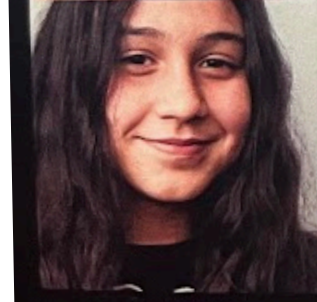


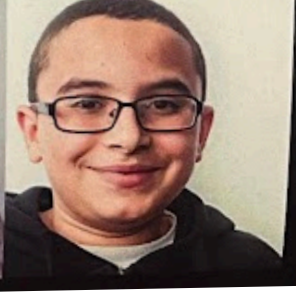
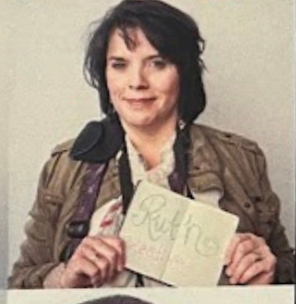
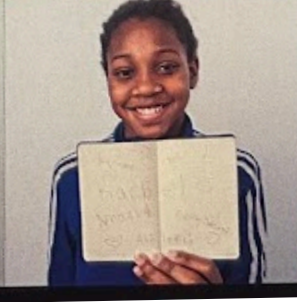
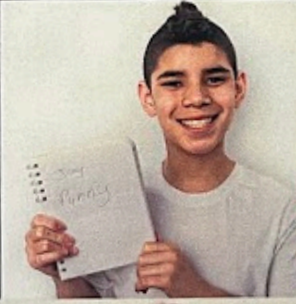
# *Faces of South Side*

Get to know the heroes of today's Bethlehem as seen through the eyes of Broughal Middle School Students in this neighborhood photography exhibit.

Banana Factory • 25 West 3rd St. Bethlehem, PA 18015



**April 23** SouthSide Arts Festival  
11am - 4pm  
•  
**May 6** First Friday  
6pm - 9pm



*Feed • Inspire • Teach • Make • Share*

The 2016 Faces of South Side program was an immersive learning experience for fifteen young photographers from Broughal Middle School. During their six weeks together after school, they were introduced to neighborhood heroes and given the tools for a new, vibrant creative venue as they used the camera to explore their subjects' identities from their own perspectives. Their guide was photographer and instructor Ryan Hulvat, assisted by his wife Dawn Moser, assistant instructor Ruth Rohrer and Justin Gifford. These professionals taught the principles of photography with state-of-the-art Olympus Digital Cameras and studio lighting in Hulvat's Studio. The students also learned about the legendary photographers and the basics of friendly, respectful interaction with their subjects during photo shoots. While capturing the Faces of the South Side, the students shared healthy meals, learned the art, history and techniques of photography, and met some truly inspiring people.

Faces of the South Side is funded and created by SteelStacks Partnership for Education & Outreach and the Banana Factory Arts Center. This program is made accessible to youth on the South Side of Bethlehem through community partnerships and individual contributions. Special thanks to instructor Ryan Hulvat, Olympus, Lexar, Rhodia Journals, Girl on the Hill Framing, Signs by Tomorrow and Elizabeth Spiewak.

# ARTS QUEST™

*Ryan Hulvat*  
PHOTOGRAPHER

**OLYMPUS®**

  
**RHODIA**



**Lexar**  
by s-a-cron

**SIGNS**  
BY TOMORROW  
ALLENTOWN