

# Banana Factory: Round 2 (6)

The Bethlehem Gadfly Banana Factory Expansion, Gadfly's posts, Serious Issues December 23, 2018  
(6th in a series of posts on Banana Factory Expansion)

*Nicole Radzievich, "Here are the newest plans for the Banana Factory expansion." December 18, 2018.*

Gadfly is aware of much interest in plans for the Banana Factory. ArtsQuest came the second time to the Historic Conservation Commission last Monday December 17. The meeting sounded quite positive to Gadfly. Still a bit uncertain seemed the question of demolition of the house that is part of the site and some concerns about the plaza.

Here are a few bullets from Nicole's above article:

- preserved: the one-story gallery on W. 3rd St.
- demolition: 1950s warehouse expansion in disrepair; non-historic garage, 19thc. home
- smaller scale than last time
- more of an industrial feel than last time
- demolition of the house at issue: lost historical character, too much to renovate and move
- need more info on plazas
- possible return in January, possible break ground in 2020

The new complex will be called the South Bethlehem Cultural Arts Center. The question of retaining the "Banana Factory" name was raised but Gadfly couldn't catch the answer. He did hear that the Fowler name will still be visible.

Gadfly video'd the meeting, but since Historical officer Jeff Long was the only one using a microphone consistently, Gadfly is only including here his opening 20-minute presentation, which concerned the new plan ArtsQuest brought and should answer some of your questions about the nature of the current plan. You will probably still have to strain to hear.

[HCC Banana Factory 12/17/18 part 1](#)

[HCC Banana Factory 12/17/18 part 2](#)

Gadfly invites comments by those better versed in things architectural than he and better attuned to possible historical district liabilities.

Here are my photos of the handout ArtsQuest brought.





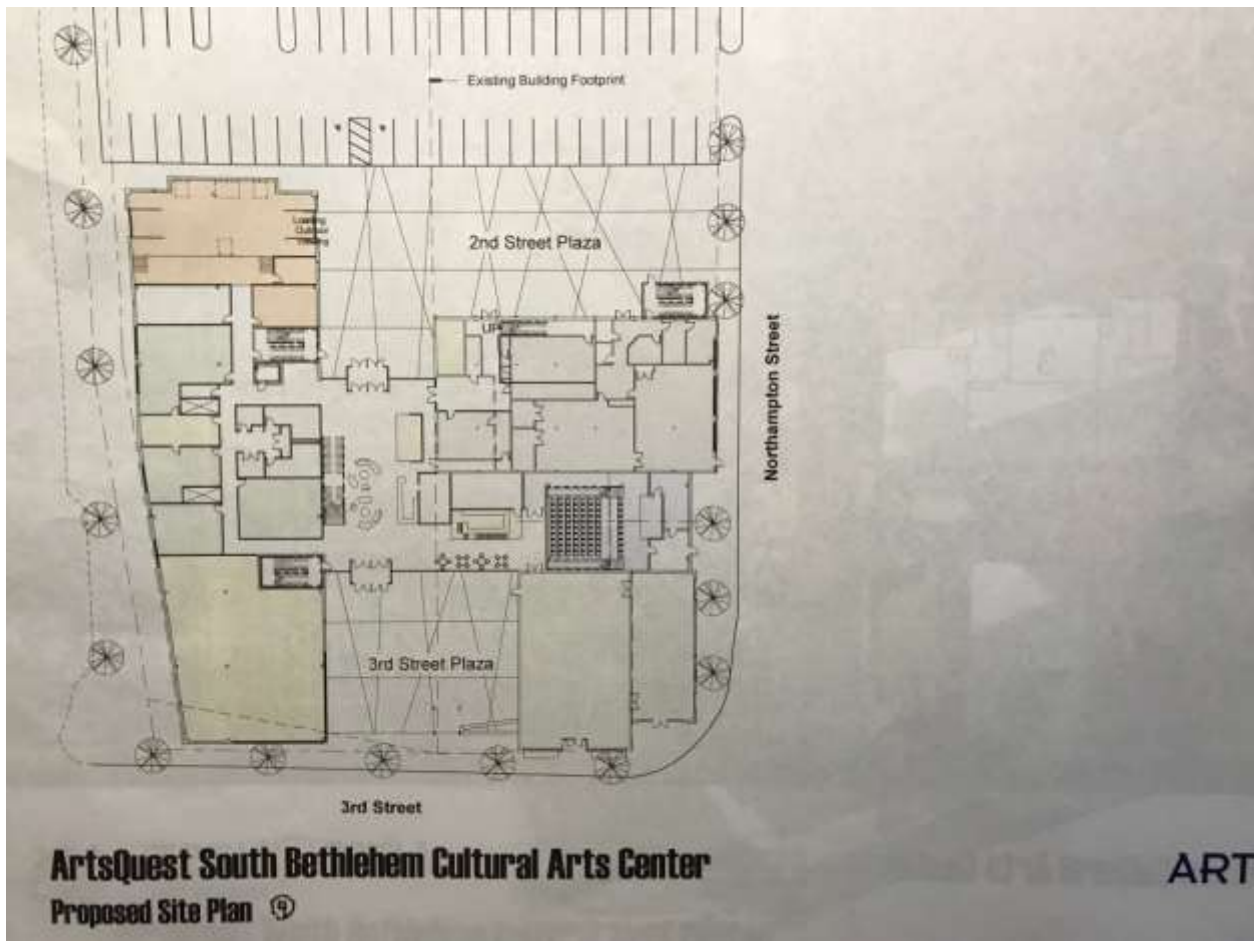
**ArtsQuest South Bethlehem Cultural Arts Center**  
Exterior Perspective - 3rd Street East  
④



# **ArtsQuest South Bethlehem Cultural Arts Center** **Demolition Site Plan**

1. Building A: The House - To Be Demolished
2. Building B: Infill - To Be Demolished
3. Building C: Theodoricks - To Be Retained
4. Building D: Banana Expansion - To Be Demolished
5. Building E: Garage - To Be Demolished
6. Building F: Auto Parts Store - To Be Retained

**ARTSQUEST**  
 image







South Bethlehem Cultural Arts Center  
View - Proposed

ARTSQU  
ima



**1** Contextual Elevation Facing South - 3rd Street  
1" = 30'-0"

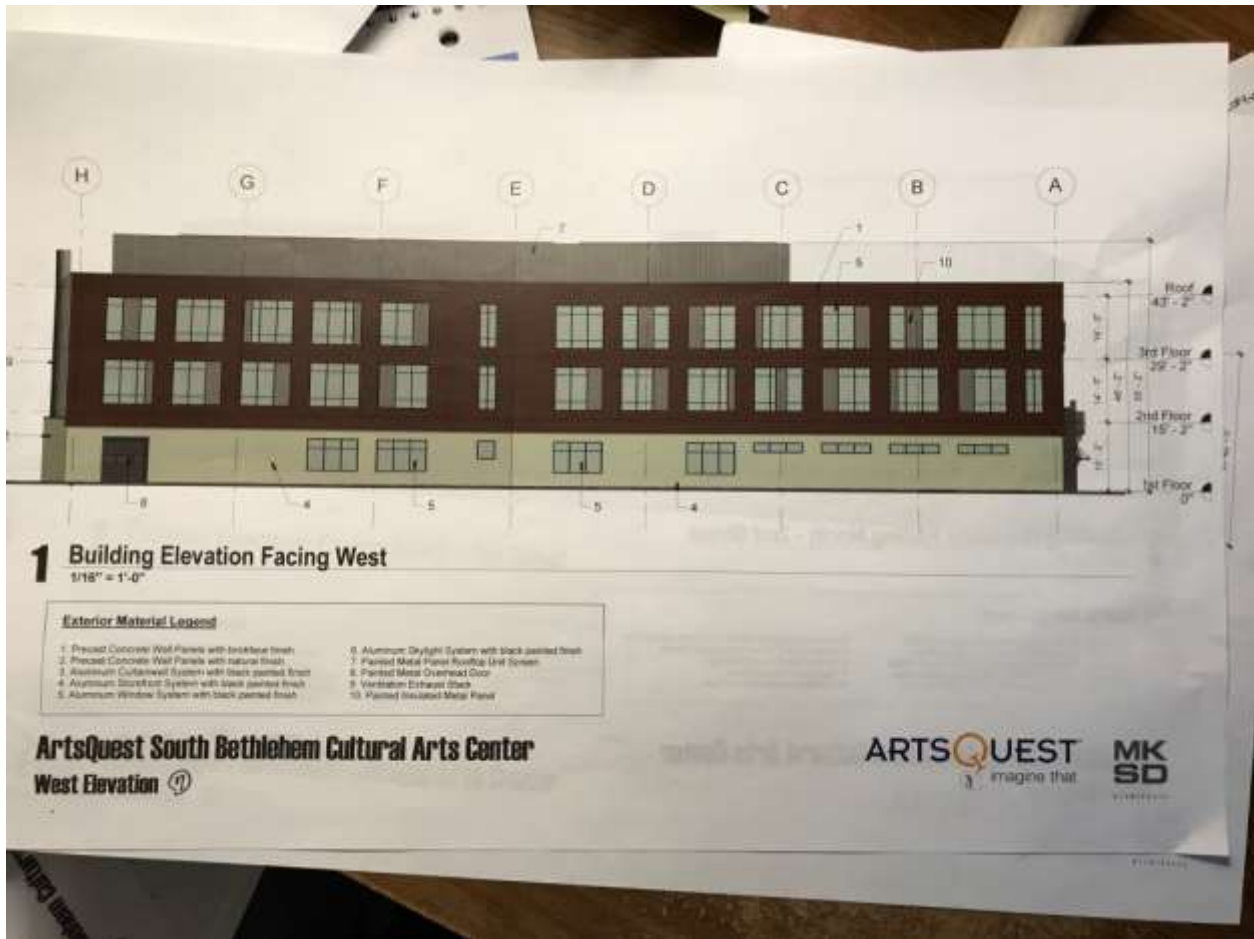


**2** Contextual Elevation Facing East - Northampton Street  
1" = 30'-0"

**ArtsQuest South Bethlehem Cultural Arts Center**  
Context Elevations ⑥

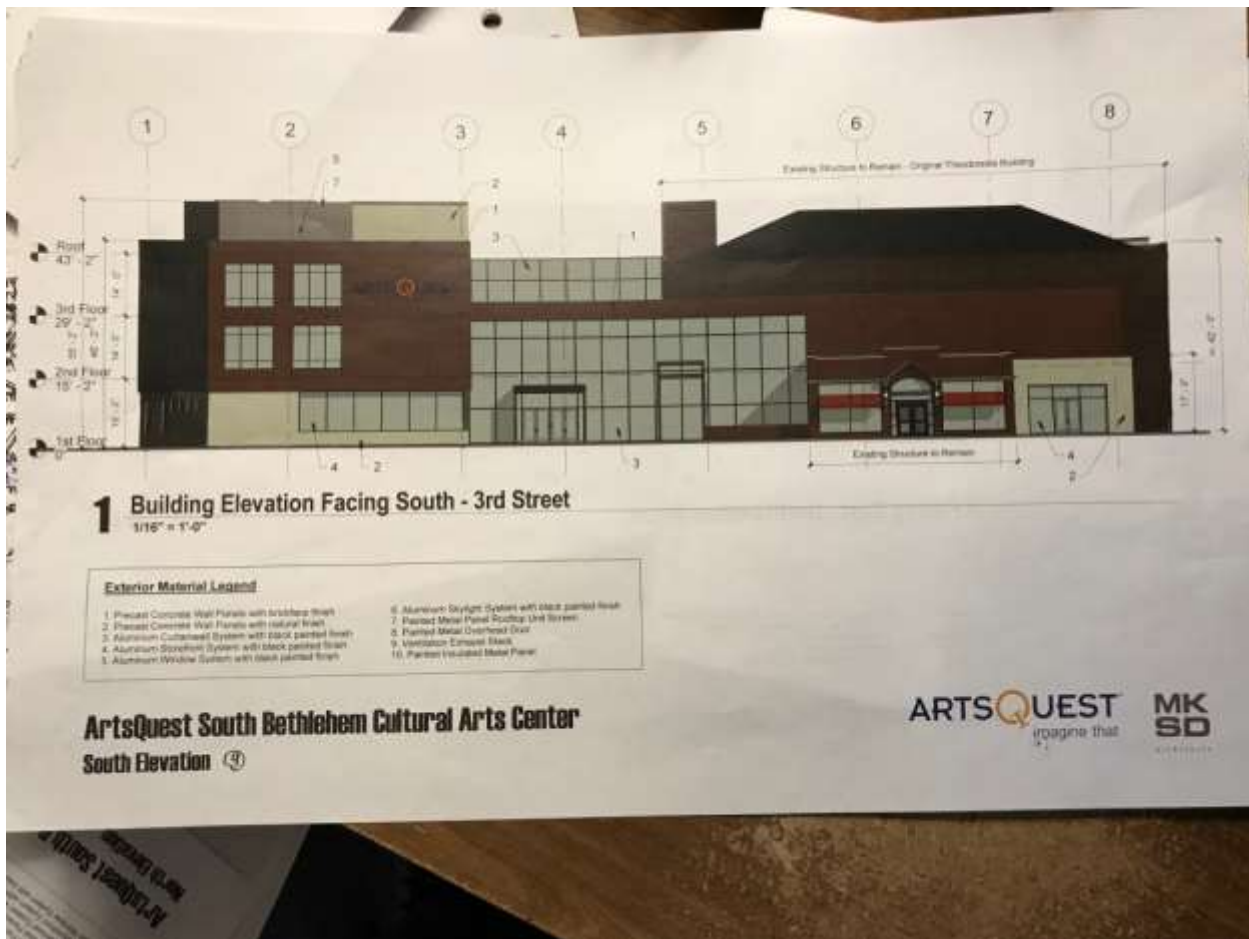
**ARTSQUEST**  
imagine that

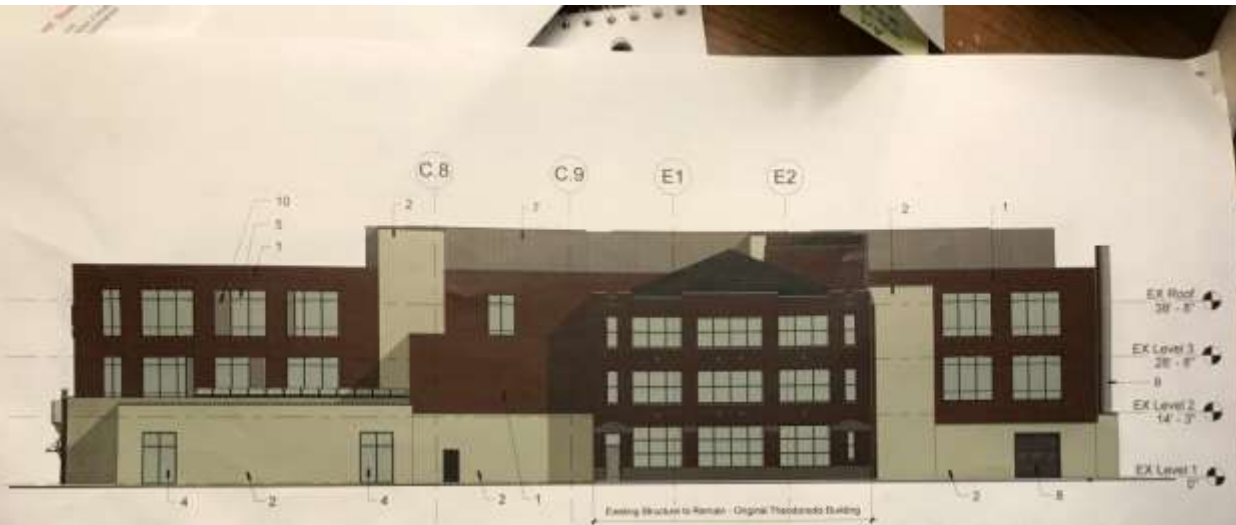
**MK  
SD**











# **1 Building Elevation Facing East - Northampton Street** 1/16" = 1'-0"

## **Exterior Material Legend:**

- |  |   |
|--|---|
| 1. Precast Concrete Wall Panels with textured finish     | 6. Aluminum Skylight System with black painted finish |
| 2. Precast Concrete Wall Panels with natural finish      | 7. Painted Metal Porch Railing and Screen             |
| 3. Aluminum Curtainwall System with black painted finish | 8. Painted Metal Overhead Door                        |
| 4. Aluminum Storefront System with black painted finish  | 9. Ventilation Exhaust Stack                          |
| 5. Aluminum Window System with black painted finish      | 10. Insulated Insulated Metal Panel                   |

**ArtsQuest South Bethlehem Cultural Arts Center**  
**East Elevation**

**ARTSQUEST**  
 imagine this

**MK**  
**SD**