

The CAP: pinpointing the problem sources, setting goals

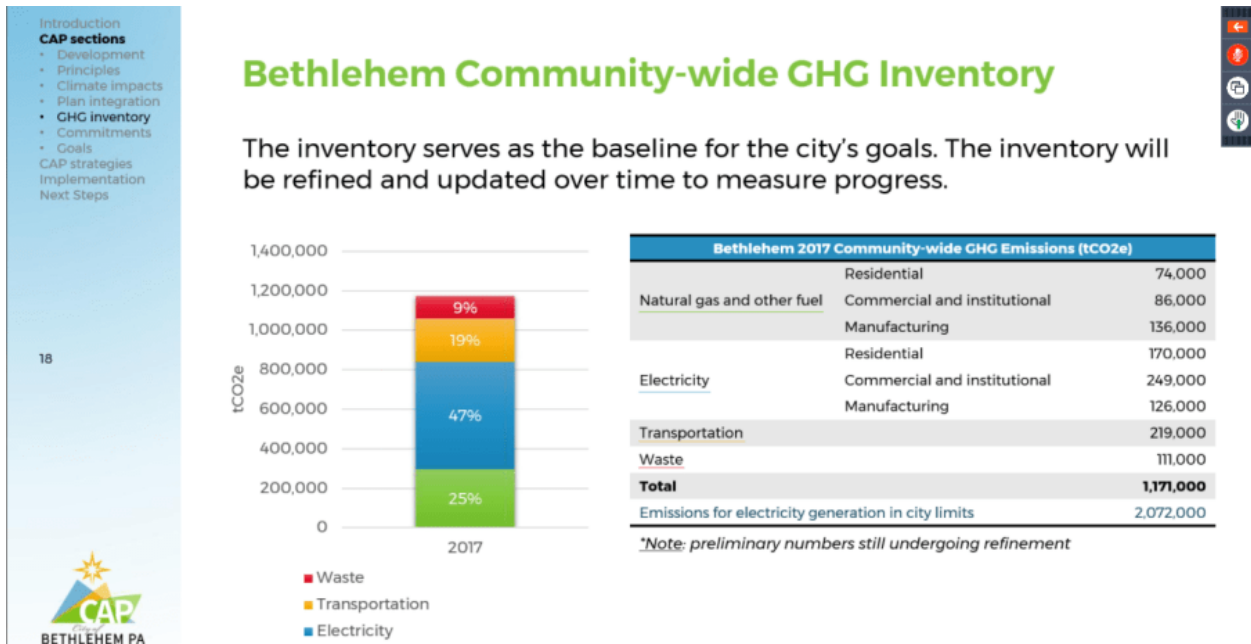
The Bethlehem Gadfly Climate Action Plan December 10, 2020

 Latest in a series on Bethlehem's Climate Action Plan 

Climate Action Plan

What contributes to Greenhouse Gas emissions in Bethlehem? Electricity is the biggest contributor.

Consultant Jeff (1 min.):



And, then, most importantly, what are our goals? What are we committing ourselves to and when? Looks pretty ambitious!

Consultant Jeff (2 mins.):

Bethlehem's proposed commitments

Target Category	Baseline	Commitments
Community-wide targets	Relative to 2017 GHG baseline:	• 33% reduction by 2025
		• 60% reduction by 2030
		• Net-zero by 2040
Municipal operations targets	Relative to 2005 GHG baseline:	• 67% reduction by 2025
		• Net zero by 2030
Environmental justice		• Establish a just and ethical long-term framework for climate action supporting equity for all Bethlehem residents
		• Ensure 40% of overall benefits resulting from City spending on implementing this CAP goes to frontline communities

20

CAP
BETHLEHEM PA

Remember that Gadfly will let you know when the draft is up on the City website to view and comment on.

The Bethlehem Gadfly