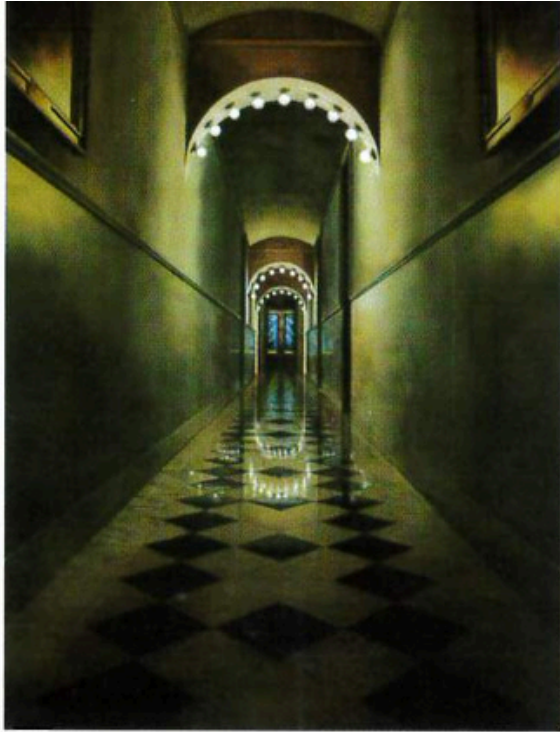


**BANANA
FACTORY**
10TH ANNIVERSARY

Artists' Annual Exhibition 2008

November 22, 2008-February 8, 2009
Crayola Gallery



Andrew Kish III • Studio 248A

Judgement, watercolor

Andrew Kish III received his bachelor's degree in painting from Kutztown University. Working in contemporary realism, Andrew strives to reveal in his paintings the magic of everyday life that we may sometimes overlook. Using watercolor and oil paints, he creates vivid and detailed paintings ranging from landscapes to figurative works. Andrew has been featured in numerous juried and invitational exhibitions, including a solo show at the Student Union Art Gallery at Kutztown University; the Emerging Visions Exhibition at YorkArts in York and the 106th Annual Philadelphia Water Color



Liz Magno • Studio 218

Berlin #2, acrylic paint and ink on Hahnemule paper

Liz Magno has been working on several series involving paintings displayed behind coordinating sculptures in a scale that relates in size to the human body. Art historical images often serve as an inspiration, but these forms are radically reinterpreted into abstract forms with a personal color palette. This requires exploring many kinds of art forms and visual elements, so she is currently on a residency in Berlin, a city with more than 200 museums, which makes it ideal for anyone interested in visual ideas. Liz also makes masks for theater and wall hung sculptures.



Ben Marcuné • Studio 350

Mauch Chunk, oil

Ben Fortunado Marcuné is a fellow of The Pennsyl Academy of Fine Arts. He is a nationally-recognized painter and sculptor. His oil paintings hang in more 400 corporate and private collections, as well as in educational institutions. Many federal officials, head of state, municipalities and military leaders have also collected his work. Local sculptures include the Wor Memorial and the Marquis de Lafayette.



Angie Snyder-Lande • Studio 255

Siegfriedale Rd., oil on canvas

Angie Snyder-Lande works in oils and watercolors but also has an appreciation for drawing. She has maintained a studio at the Banana Factory for the past eight years. During that time, she has taught drawing and painting classes for Lehigh Carbon Community College, East Lake Montessori School and the Banana Factory. She has also supervised numerous mural projects throughout Bethlehem and Allentown. Angie has exhibited her work in galleries and juried shows throughout the region. Highlighted exhibits include the Allentown Art Museum, Moravian Academy, Connexions Gallery and the Rotunda at Bethlehem City Hall, to name a few.



Olaf Starorypinski • Studio 233

Nori at the Steel #9, giclée print

Photographer Olaf Starorypinski has always been fascinated with light. He has been involved in lighting design for nearly 20 years, including design companies in both the United Kingdom and the United States. Starorypinski's style has been influenced by David Bailey, Robert Mapplethorpe, Howard Schatz, Herb Ritts and Helmut Newton. Although the scope of his subjects is broad, his primary interest has always been people. His experience and knowledge of light are the primary influences in his photographic work. Using light to "sculpt" subjects, he creates images from a unique perspective.



Karen Steen • Studio 254

Dancers, colored pencil, gouache, ink, paper

"The small-scale world is an endless resource of detail and composition. It also has associations with significant meaning. Within the microcosm exist the building blocks of the universe; minute parts, systems and elaborate interconnections that organize themselves into an integrated whole. The proper placement of each part gives me the sense that there is an order, that is, a balance for the individual and how it fits into the big picture. This order feels fragile and I am uneasy about civilization destroying the balance. My detailed and delicate work calls for close examination and suggests complex, interconnected and vulnerable systems."



Ann Elizabeth Schlegel • Studio 243

Les Trois Musiciens, acrylic on stretched canvas

“In July, I had the wonderful opportunity to exhibit my ‘Jazz’ series in the Galerie des Bains Douches in Antibes, France. This exhibition coincided with the largest and oldest jazz festival in Europe, the ‘Jazz a Juan’ jazz festival in Antibes Juan-les-Pins. The beautiful Riviera with the Mediterranean Sea, white sandy beaches, cobblestone walkways, Provençal cuisine and regional wines, along with the many museums, including the Musée Matisse, Musée National Message Biblique Marc Chagall, Musée des Beaux Arts, Musée d’Art Moderne et d’Art Contemporain, and just the everyday pleasures of life in the south of France, I keep with me until I return again.”



Heather Sincavage • Studio 342

The Architect’s Daughter, black & white photo on panel, poplar, acrylic, sugar

Heather Sincavage earned her B.F.A. from the Tyler School of Art at Temple University, and her M.F.A. from the School of Art at the University of Washington. As a mixed media artist, Heather seeks to explore and question the societal expectations of female identity. She incorporates a wide range of materials into her work, including wood, fine metals, hair, fabric, plants, photography and more. Her art, which is often seen as unconventional, evokes a sense of myth and folklore.

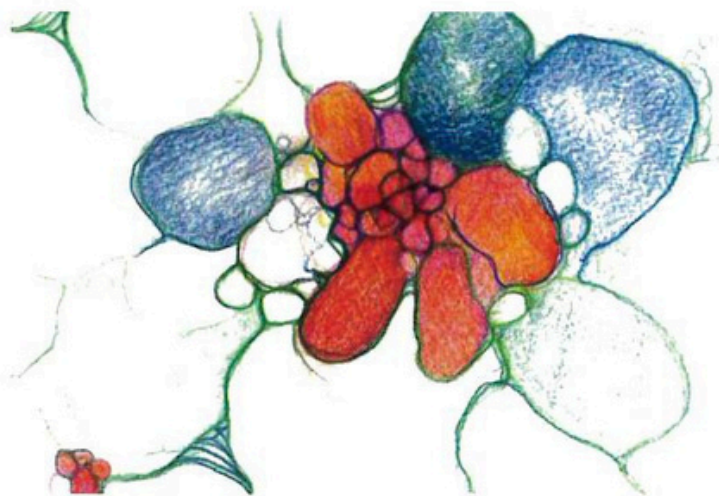


Deb Slahta • Studio 247

Large Scale Raku Tea Bowl, Raku-fired clay

Thirty plus years ago, Hellertown native Debo enrolled in a studio ceramics class while completing a bachelor’s degree in mathematics at Moravian College in Bethlehem. She has exhibited throughout Pennsylvania and the Northeast, most recently at a solo show at GoggleWorks in Reading and a regional ceramics show at the Baum School of Art in Allentown.

“My work often integrates the excitement and uncertainty of the Raku firing process and careful planned divisions of space, a three-dimensional geometrical story. Forms explode with color and contrast of black and white.”



Karla Stingerstein • Studio 245

Untitled, mixed media

Painter Karla Stingerstein graduated from Lafayette College with a bachelor's degree in American studies and also studied art history and studio art at Rutgers University. Karla works in oils, acrylics and ink. Her abstract paintings have been exhibited at Monsoon Gallery in Bethlehem, New Brunswick Artist Co-Op in New Jersey and Lafayette's Grossman Gallery. From 2000-02, she was a visiting artist at Lafayette, where she produced artwork under the mentorship of faculty and mentored students in the visual arts. Karla has also been an instructor at Lafayette, initiating the development of a community outreach program to include the senior sector.



Bruce Ward • Studio 249

Sawyer Glacier, photography

Still or motion image, Bruce Ward chronicles images and experiences. He recently worked on a video project with the residents at the Northampton Juvenile Justice Center in Easton. He has also spent time photographing ships, flora and fauna in Martha's Vineyard and Alaska. Bruce spends his spare time substitute teaching at Bethlehem Area Vocational-Technical School Academy of Video and Media Arts and teaching B-Smart programs at the Banana Factory.



Douglas Wiltraut • Studio 248

Back for a Visit, watercolor

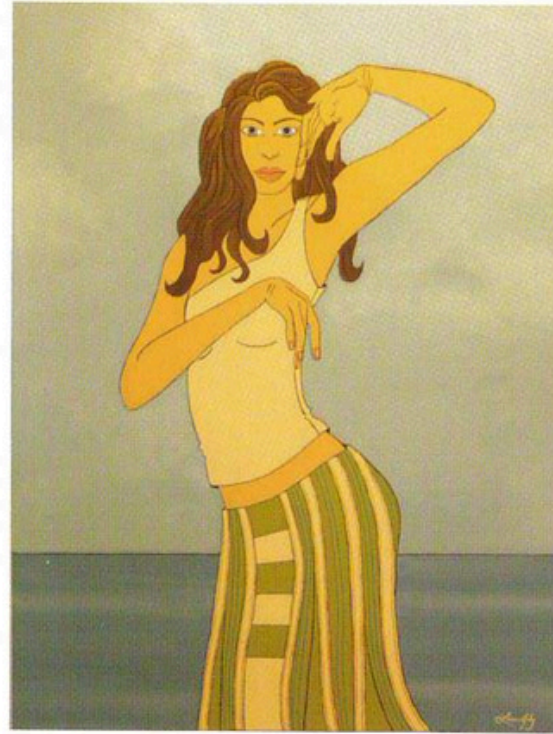
Douglas Wiltraut, one of America's foremost painters in egg tempera and dry brush watercolor, graduated from Kutztown University in 1973 with a B.F.A. in painting. The president of the National Society of Painters in Casein & Acrylic, he is the recipient of the Butler Institute of American Art Award, the Today's Art Medal, the Knickerbocker Artists Gold and Silver Medals of Honor, the Ralph Fabri Medal. In addition, he has been the subject of feature articles on egg tempera painting in American Artist and The Artist's Magazine, and he conducted the Brandywine Workshop in egg tempera painting in American Artist.



Khalil Allaik • Studio 337
BIRTH, acrylic on canvas

Khalil Allaik is a graduate of Lebanese University, where he earned fine arts degrees in both painting and drawing. Khalil is known for his vibrant, colorful abstract and mixed media art. He works with a variety of materials and techniques, and he sees the artistic process as an opportunity to think outside the box and create pieces that look deep into the thought process. Although his current work includes futuristic sculptures and paintings, his background is in classical painting.

In addition to creating artwork, Khalil worked as an interior design consultant for a Lebanese firm for eight years. His work has been shown in exhibitions and museums throughout the Middle East, as well as in Montreal and at Monsoon Gallery in Bethlehem.



Lara Bly Allaik • Studio 337
acrylic on canvas

Since graduating from American Intercontinental University in London in 1995 with a B.A. in fashion design and marketing, Lara Bly Allaik has worked as a fashion designer and illustrator in cities around the world. Living in London, Beirut, New York and Los Angeles has exposed Lara to different cultures and lifestyles, which has helped to mold her artistic skills and allowed her to create her own unique, international perspective in fashion. She does one-of-a-kind, made-to-order gowns; has had several exhibitions of fashion illustrations and handmade eveningwear; and is presently working on a new wholesale collection that will be sold in New York, Philadelphia and the Lehigh Valley.



Scott Atiyeh • Studio 242
Organ, clay, glaze, wax, epoxy, hair and tee

Born and raised in the Lehigh Valley, Scott Atiyeh received a B.F.A. in ceramics and glass from Tyler School of Art at Temple University. He then went on to earn M.F.A. in sculpture from the San Francisco Art Institute. Scott also studied at the Zhejiang Academy of Fine Arts in Hangzhou, China. He earned his teaching certificate from Kutztown University and now teaches high school art at the Salisbury Township School District.



**Marlene "Linny" Fowler/Octavio Peña
Studio 330**

Untitled, stained glass

Marlene "Linny" Fowler is a stained glass artist whose enthusiastic community involvement began in 1967 and continues today with her dedication to at-risk children, college students from low-income families and those who would benefit from arts and cultural involvement. A native of Puerto Rico, Octavio Peña came to the United States in 1959 and moved to Pennsylvania in 1976. In 1988, he met Linny and she introduced him to the art of stained glass.



Dennis Gardner • GlassWorks
Woblet, glass and acrylic plastic

Dennis Gardner graduated from Temple University's Tyler School of Art in 2005 with a B.F.A. in glass. From there, he went on to the assistantship program at the WheatonArts and Cultural Center in Millville, N.J., where he spent 18 months working with more than 20 different glass artists during their fellowships at the center. Dennis is currently the glass studio assistant at GlassWorks at the Banana Factory.



Nessa Grainger • Studio 347
Always There, acrylic on canvas

Nessa Grainger studied art at the Philadelphia M School of Art, Tyler School of Art and Pennsylvania Academy of Fine Arts, and she has exhibited through the United States and Europe.

Nessa has received medals of honor from the National Association of Women Artists, Audubon Artists of New Jersey, Garden State Watercolor, New Jersey Watercolor Society and Knickerbocker Artists, among others. She has had solo exhibitions at the Elliot Museum in Florida; Rutgers University, Warner Lambert Gallery and Somerset Center in New Jersey; and The Baum School of Art in Allentown, as well as numerous other galleries. Her work is also in the permanent collections of the Zhejiang Museum of Modern Art in China, Victoria and Albert Museum in London, the National Museum of American Art in Washington, and The Museum of Modern Art in New York.



Berrisford Boothe • Studio 343

Coliseum Habits, photo print on archival paper

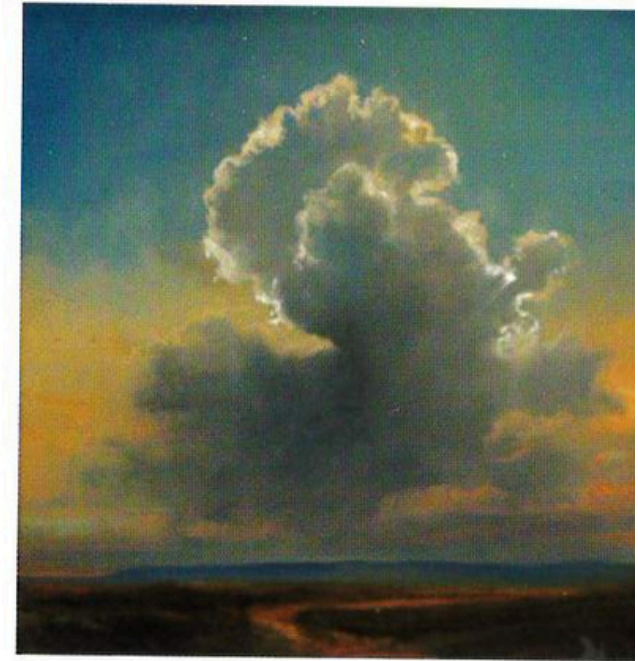
Berrisford Boothe is a painter and educator who has been a visible presence in the Eastern United States' art scene for more than 15 years. Currently associate professor of art at Lehigh University, he has carefully crafted a career as a painter, printmaker, installation artist, lecturer and curator. Berrisford is represented by the June Kelly Gallery in New York City and The Sande Webster Gallery in Philadelphia, and he has just begun presenting his early works on paper at Montanette T. Jones' MuseArt in Atlanta. He has had 10 solo exhibitions and been part of more than 60 group exhibitions nationwide.



John Choi • GlassWorks

Lizard Vase, glass and steel

A graduate of The University of the Arts in Philadelphia, John Choi has more than 10 years of experience in glass art and sculpting. John's work has been exhibited in numerous galleries and is found in private collections nationwide. He is the recipient of a Creative Glass Center of America Fellowship and has experience in Venetian glass, Swedish glass and hot glass sculpting. Currently the studio manager at GlassWorks at the Banana Factory, John has served as an instructor at Hot Soup Glass Studio in Philadelphia, Pilchuck Glass School in Washington and the Pittsburgh Glass Center in Pittsburgh.



Adriano Farinella • Studio 218A

Prayers From Underground, oil on canvas

"If the sky is a metaphor for consciousness, the clouds then represent the infinite ideas, inspirations, emotions and choices available at any moment. They are full of purpose and presence, but they are in constant motion, perpetually changing and evolving into some other and, yet, ultimately remaining themselves. They are once the beginning of things and the end of things. Impermanence serves as the path to the unnamable essence that is realized when one is truly present and simply aware of the vastness and the purpose of everything.

I am most inspired by paying attention in the present moment and to the evolution of memory and imagination. I strive to make the paintings passionate and peaceful bridges to and from memory."



Andrew Kish III • Studio 248A

Judgement, watercolor

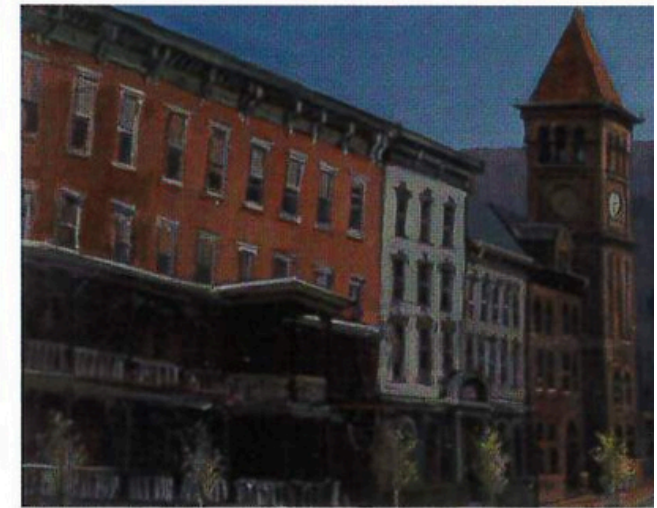
Andrew Kish III received his bachelor's degree in painting from Kutztown University. Working in contemporary realism, Andrew strives to reveal in his paintings the magic of everyday life that we may sometimes overlook. Using watercolor and oil paints, he creates vivid and detailed paintings ranging from landscapes to figurative works. Andrew has been featured in numerous juried and invitational exhibitions, including a solo show at the Student Union Art Gallery at Kutztown University; the Emerging Visions Exhibition at YorkArts in York and the 106th Annual Philadelphia Water Color Society "Works On Paper."



Liz Magno • Studio 218

Berlin #2, acrylic paint and ink on Hahnemule paper

Liz Magno has been working on several series involving paintings displayed behind coordinating sculptures in a scale that relates in size to the human body. Art historical images often serve as an inspiration, but these forms are radically reinterpreted into abstract forms with a personal color palette. This requires exploring many kinds of art forms and visual elements, so she is currently on a residency in Berlin, a city with more than 200 museums, which makes it ideal for anyone interested in visual ideas. Liz also makes masks for theater and wall hung sculptures.



Ben Marcuné • Studio 350

Mauch Chunk, oil

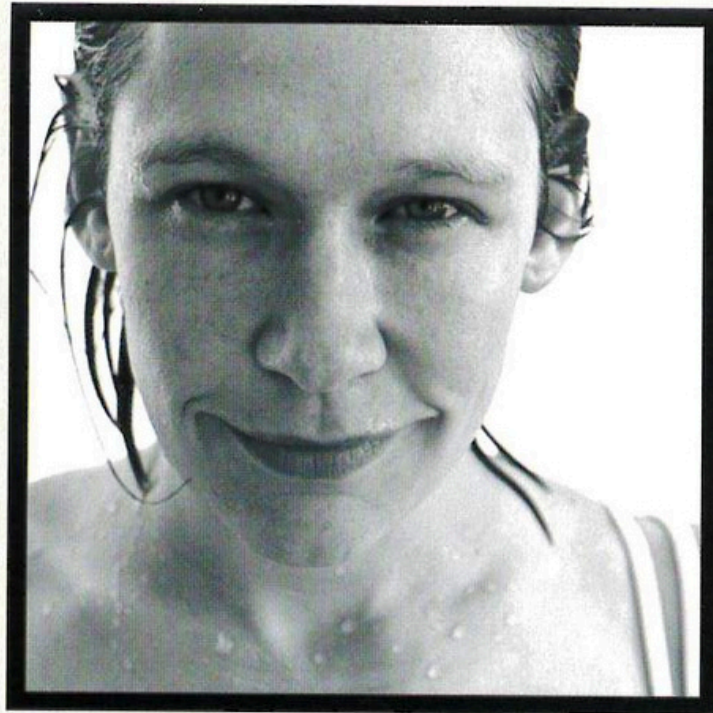
Ben Fortunado Marcuné is a fellow of The Pen Academy of Fine Arts. He is a nationally-recognized painter and sculptor. His oil paintings hang in more than 400 corporate and private collections, as well as educational institutions. Many federal officials, members of state, municipalities and military leaders have collected his work. Local sculptures include the Memorial and the Marquis de Lafayette.



Richard Holt • Studio 338

Dogwoods, photography

Richard Holt has been passionate about photography for more than 30 years. While he enjoys traveling the world and capturing images of the remote and typically inaccessible, such as he did on voyages to Antarctica, India and Africa, he is also keenly interested in helping other photographers expand their own visions, better understand the complexity of Photoshop and expedite their own workflow. Rick currently teaches digital photography and digital darkroom classes at the Banana Factory, Art Wolfe Digital Photography Center in Seattle and McDonald Digital Institute in McClure, Pa.



Ryan Hulvat • Studio 233

Detail from *family*, photographic print on canvas

Ryan Hulvat has been a professional photographer for nearly two decades, providing commercial, editorial and advertising photography for national and regional clients, including Rodale, Chesapeake Life, Lehigh Valley Style, Lehigh Valley Magazine and PPL. A graduate of the University of Dayton with a B.F.A. in photography, he has assisted with photographers in New York, Dayton and Cincinnati and studied abroad in Florence, Italy. As a photography instructor, Ryan pushes the boundaries of editorial photography, while sharing his passions for journaling and teaching digital photography to students.



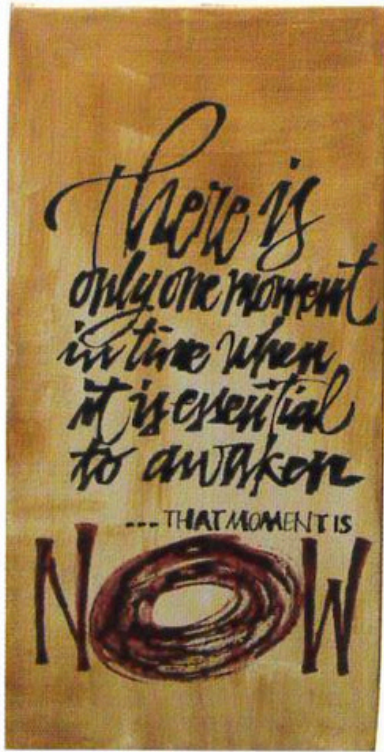
Gini Illick • Studio 250

Woman Approaching a Singularity, oil

"Retrospect is so brilliant. Feeling like a dead canard most of 2008, I realized that I was in the coal mine of financial times. I decided to climb out and reinvest. I

I read about science; I love science. I read about linguistics. I read about painting. I did yoga. 'Einstein Picasso, Space Time' by Arthur I. Miller was the catalyst I had been looking for. Picasso understood relativity, and 'Les Femmes d'Alger' was his painterly, Cubist explanation of it.

Patabi Jois, interpreter of Astanga Yoga tradition, said 'Do your yoga practice and all is coming.' Now, back in my studio, breathing clean air with a clear, newly informed mind and clean yellow feathers, I paint with joy and purpose. Namaste."



Dawn Conover Norwood • Studio 346
Prayer & Politics V, mixed media

Dawn Conover Norwood studied art at the Antonelli Institute of Art and Photography in Erdenheim, Pa., and she has extensive teaching experience at University City Arts League in Philadelphia; the Main Line Art Center, Haverford, Pa.; and The Community Art Center in Wallingford, Pa. She is a member and past board member of the Philadelphia Calligraphers' Society and has participated in many exhibitions in New York, New Jersey and Pennsylvania. Dawn lives in Bethlehem, is a member of the Pennsylvania Guild of Craftsmen and has exhibited and sold her work at Christkindlmarkt.

Rigo Peralta • Studio 340
Through the Light, mixed media

Painter/printmaker Rigo Peralta was born in the Dominican Republic and relocated to New York City in 1989. A few years ago, he moved with his wife and two young children to Allentown, where he now lives. Rigo studied painting at the Art Student League of New York and the National Academy of Fine Arts, Santiago, Dominican Republic. In 2003, he was the first Dominican artist invited by the President of the United States to visit the White House. He has won numerous awards, had solo exhibitions in New York City, and recently his work was featured at Monsoon Gallery in Bethlehem and the North Light Loft in Allentown.

Priscilla Taylor Rosenberger • Studio 25
Japanese Bowl, pastel

Priscilla Taylor Rosenberger earned her B.F.A. at Philadelphia College of Art. She is a signature member of the Pennsylvania Watercolor Society, with Sylvan Guild recognition; the Philadelphia Water Color Society and Transparent Watercolor Society of America. Her work in watercolor, pastel, oil, gouache and casein has received many awards in local, regional and national competitions and is represented in three North Light publications.

The Banana Factory's heart and soul is its resident artists. This show is an intimate dialog that we look forward to exhibiting every year. It's exciting to see all the new work and how it relates to the group within the galleries' walls.

I was recently diagnosed with breast cancer, and I choose to use love and laughter as medicine. The artists joined me in a celebration in the gallery; we partied with great food and pink desserts. I cannot begin to place a value on the concern, prayers and support of the 28 wonderful and creative people who make up the Banana Factory artists. Their work has taken on new meaning for me; I view their art as a healing power symbolizing vibrant life. I feel better when I am here surrounded by art, and I thank them for their gift of hope and creativity.

~ Janice Lipzin
Director of Visual Arts and Education
Banana Factory

BANANA FACTORY

10TH ANNIVERSARY

25 W. Third St., Bethlehem, PA 18015
610-332-1300 • www.bananafactory.org

2008 Crayola Gallery shows underwritten by:

CORNER
STONE 

2008 Banko Family Room Gallery shows underwritten by:

ServiceMASTER
Clean
by Round the Clock Cleaning

2008 Gallery Media Sponsor:

THE MORNING CALL
the.morningcall.com

Banana Factory mission:

"To kindle, support and celebrate the artistic, cultural and creative spirit of the Lehigh Valley"

Gallery exhibitions made possible by support from Christkindlmarkt Bethlehem and the Pennsylvania Council on the Arts.

Design: Angel Gable

Arts Qu

PENNSYLVANIA
COUNCIL ON
THE ARTS

