

ArtsQuest Annual Resident Artists' Exhibition

2015

Group 1 | August 10 - September 14 | Reception September 4

Group 2 | September 14-October 26 | Reception October 2

Crayola Gallery | Banana Factory

25 W. Third St. | Bethlehem, PA

Receptions: September 4 & October 2 | 6-9 PM

GROUP 1

August 10 - September 14



Khalil Allaik
studio 342
The Visible Void 2014-2014
Cherry Wood with White Patina



Lara Bly Allaik
studio 342
Eveningwear from the Lara Bly Collection
Rayon Jersey Blend with Swarovski Crystals



Erin Anderson
studio 347
Emanation
Oil on Copper



Kimberly Tanzos
studio 244
Radiance IV
Wet Felted Merino Wool



Anthony Smith, Jr.
studio 245
Pilot #4
Mixed Media Painting

GROUP 2

September 14-October 26



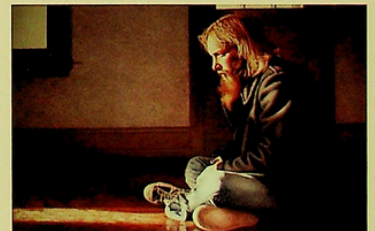
Virginia Abbott
studio 337
Carl on Site
Mixed Media



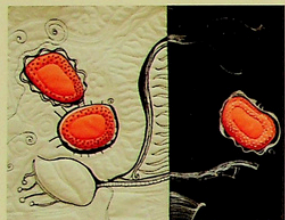
Valerie Breaux Haaf
studio 251
Bug's House
Mixed Media



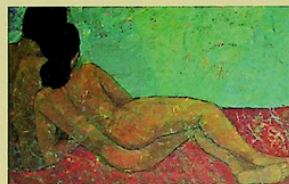
Bruce Ward
studio 350
Larry Neff
Digital Photography



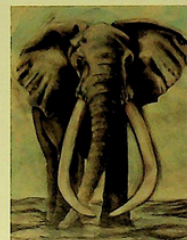
Douglas Wiltraut
studio 248
Mourning Dove
Acrylic



Allison Bessesdotter
studio 248A
Delvarais
Cotton/Ecofelt



Devyn Briggs
studio 254
Untitled (Reclining Nude)
Acrylic and Oil Pastels on Canvas



Trisha Mae
studio 246
Satao
Watercolor and Charcoal on Paper



Deb Slahta
studio 247
Hexagon
Stoneware



Kevin Herbst Haaf
studio 351
3
Hand Forged Ring with Diamonds
and Recycled Silver and Gold



Kim Hogan
studio 350
Fertile Goddess
Mosaic



Angie Snyder Lande
studio 255
Study for the Gathering
Watercolor



David Sommers
studio 345
El Barco Misterioso
Oil



Olaf Starorypinski
studio 233
Lauren #52
Archival Pigment Print



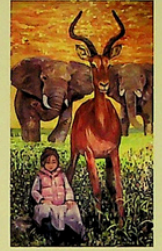
Jacqui Cornette
studio 351
Sunflowers
Encaustic and Gold Leaf



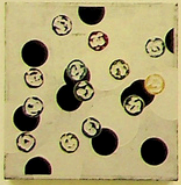
Darrell George
studio 242
Battle Axe Series: Traveler
Oil on Canvas



Andrew Kish III
studio 343
Divided We Fall
Watercolor



Christopher Kosztyo
studio 218A
Trains of Thought
Acrylic on Canvas



Jeffrey W. Ludwig-Dicus
studio 249
Untitled- Navigation Series
Acrylic on Canvas



Michelle Neifert
Forsythia
Acrylic on Canvas



Melissa Perhamus
studio 218
Blue Depths Below
Acrylic on Canvas



Marlow Rodale
studio 243
Uncharted Lands Part 3
Oil on Paint



Thomas Shillea
studio 93
Ragazzo Bello Enzo
Photography



Stephanie Smith
studio 350
Untitled
Acrylic

Director's Statement

Our resident artists have split their annual exhibition in two parts. This split gives each artist extra wall space, a chance to show more work, and an opportunity to include larger works. The decision has proven to be a good one as the additional space provides more room for everyone's talents to shine. The overall feel of the gallery space is one of harmony with not only more personal space and more work per artist, but with the actual space flowing around the artwork itself. The result is an extremely dynamic exhibition from a very diverse group of artists. We welcome you to explore the artists' works in the gallery, as well as visit them at their art studio space on the 2nd and 3rd floors of the Banana Factory.

Debra Miller
Director of Visual Arts and Education
ArtsQuest



THE
MORNING
CALL

UNCOMMON
VIGILANCE
ENTERTAINMENT RESERVE

ServiceMASTER.
Clean
by Round the Clock Cleaning

wdiy.com
888
LEHIGH VALLEY COMMUNITY FIRE STATION
P.O. BOX 10000, ALLENTOWN, PA 18106

ARTSQUEST
imagine that